

# Manhole Inspection Report



|           |                   |           |                     |                |                           |
|-----------|-------------------|-----------|---------------------|----------------|---------------------------|
| Date:     | <b>10/08/2022</b> | Weather:  |                     | Coding:        | <b>RZMACP</b>             |
| MH#:      | <b>M-1004-083</b> | Owner:    | <b>NA</b>           | Len. Surveyed: | <b>5.7</b>                |
| P.O.#:    |                   | Surveyor: | <b>Jen Costello</b> | Rim to Invert: | <b>6.7</b>                |
| Customer: |                   | Cert. #:  | <b>U-907-5518</b>   | Wall Material: | <b>Concrete (precast)</b> |

|              |   |                        |                    |
|--------------|---|------------------------|--------------------|
| Street:      | <b>Cypress Ln. 221' West of McAfee.</b> | Project:               | <b>Hobart, IN</b>  |
| City:        | <b>Hobart, IN</b>                       | GPS Northing:          | <b>2292310.161</b> |
| Location:    | <b>Other</b>                            | GPS Easting:           | <b>2914308.865</b> |
| Drain Area:  | <b>Northeast</b>                        | GPS Accuracy:          | <b>Sub-Meter</b>   |
| Cover Shape: | <b>Circular</b>                         | Evidence of Surcharge: | <b>No</b>          |
| Cover Size:  | <b>24.0</b>                             | Potential for Runoff:  | <b>None</b>        |
| Comments:    |   |                        |                    |

|                   |             |                   |             |                    |             |
|-------------------|-------------|-------------------|-------------|--------------------|-------------|
| O&M Index:        | <b>2.00</b> | O&M Quick:        | <b>2100</b> | O&M Rating:        | <b>2.00</b> |
| Structural Index: | <b>1.00</b> | Structural Quick: | <b>1600</b> | Structural Rating: | <b>6.00</b> |
| Overall Index:    | <b>1.14</b> | Overall Quick:    | <b>2116</b> | Overall Rating:    | <b>8.00</b> |

| Position  | Code | Observation                 | Video (sec) | Grade |
|---|------|-----------------------------|-------------|-------|
| <div> <div> <div>M-1004-083</div> <div> <div>Camera Direction</div> <div></div> </div> </div> <div> <div></div> <div></div> </div> </div> |      |                             |             |       |
| .0  | MGO  | General Observation         | 10          | NA    |
| .0  | SRI  | Surface Roughness Increased | 21          | S 1   |
| 2.6   | MGO  | General Observation         | 40          | NA    |
| 5.7   | DSF  | Deposits Settled Fine       | 60          | M 2   |
| 5.7   | SRI  | Surface Roughness Increased | 71          | S 1   |
| 5.7   | MGO  | General Observation         | 82          | NA    |



Code: **MGO**  
Description: **General Observation**

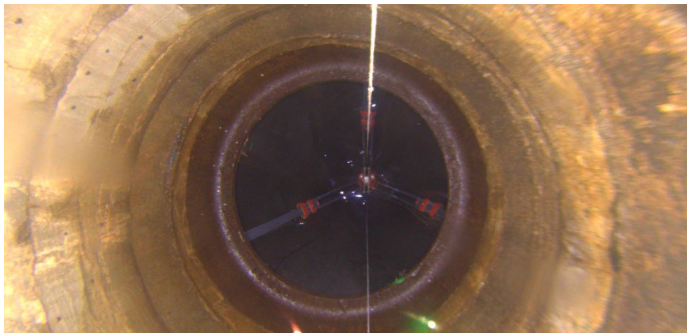
Distance (ft): **.0**  
Structural Grade: **0**  
O&M Grade: **0**  
Clock Start/From:  
Clock To:  
1st Value:  
2nd Value:  
Value Percent:  
Step: **NO**  
Remarks: **access mh**



Code: **SRI**  
Description: **Surface Roughness Increased**

Distance (ft): **.0**  
Structural Grade: **1**  
O&M Grade: **0**  
Clock Start/From: **12**  
Clock To: **12**  
1st Value:  
2nd Value:  
Value Percent:  
Step: **NO**  
Remarks:

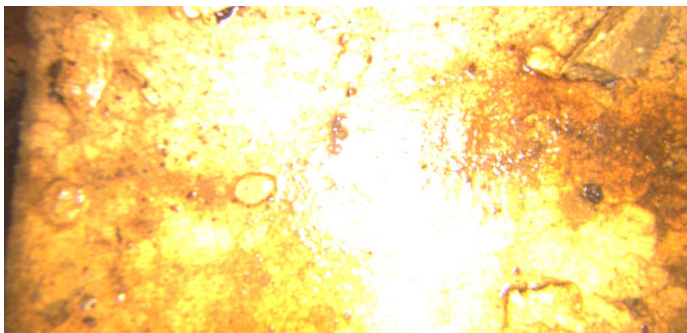
---



Code: **MGO**  
Description: **General Observation**

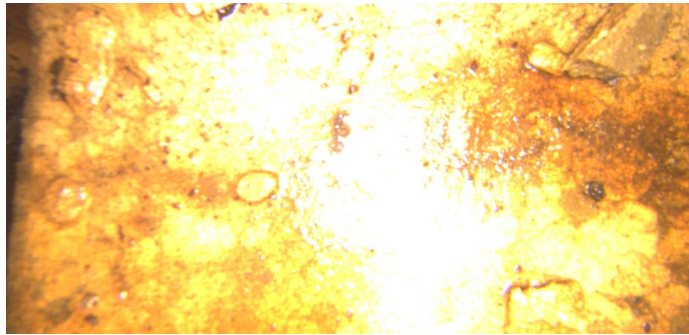
Distance (ft): **2.6**  
Structural Grade: **0**  
O&M Grade: **0**  
Clock Start/From:  
Clock To:  
1st Value:  
2nd Value:  
Value Percent:  
Step: **NO**  
Remarks: **underside of frame**

---



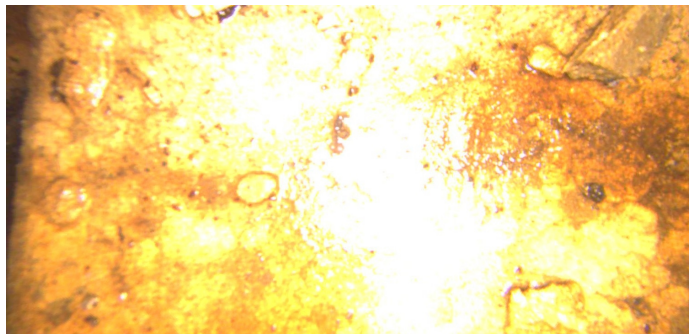
Code: **DSF**  
Description: **Deposits Settled Fine**

Distance (ft): **5.7**  
Structural Grade: **0**  
O&M Grade: **2**  
Clock Start/From: **12**  
Clock To: **12**  
1st Value:  
2nd Value:  
Value Percent: **5.000**  
Step: **NO**  
Remarks:



Code: **SRI**  
Description: **Surface Roughness Increased**

Distance (ft): **5.7**  
Structural Grade: **1**  
O&M Grade: **0**  
Clock Start/From: **12**  
Clock To: **12**  
1st Value:  
2nd Value:  
Value Percent:  
Step: **NO**  
Remarks:



Code: **MGO**  
Description: **General Observation**

Distance (ft): **5.7**  
Structural Grade: **0**  
O&M Grade: **0**  
Clock Start/From:  
Clock To:  
1st Value:  
2nd Value:  
Value Percent:  
Step: **NO**  
Remarks: **end of survey**