

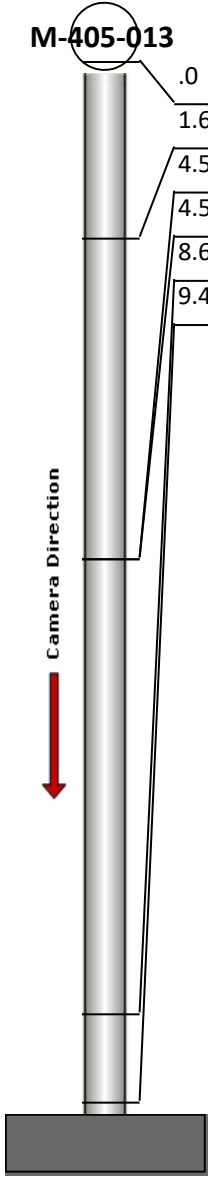
Manhole Inspection Report



| | | | | | |
|-----------|-------------------|-----------|---------------------|----------------|------------------------------|
| Date: | 04/28/2018 | Weather: | | Coding: | RZMACP |
| MH#: | M-405-013 | Owner: | NA | Len. Surveyed: | 9.4 |
| P.O.#: | | Surveyor: | Jen Costello | Rim to Invert: | 9.5 |
| Customer: | | Cert. #: | U-907-5518 | Wall Material: | Concrete (reinforced) |

| | | | |
|--------------|---|------------------------|--------------------|
| Street: | LaSalle Pl. 35' North of 3rd St. | Project: | Hobart, IN |
| City: | Hobart, IN | GPS Northing: | 2898267.367 |
| Location: | | GPS Easting: | 2898267.367 |
| Drain Area: | West | GPS Accuracy: | Sub-Meter |
| Cover Shape: | Circular | Evidence of Surcharge: | No |
| Cover Size: | 22.5 | Potential for Runoff: | None |
| Comments: | | | |

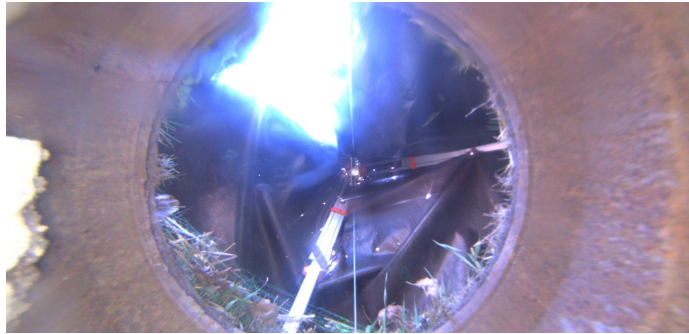
| | | | | | |
|-------------------|-------------|-------------------|-------------|--------------------|-------------|
| O&M Index: | 2.00 | O&M Quick: | 2200 | O&M Rating: | 4.00 |
| Structural Index: | 3.00 | Structural Quick: | 3100 | Structural Rating: | 3.00 |
| Overall Index: | 2.33 | Overall Quick: | 3122 | Overall Rating: | 7.00 |

| | Position | Code | Observation | Video (sec) | Grade |
|--|----------|------|---------------------------|-------------|-------|
|  | .0 | MGO | General Observation | 10 | NA |
| | 1.6 | MGP | General Photo | 27 | NA |
| | 4.5 | SAV | Surface Aggregate Visible | 46 | S 3 |
| | 4.5 | IW | Infil Weeper | 57 | M 2 |
| | 8.6 | DSZ | Deposits Settled Other | 76 | M 2 |
| | 9.4 | MGO | General Observation | 89 | NA |
| | | | | | |



Code: **MGO**
Description: **General Observation**

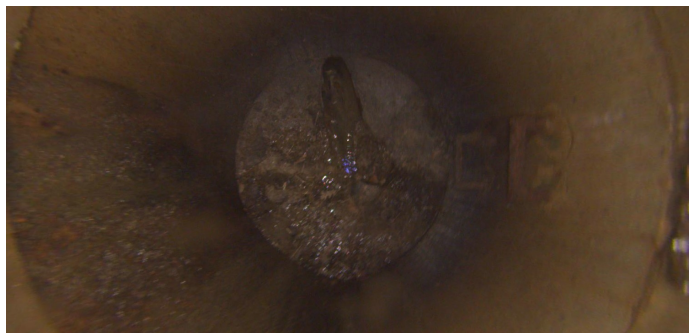
Distance (ft): **.0**
Structural Grade: **0**
O&M Grade: **0**
Clock Start/From:
Clock To:
1st Value:
2nd Value:
Value Percent:
Step: **NO**
Remarks: **ACCESS MH**



| | |
|-------------------|---------------------------|
| Code: | MGP |
| Description: | General Photo |
| Distance (ft): | 1.6 |
| Structural Grade: | 0 |
| O&M Grade: | 0 |
| Clock Start/From: | |
| Clock To: | |
| 1st Value: | |
| 2nd Value: | |
| Value Percent: | |
| Step: | NO |
| Remarks: | UNDERSIDE OF FRAME |



| | |
|-------------------|----------------------------------|
| Code: | SAV |
| Description: | Surface Aggregate Visible |
| Distance (ft): | 4.5 |
| Structural Grade: | 3 |
| O&M Grade: | 0 |
| Clock Start/From: | 6 |
| Clock To: | 9 |
| 1st Value: | |
| 2nd Value: | |
| Value Percent: | |
| Step: | NO |
| Remarks: | |



| | |
|-------------------|---------------------|
| Code: | IW |
| Description: | Infil Weeper |
| Distance (ft): | 4.5 |
| Structural Grade: | 0 |
| O&M Grade: | 2 |
| Clock Start/From: | 6 |
| Clock To: | 9 |
| 1st Value: | |
| 2nd Value: | |
| Value Percent: | |
| Step: | NO |
| Remarks: | |



| | |
|-------------------|-------------------------------|
| Code: | DSZ |
| Description: | Deposits Settled Other |
| Distance (ft): | 8.6 |
| Structural Grade: | 0 |
| O&M Grade: | 2 |
| Clock Start/From: | 12 |
| Clock To: | 12 |
| 1st Value: | |
| 2nd Value: | |
| Value Percent: | 5.000 |
| Step: | NO |
| Remarks: | MISC |



| | |
|-------------------|----------------------------|
| Code: | MGO |
| Description: | General Observation |
| Distance (ft): | 9.4 |
| Structural Grade: | 0 |
| O&M Grade: | 0 |
| Clock Start/From: | |
| Clock To: | |
| 1st Value: | |
| 2nd Value: | |
| Value Percent: | |
| Step: | NO |
| Remarks: | END SURVEY |