

Manhole Inspection Report



| | | | | | |
|-----------|------------|-----------|--------------|----------------|--------|
| Date: | 10/09/2022 | Weather: | | Coding: | RZMACP |
| MH#: | M-504-122 | Owner: | NA | Len. Surveyed: | 9.0 |
| P.O.#: | | Surveyor: | Jen Costello | Rim to Invert: | 9.7 |
| Customer: | | Cert. #: | U-907-5518 | Wall Material: | Brick |

| | | | |
|--------------|--------------------------------------|------------------------|-------------|
| Street: | 113' East of Guyer St. 140' North of | Project: | Hobart, IN |
| City: | Hobart, IN | GPS Northing: | 2292644.483 |
| Location: | Other | GPS Easting: | 2899789.821 |
| Drain Area: | Northwest | GPS Accuracy: | Sub-Meter |
| Cover Shape: | Circular | Evidence of Surcharge: | No |
| Cover Size: | 24.0 | Potential for Runoff: | None |
| Comments: | | | |

| | | | | | |
|-------------------|------|-------------------|------|--------------------|-------|
| O&M Index: | 0.00 | O&M Quick: | 0000 | O&M Rating: | 0.00 |
| Structural Index: | 3.00 | Structural Quick: | 3900 | Structural Rating: | 27.00 |
| Overall Index: | 3.00 | Overall Quick: | 3900 | Overall Rating: | 27.00 |

| Position | Code | Observation | Video (sec) | Grade |
|--|------|------------------------------|-------------|-------|
| <div> <div> <div>M-504-122</div> <div> <div>Camera Direction</div> <div></div> </div> </div> <div> <div></div> <div></div> </div> </div> | | | | |
| .0 | MGO | General Observation | 10 | NA |
| .0 | SAV | Surface Aggregate Visible | 21 | S 3 |
| 2.3 | MGO | General Observation | 39 | NA |
| 8.3 | SAP | Surface Aggregate Projecting | 65 | S 3 |
| 8.3 | SAV | Surface Aggregate Visible | 77 | S 3 |
| 9.0 | MGO | General Observation | 90 | NA |



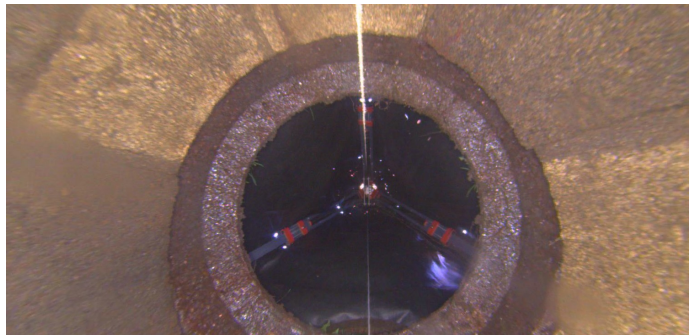
Code: **MGO**
Description: **General Observation**

Distance (ft): **.0**
Structural Grade: **0**
O&M Grade: **0**
Clock Start/From:
Clock To:
1st Value:
2nd Value:
Value Percent:
Step: **NO**
Remarks: **access mh**



Code: **SAV**
Description: **Surface Aggregate Visible**

Distance (ft): **.0**
Structural Grade: **3**
O&M Grade: **0**
Clock Start/From: **12**
Clock To: **12**
1st Value:
2nd Value:
Value Percent:
Step: **NO**
Remarks:



Code: **MGO**
Description: **General Observation**

Distance (ft): **2.3**
Structural Grade: **0**
O&M Grade: **0**
Clock Start/From:
Clock To:
1st Value:
2nd Value:
Value Percent:
Step: **NO**
Remarks: **underside of frame**



Code: **SAP**
Description: **Surface Aggregate Projecting**

Distance (ft): **8.3**
Structural Grade: **3**
O&M Grade: **0**
Clock Start/From: **12**
Clock To: **12**
1st Value:
2nd Value:
Value Percent:
Step: **NO**
Remarks:



| | |
|-------------------|----------------------------------|
| Code: | SAV |
| Description: | Surface Aggregate Visible |
| Distance (ft): | 8.3 |
| Structural Grade: | 3 |
| O&M Grade: | 0 |
| Clock Start/From: | 12 |
| Clock To: | 12 |
| 1st Value: | |
| 2nd Value: | |
| Value Percent: | |
| Step: | NO |
| Remarks: | |



| | |
|-------------------|----------------------------|
| Code: | MGO |
| Description: | General Observation |
| Distance (ft): | 9.0 |
| Structural Grade: | 0 |
| O&M Grade: | 0 |
| Clock Start/From: | |
| Clock To: | |
| 1st Value: | |
| 2nd Value: | |
| Value Percent: | |
| Step: | NO |
| Remarks: | end of survey |