

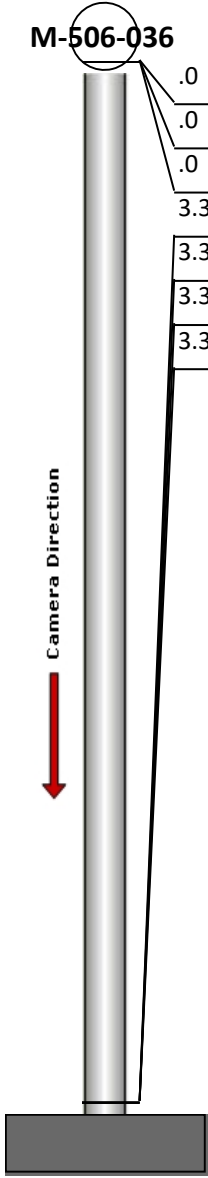
# Manhole Inspection Report



|           |                   |           |                     |                |                                 |
|-----------|-------------------|-----------|---------------------|----------------|---------------------------------|
| Date:     | <b>09/25/2022</b> | Weather:  |                     | Coding:        | <b>RZMACP</b>                   |
| MH#:      | <b>M-506-036</b>  | Owner:    | <b>NA</b>           | Len. Surveyed: | <b>3.3</b>                      |
| P.O.#:    |                   | Surveyor: | <b>Jen Costello</b> | Rim to Invert: | <b>4.1</b>                      |
| Customer: |                   | Cert. #:  | <b>U-907-5518</b>   | Wall Material: | <b>Concrete (cast in place)</b> |

|              |  |                        |                    |
|--------------|--|------------------------|--------------------|
| Street:      | <b>682' Northwest of 10th St. and Deca</b> | Project:               | <b>Hobart, IN</b>  |
| City:        | <b>Hobart, IN</b>                          | GPS Northing:          | <b>2285641.777</b> |
| Location:    | <b>Local Rural Streets</b>                 | GPS Easting:           | <b>2899574.16</b>  |
| Drain Area:  | <b>Southwest</b>                           | GPS Accuracy:          | <b>Sub-Meter</b>   |
| Cover Shape: | <b>Circular</b>                            | Evidence of Surcharge: | <b>No</b>          |
| Cover Size:  | <b>24.0</b>                                | Potential for Runoff:  | <b>None</b>        |
| Comments:    |  |                        |                    |

|                   |             |                   |             |                    |              |
|-------------------|-------------|-------------------|-------------|--------------------|--------------|
| O&M Index:        | <b>3.00</b> | O&M Quick:        | <b>5122</b> | O&M Rating:        | <b>9.00</b>  |
| Structural Index: | <b>1.00</b> | Structural Quick: | <b>1300</b> | Structural Rating: | <b>3.00</b>  |
| Overall Index:    | <b>2.00</b> | Overall Quick:    | <b>5122</b> | Overall Rating:    | <b>12.00</b> |

|  | Position | Code | Observation                 | Video (sec) | Grade |
|--|----------|------|-----------------------------|-------------|-------|
|  | .0       | MGO  | General Observation         | 10          | NA    |
|  | .0       | ISGT | Intruding Sealing Grout     | 21          | M 2   |
|  | .0       | SRI  | Surface Roughness Increased | 32          | S 1   |
|  | 3.3      | DSF  | Deposits Settled Fine       | 51          | M 2   |
|  | 3.3      | DSZ  | Deposits Settled Other      | 62          | M 5   |
|  | 3.3      | SRI  | Surface Roughness Increased | 73          | S 1   |
|  | 3.3      | MGO  | General Observation         | 84          | NA    |
|  |          |      |                             |             |       |



Code: **MGO**  
Description: **General Observation**

Distance (ft): **.0**  
Structural Grade: **0**  
O&M Grade: **0**  
Clock Start/From:  
Clock To:  
1st Value:  
2nd Value:  
Value Percent:  
Step: **NO**  
Remarks: **access mh**



|                   |                                |
|-------------------|--------------------------------|
| Code:             | <b>ISGT</b>                    |
| Description:      | <b>Intruding Sealing Grout</b> |
| Distance (ft):    | <b>.0</b>                      |
| Structural Grade: | <b>0</b>                       |
| O&M Grade:        | <b>2</b>                       |
| Clock Start/From: | <b>9</b>                       |
| Clock To:         | <b>3</b>                       |
| 1st Value:        |                                |
| 2nd Value:        |                                |
| Value Percent:    | <b>5.000</b>                   |
| Step:             | <b>NO</b>                      |
| Remarks:          |                                |

---

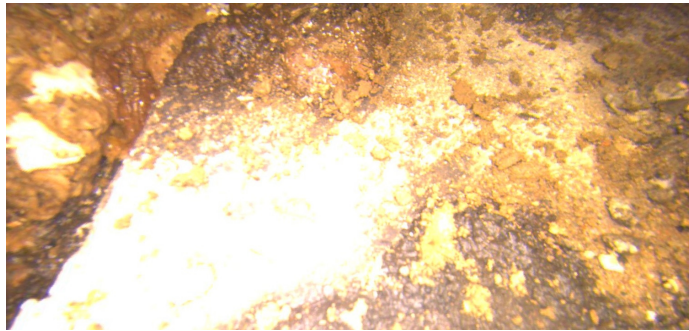


|                   |                                    |
|-------------------|------------------------------------|
| Code:             | <b>SRI</b>                         |
| Description:      | <b>Surface Roughness Increased</b> |
| Distance (ft):    | <b>.0</b>                          |
| Structural Grade: | <b>1</b>                           |
| O&M Grade:        | <b>0</b>                           |
| Clock Start/From: | <b>12</b>                          |
| Clock To:         | <b>12</b>                          |
| 1st Value:        |                                    |
| 2nd Value:        |                                    |
| Value Percent:    |                                    |
| Step:             | <b>NO</b>                          |
| Remarks:          |                                    |

---



|                   |                              |
|-------------------|------------------------------|
| Code:             | <b>DSF</b>                   |
| Description:      | <b>Deposits Settled Fine</b> |
| Distance (ft):    | <b>3.3</b>                   |
| Structural Grade: | <b>0</b>                     |
| O&M Grade:        | <b>2</b>                     |
| Clock Start/From: | <b>12</b>                    |
| Clock To:         | <b>12</b>                    |
| 1st Value:        |                              |
| 2nd Value:        |                              |
| Value Percent:    | <b>5.000</b>                 |
| Step:             | <b>NO</b>                    |
| Remarks:          |                              |



Code: **DSZ**  
Description: **Deposits Settled Other**

Distance (ft): **3.3**  
Structural Grade: **0**  
O&M Grade: **5**  
Clock Start/From: **3**  
Clock To: **9**  
1st Value:  
2nd Value:  
Value Percent: **40.000**  
Step: **NO**  
Remarks: **misc**

---



Code: **SRI**  
Description: **Surface Roughness Increased**

Distance (ft): **3.3**  
Structural Grade: **1**  
O&M Grade: **0**  
Clock Start/From: **12**  
Clock To: **12**  
1st Value:  
2nd Value:  
Value Percent:  
Step: **NO**  
Remarks:

---



Code: **MGO**  
Description: **General Observation**

Distance (ft): **3.3**  
Structural Grade: **0**  
O&M Grade: **0**  
Clock Start/From:  
Clock To:  
1st Value:  
2nd Value:  
Value Percent:  
Step: **NO**  
Remarks: **end of survey**