

Manhole Inspection Report



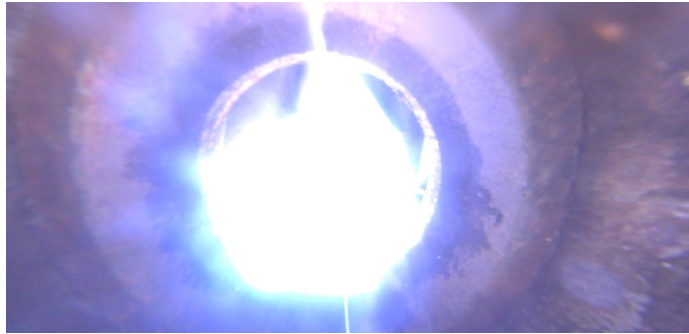
| | | | | | |
|-----------|-------------------|-----------|---------------------|----------------|------------------------------|
| Date: | 04/27/2018 | Weather: | | Coding: | RZMACP |
| MH#: | M-706-010 | Owner: | NA | Len. Surveyed: | 13.9 |
| P.O.#: | | Surveyor: | Jen Costello | Rim to Invert: | 14.2 |
| Customer: | | Cert. #: | U-907-5518 | Wall Material: | Concrete (reinforced) |

| | | | |
|--------------|--|------------------------|----------------------|
| Street: | Intersection of 8th St. and State St. | Project: | Hobart, IN |
| City: | Hobart, IN | GPS Northing: | 41.52537155 |
| Location: | | GPS Easting: | -87.2533493 |
| Drain Area: | Southeast | GPS Accuracy: | Nearest Meter |
| Cover Shape: | Circular | Evidence of Surcharge: | No |
| Cover Size: | 22.5 | Potential for Runoff: | None |
| Comments: | | | |

| | | | | | |
|-------------------|-------------|-------------------|-------------|--------------------|--------------|
| O&M Index: | 0.00 | O&M Quick: | 0000 | O&M Rating: | 0.00 |
| Structural Index: | 3.00 | Structural Quick: | 3800 | Structural Rating: | 24.00 |
| Overall Index: | 3.00 | Overall Quick: | 3800 | Overall Rating: | 24.00 |

| Position | Code | Observation | Video (sec) | Grade |
|----------|------|------------------------------|-------------|-------|
| 0.8 | MGO | General Observation | 12 | NA |
| 2.6 | MGP | General Photo | 29 | NA |
| 5.4 | SAP | Surface Aggregate Projecting | 47 | S 3 |
| 13.9 | SAP | Surface Aggregate Projecting | 76 | S 3 |
| 13.9 | MGO | General Observation | 87 | NA |

| | |
|--------------|---------------------|
| Code: | MGO |
| Description: | General Observation |



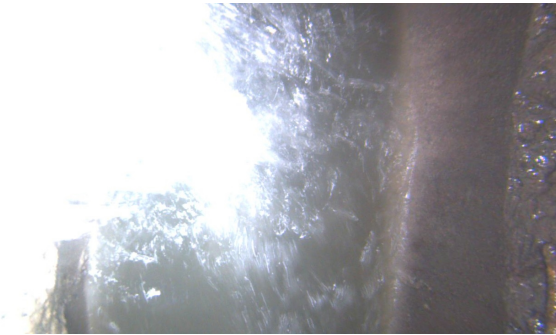
| | |
|-------------------|---------------------------|
| Code: | MGP |
| Description: | General Photo |
| Distance (ft): | 2.6 |
| Structural Grade: | 0 |
| O&M Grade: | 0 |
| Clock Start/From: | |
| Clock To: | |
| 1st Value: | |
| 2nd Value: | |
| Value Percent: | |
| Step: | NO |
| Remarks: | UNDERSIDE OF FRAME |



| | |
|-------------------|-------------------------------------|
| Code: | SAP |
| Description: | Surface Aggregate Projecting |
| Distance (ft): | 5.4 |
| Structural Grade: | 3 |
| O&M Grade: | 0 |
| Clock Start/From: | 12 |
| Clock To: | 12 |
| 1st Value: | |
| 2nd Value: | |
| Value Percent: | |
| Step: | NO |
| Remarks: | |



| | |
|-------------------|-------------------------------------|
| Code: | SAP |
| Description: | Surface Aggregate Projecting |
| Distance (ft): | 13.9 |
| Structural Grade: | 3 |
| O&M Grade: | 0 |
| Clock Start/From: | 12 |
| Clock To: | 12 |
| 1st Value: | |
| 2nd Value: | |
| Value Percent: | |
| Step: | NO |
| Remarks: | |



| | |
|-------------------|----------------------------|
| Code: | MGO |
| Description: | General Observation |
| Distance (ft): | 13.9 |
| Structural Grade: | 0 |
| O&M Grade: | 0 |
| Clock Start/From: | |
| Clock To: | |
| 1st Value: | |
| 2nd Value: | |
| Value Percent: | |
| Step: | NO |
| Remarks: | END SURVEY |