

Manhole Inspection Report



Date:	04/27/2018	Weather:		Coding:	RZMACP
MH#:	M-706-045	Owner:	NA	Len. Surveyed:	7.4
P.O.#:		Surveyor:	Jen Costello	Rim to Invert:	6.8
Customer:		Cert. #:	U-907-5518	Wall Material:	Brick

Street:	257' North of 8th St. East of Fleming	Project:	Hobart, IN
City:	Hobart, IN	GPS Northing:	41.52610397
Location:		GPS Easting:	-87.2564621
Drain Area:	South	GPS Accuracy:	Nearest Meter
Cover Shape:	Circular	Evidence of Surcharge:	No
Cover Size:	22.5	Potential for Runoff:	None
Comments:			

O&M Index:	2.00	O&M Quick:	2200	O&M Rating:	4.00
Structural Index:	0.00	Structural Quick:	0000	Structural Rating:	0.00
Overall Index:	2.00	Overall Quick:	2200	Overall Rating:	4.00

	Position	Code	Observation	Video (sec)	Grade
<div> <div> <div>M-706-045</div> <div> <div>1.0</div> <div>2.9</div> <div>2.9</div> <div>6.8</div> <div>7.3</div> </div> <div> <div>1.0</div> <div>2.9</div> <div>2.9</div> <div>6.8</div> <div>7.3</div> </div> <div> <div>General Observation</div> <div>General Observation</div> <div>Obstacle External Pipe or Cable</div> <div>Deposits Settled Fine</div> <div>General Observation</div> </div> <div> <div>12</div> <div>30</div> <div>43</div> <div>62</div> <div>75</div> </div> <div> <div>NA</div> <div>NA</div> <div>M 2</div> <div>M 2</div> <div>NA</div> </div> </div> </div>					



Code:

MGO

Description:

General Observation

Distance (ft):

1.0

Structural Grade:

0

O&M Grade:

0

Clock Start/From:

Clock To:

1st Value:

2nd Value:

Value Percent:

Step:

NO

Remarks:

ACCESS MH



Code: **MGO**
Description: **General Observation**

Distance (ft): **2.9**
Structural Grade: **0**
O&M Grade: **0**
Clock Start/From:
Clock To:
1st Value:
2nd Value:
Value Percent:
Step: **NO**
Remarks: **UNDERSIDE OF FRAME**



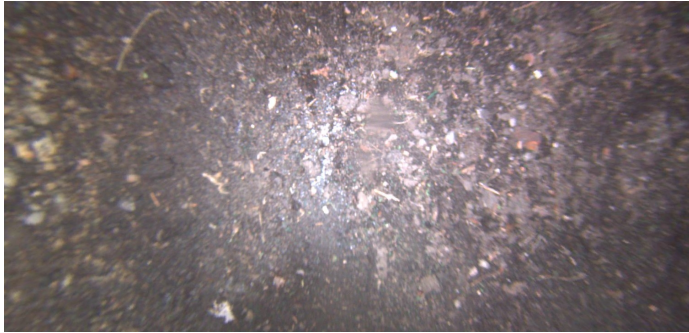
Code: **OBP**
Description: **Obstacle External Pipe or Cable**

Distance (ft): **2.9**
Structural Grade: **0**
O&M Grade: **2**
Clock Start/From: **12**
Clock To: **6**
1st Value:
2nd Value:
Value Percent: **5.000**
Step: **NO**
Remarks:



Code: **DSF**
Description: **Deposits Settled Fine**

Distance (ft): **6.8**
Structural Grade: **0**
O&M Grade: **2**
Clock Start/From: **12**
Clock To: **12**
1st Value:
2nd Value:
Value Percent: **10.000**
Step: **NO**
Remarks:



Code:	MGO
Description:	General Observation
Distance (ft):	7.3
Structural Grade:	0
O&M Grade:	0
Clock Start/From:	
Clock To:	
1st Value:	
2nd Value:	
Value Percent:	
Step:	NO
Remarks:	END SURVEY