

Manhole Inspection Report



| | | | | | |
|-----------|-------------------|-----------|------------------------|----------------|------------------------------|
| Date: | 04/09/2018 | Weather: | | Coding: | RZMACP |
| MH#: | M-808-023 | Owner: | NA | Len. Surveyed: | 7.8 |
| P.O.#: | | Surveyor: | John Kuglmaier | Rim to Invert: | 8.3 |
| Customer: | | Cert. #: | U-1215-07002349 | Wall Material: | Concrete (reinforced) |

| | | | |
|--------------|--|------------------------|--------------------|
| Street: | Union Ct. 255' Northwest of Capital | Project: | Hobart, IN |
| City: | Hobart, IN | GPS Northing: | 2907809.178 |
| Location: | | GPS Easting: | 2907809.178 |
| Drain Area: | Southwest | GPS Accuracy: | Sub-Meter |
| Cover Shape: | Circular | Evidence of Surcharge: | No |
| Cover Size: | 23.0 | Potential for Runoff: | None |
| Comments: | | | |

| | | | | | |
|-------------------|-------------|-------------------|-------------|--------------------|-------------|
| O&M Index: | 1.50 | O&M Quick: | 2111 | O&M Rating: | 3.00 |
| Structural Index: | 0.00 | Structural Quick: | 0000 | Structural Rating: | 0.00 |
| Overall Index: | 1.50 | Overall Quick: | 2111 | Overall Rating: | 3.00 |

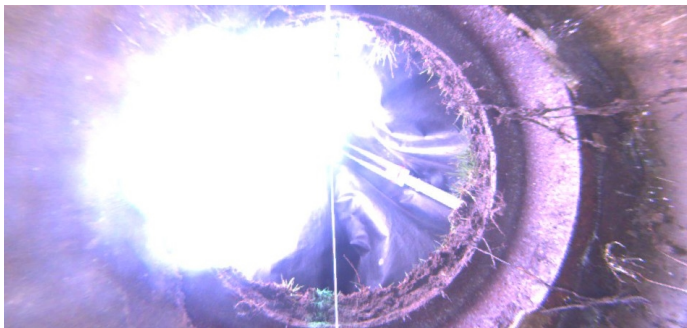
The diagram illustrates a vertical pipe with a camera mounted at the top. The camera's field of view is indicated by a red arrow pointing downwards, labeled "Camera Direction". The pipe is divided into sections by horizontal lines. A table on the right provides data for each observation point along the pipe.

| Position | Code | Observation | Video (sec) | Grade |
|-----------|------|-----------------------|-------------|-------|
| M-808-023 | | | | |
| .0 | MGP | General Photo | 10 | NA |
| .0 | RFJ | Roots Fine Joint | 22 | M 1 |
| 2.3 | MGP | General Photo | 40 | NA |
| 2.6 | IS | Infil Stain | 54 | NA |
| 4.7 | DSF | Deposits Settled Fine | 70 | M 2 |
| 6.5 | MGO | General Observation | 85 | NA |

| | |
|--------------|----------------------|
| Code: | MGP |
| Description: | General Photo |



| | |
|-------------------|-------------------------|
| Code: | RFJ |
| Description: | Roots Fine Joint |
| Distance (ft): | .0 |
| Structural Grade: | 0 |
| O&M Grade: | 1 |
| Clock Start/From: | 11 |
| Clock To: | 8 |
| 1st Value: | |
| 2nd Value: | |
| Value Percent: | |
| Step: | NO |
| Remarks: | |



| | |
|-------------------|----------------------|
| Code: | MGP |
| Description: | General Photo |
| Distance (ft): | 2.3 |
| Structural Grade: | 0 |
| O&M Grade: | 0 |
| Clock Start/From: | |
| Clock To: | |
| 1st Value: | |
| 2nd Value: | |
| Value Percent: | |
| Step: | NO |
| Remarks: | |



| | |
|-------------------|--------------------|
| Code: | IS |
| Description: | Infil Stain |
| Distance (ft): | 2.6 |
| Structural Grade: | 0 |
| O&M Grade: | 0 |
| Clock Start/From: | 2 |
| Clock To: | |
| 1st Value: | |
| 2nd Value: | |
| Value Percent: | |
| Step: | NO |
| Remarks: | |

| | |
|--------------|------------------------------|
| Code: | DSF |
| Description: | Deposits Settled Fine |



| | |
|-------------------|--------------|
| Distance (ft): | 4.7 |
| Structural Grade: | 0 |
| O&M Grade: | 2 |
| Clock Start/From: | 6 |
| Clock To: | 11 |
| 1st Value: | |
| 2nd Value: | |
| Value Percent: | 5.000 |
| Step: | NO |
| Remarks: | |

| | |
|--------------|----------------------------|
| Code: | MGO |
| Description: | General Observation |



| | |
|-------------------|-------------------|
| Distance (ft): | 6.5 |
| Structural Grade: | 0 |
| O&M Grade: | 0 |
| Clock Start/From: | |
| Clock To: | |
| 1st Value: | |
| 2nd Value: | |
| Value Percent: | |
| Step: | NO |
| Remarks: | Ins. Comp. |