

Manhole Inspection Report



| | | | | | |
|-----------|------------|-----------|--------------|----------------|-----------------------|
| Date: | 10/07/2022 | Weather: | | Coding: | RZMACP |
| MH#: | M-903-063 | Owner: | NA | Len. Surveyed: | 3.1 |
| P.O.#: | | Surveyor: | Jen Costello | Rim to Invert: | 5.2 |
| Customer: | | Cert. #: | U-907-5518 | Wall Material: | Concrete (reinforced) |

| | | | |
|--------------|-------------------------------------|------------------------|-----------------------|
| Street: | 432' South of Hwy 6. 932' West of U | Project: | 502259S9MACP26Jan2023 |
| City: | Hobart, IN | GPS Northing: | 2295277.117 |
| Location: | | GPS Easting: | 2911366.09 |
| Drain Area: | Northeast | GPS Accuracy: | Sub-Meter |
| Cover Shape: | Circular | Evidence of Surcharge: | |
| Cover Size: | 24.0 | Potential for Runoff: | |
| Comments: | | | |

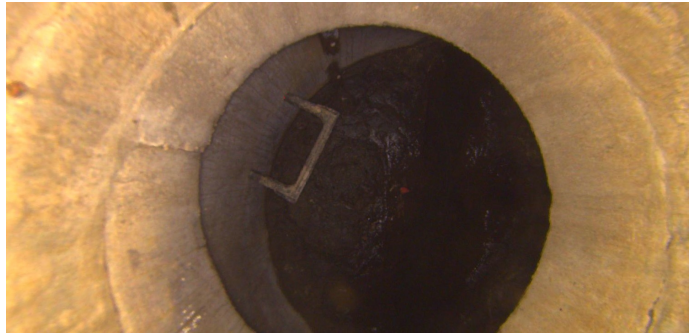
| | | | | | |
|-------------------|------|-------------------|------|--------------------|------|
| O&M Index: | 2.00 | O&M Quick: | 2100 | O&M Rating: | 2.00 |
| Structural Index: | 1.00 | Structural Quick: | 1300 | Structural Rating: | 3.00 |
| Overall Index: | 1.25 | Overall Quick: | 2113 | Overall Rating: | 5.00 |

| Position | Code | Observation | Video (sec) | Grade |
|---|------|-----------------------------|-------------|-------|
| <div> <div> <div>M-903-063</div> <div> <div>Camera Direction</div> <div></div> </div> </div> <div></div> </div> | | | | |
| .0 | MGO | General Observation | 10 | NA |
| .0 | SRI | Surface Roughness Increased | 21 | S 1 |
| 3.1 | DSF | Deposits Settled Fine | 39 | M 2 |
| 3.1 | MGO | General Observation | 50 | NA |
| 3.1 | SRI | Surface Roughness Increased | 61 | S 1 |



Code: **MGO**
Description: **General Observation**

Distance (ft): **.0**
Structural Grade: **0**
O&M Grade: **0**
Clock Start/From:
Clock To:
1st Value:
2nd Value:
Value Percent:
Step: **NO**
Remarks: **access mh**



Code: **SRI**
Description: **Surface Roughness Increased**

Distance (ft): **.0**
Structural Grade: **1**
O&M Grade: **0**
Clock Start/From: **12**
Clock To: **12**
1st Value:
2nd Value:
Value Percent:
Step: **NO**
Remarks:



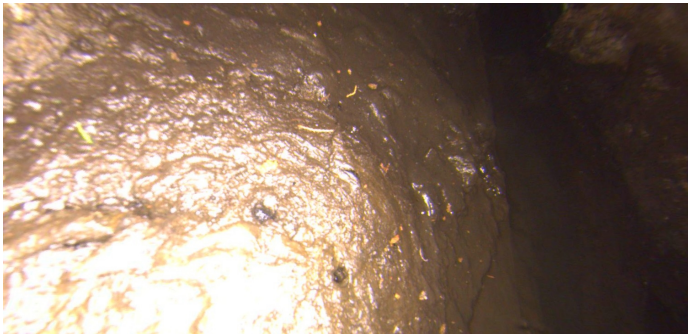
Code: **DSF**
Description: **Deposits Settled Fine**

Distance (ft): **3.1**
Structural Grade: **0**
O&M Grade: **2**
Clock Start/From: **12**
Clock To: **12**
1st Value:
2nd Value:
Value Percent: **10.000**
Step: **NO**
Remarks:



Code: **MGO**
Description: **General Observation**

Distance (ft): **3.1**
Structural Grade: **0**
O&M Grade: **0**
Clock Start/From:
Clock To:
1st Value:
2nd Value:
Value Percent:
Step: **NO**
Remarks: **end of survey**



| | |
|-------------------|------------------------------------|
| Code: | SRI |
| Description: | Surface Roughness Increased |
| Distance (ft): | 3.1 |
| Structural Grade: | 1 |
| O&M Grade: | 0 |
| Clock Start/From: | 12 |
| Clock To: | 12 |
| 1st Value: | |
| 2nd Value: | |
| Value Percent: | |
| Step: | NO |
| Remarks: | |