

# Manhole Inspection Report



Date:	<b>04/19/2018</b>	Weather:		Coding:	<b>RZMACP</b>
MH#:	<b>M-907-003</b>	Owner:	<b>NA</b>	Len. Surveyed:	<b>12.4</b>
P.O.#:		Surveyor:	<b>Jen Costello</b>	Rim to Invert:	<b>12.4</b>
Customer:		Cert. #:	<b>U-907-5518</b>	Wall Material:	<b>Concrete (reinforced)</b>

Street:	<b>On Hobart Rd. 733' South of 10th St.</b>	Project:	<b>Hobart, IN</b>
City:	<b>Hobart, IN</b>	GPS Northing:	<b>2909950.749</b>
Location:		GPS Easting:	<b>2909950.749</b>
Drain Area:	<b>Southeast</b>	GPS Accuracy:	<b>Sub-Meter</b>
Cover Shape:	<b>Circular</b>	Evidence of Surcharge:	<b>No</b>
Cover Size:	<b>22.5</b>	Potential for Runoff:	<b>None</b>
Comments:			

O&M Index:	<b>2.00</b>	O&M Quick:	<b>2100</b>	O&M Rating:	<b>2.00</b>
Structural Index:	<b>0.00</b>	Structural Quick:	<b>0000</b>	Structural Rating:	<b>0.00</b>
Overall Index:	<b>2.00</b>	Overall Quick:	<b>2100</b>	Overall Rating:	<b>2.00</b>

Position	Code	Observation	Video (sec)	Grade
<div> <div> <div>M-907-003</div> <div> <div>Camera Direction</div> <div></div> </div> </div> <div> <div></div> <div></div> </div> </div>				
.0	MGO	General Observation	10	NA
11.2	DSF	Deposits Settled Fine	44	M 2
12.4	MGO	General Observation	58	NA



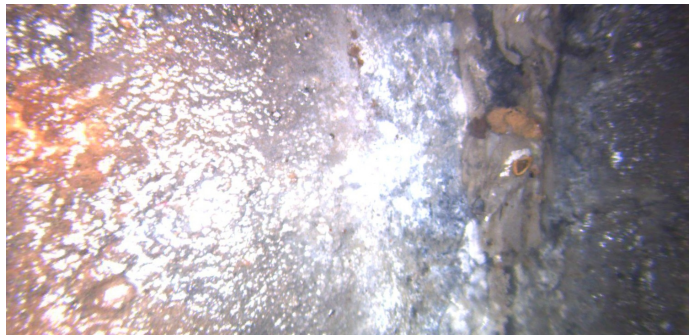
Code: **MGO**  
Description: **General Observation**

Distance (ft): **.0**  
Structural Grade: **0**  
O&M Grade: **0**  
Clock Start/From:  
Clock To:  
1st Value:  
2nd Value:  
Value Percent:  
Step: **NO**  
Remarks: **ACCESS MH**



Code:	<b>DSF</b>
Description:	<b>Deposits Settled Fine</b>
Distance (ft):	<b>11.2</b>
Structural Grade:	<b>0</b>
O&M Grade:	<b>2</b>
Clock Start/From:	<b>12</b>
Clock To:	<b>12</b>
1st Value:	
2nd Value:	
Value Percent:	<b>5.000</b>
Step:	<b>NO</b>
Remarks:	

---



Code:	<b>MGO</b>
Description:	<b>General Observation</b>
Distance (ft):	<b>12.4</b>
Structural Grade:	<b>0</b>
O&M Grade:	<b>0</b>
Clock Start/From:	
Clock To:	
1st Value:	
2nd Value:	
Value Percent:	
Step:	<b>NO</b>
Remarks:	<b>END SURVEY</b>