

Profile/Photo Observation Report



| | | | | | |
|-------------------|-------------------|-------------|------------------------|------------|----------------------|
| Date: | 03/25/2018 | Weather: | | Coding: | PACP 6.0 |
| Pipe Length (ft): | 102.0 | Owner: | NA | Pre Clean: | Not Known |
| P.O.#: | | Surveyor: | Byrd Fitzgerald | PSR: | P-203-043-042 |
| Customer: | | Clean Date: | 01/01/1900 | Shape: | C |

| | | | |
|-------------|----------------------|---------------|-----------------------|
| Street: | ALLEY BETWEEN | Flow Control: | Not Controlled |
| City: | Hobart, IN | Year Renewed: | |
| Location: | Other | Tape/Media #: | |
| Purpose: | Not Known | Dia/Height: | 10" |
| Use: | Sanitary | Material: | VCP |
| Drain Area: | NA | Lining: | |
| Category: | NA | | |
| Comment: | pump | | |

| | | | |
|-------------------|------------------|-----------------------------|-------------------|
| Location Details: | | Direction of Survey: | Downstream |
| US MH: | M-203-042 | DS MH: | M-203-043 |
| | | Total Length Surveyed (ft): | 77.6 |

| | | | | | |
|-------------------|-------------|-------------------|-------------|--------------------|-------------|
| O&M Index: | 1.00 | O&M Quick: | 1200 | O&M Rating: | 2.00 |
| Structural Index: | 0.00 | Structural Quick: | 0000 | Structural Rating: | 0.00 |
| Overall Index: | 1.00 | Overall Quick: | 1200 | Overall Rating: | 2.00 |

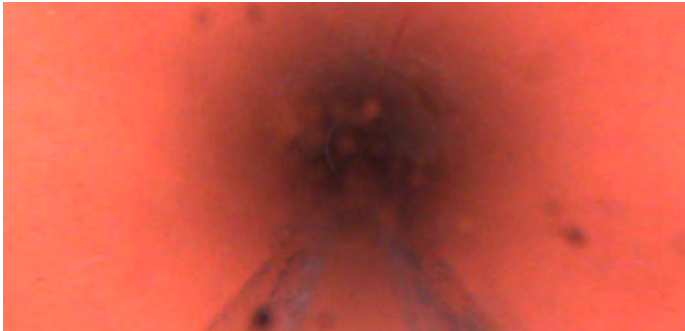
The diagram illustrates a sewer line inspection. A vertical pipe is shown with a red arrow pointing downwards, labeled "Camera Direction". The pipe is labeled with "M-203-042" at the top and "M-203-043" at the bottom. A table of observations is provided, detailing the position, code, observation, video time, and grade for various points along the pipe.

| Position | Code | Observation | Video (sec) | Grade |
|----------|------|--------------------|-------------|-------|
| .0 | AMH | Manhole | 10 | NA |
| .0 | MWL | Water Level | 21 | NA |
| 30.5 | TF | Tap Factory | 94 | NA |
| 32.4 | TF | Tap Factory | 110 | NA |
| 32.8 | RFL | Roots Fine Lateral | 122 | M 1 |
| 32.8 | RFJ | Roots Fine Joint | 133 | M 1 |
| 77.6 | AMH | Manhole | 234 | NA |

Code: **AMH**
Description: **Manhole**

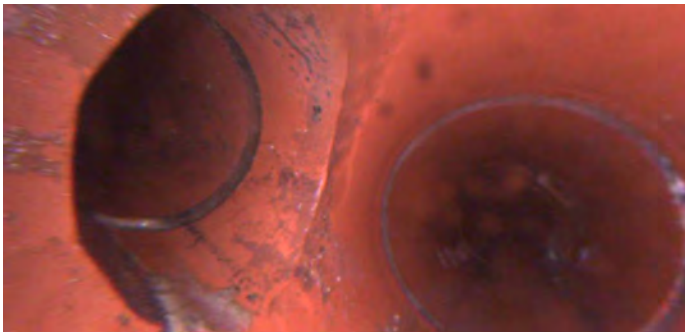


| | |
|--------------|--------------------|
| Code: | MWL |
| Description: | Water Level |



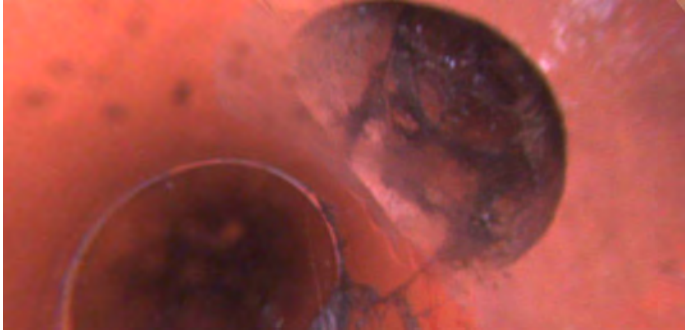
| | |
|---------------------|--------------|
| Distance (ft): | .0 |
| Structural Grade: | 0 |
| O&M Grade: | 0 |
| Clock Start/From: | |
| Clock To: | |
| 1st Value: | |
| 2nd Value: | |
| Value Percent: | 5.000 |
| Continuous Index: | |
| Within 8" of Joint: | NO |
| Remarks: | |

| | |
|--------------|--------------------|
| Code: | TF |
| Description: | Tap Factory |



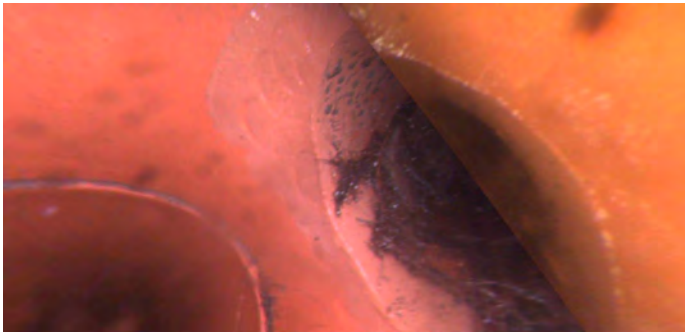
| | |
|---------------------|--------------|
| Distance (ft): | 30.5 |
| Structural Grade: | 0 |
| O&M Grade: | 0 |
| Clock Start/From: | 9 |
| Clock To: | |
| 1st Value: | 4.000 |
| 2nd Value: | |
| Value Percent: | |
| Continuous Index: | |
| Within 8" of Joint: | |
| Remarks: | |

Code: **TF**
Description: **Tap Factory**



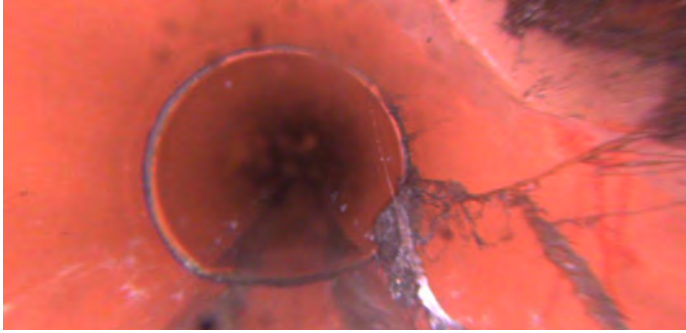
Distance (ft): **32.4**
Structural Grade: **0**
O&M Grade: **0**
Clock Start/From: **2**
Clock To:
1st Value: **4.000**
2nd Value:
Value Percent:
Continuous Index:
Within 8" of Joint:
Remarks:

Code: **RFL**
Description: **Roots Fine Lateral**



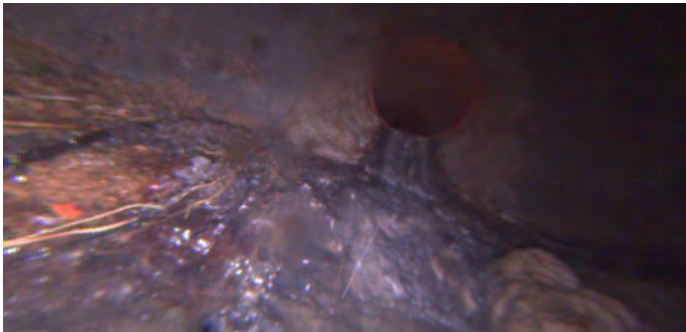
Distance (ft): **32.8**
Structural Grade: **0**
O&M Grade: **1**
Clock Start/From: **7**
Clock To: **5**
1st Value:
2nd Value:
Value Percent:
Continuous Index:
Within 8" of Joint: **NO**
Remarks:

Code: **RFJ**
Description: **Roots Fine Joint**



Distance (ft): **32.8**
Structural Grade: **0**
O&M Grade: **1**
Clock Start/From: **4**
Clock To: **5**
1st Value:
2nd Value:
Value Percent:
Continuous Index:
Within 8" of Joint: **YES**
Remarks:

Code: **AMH**
Description: **Manhole**



Distance (ft): **77.6**
Structural Grade: **0**
O&M Grade: **0**
Clock Start/From:
Clock To:
1st Value:
2nd Value:
Value Percent:
Continuous Index:
Within 8" of Joint: **NO**
Remarks: **M-203-043**