

## Profile/Photo Observation Report

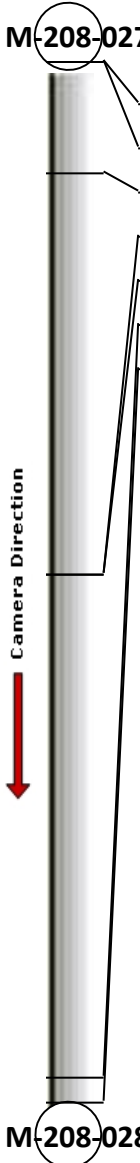



Date:	<b>03/22/2018</b>	Weather:		Coding:	<b>PACP 6.0</b>
Pipe Length (ft):	<b>273.6</b>	Owner:	<b>NA</b>	Pre Clean:	<b>No Pre-Cleaning</b>
P.O.#:		Surveyor:	<b>Selasie Honu</b>	PSR:	<b>P-208-028-027</b>
Customer:		Clean Date:	<b>01/01/1900</b>	Shape:	<b>C</b>

Street:	<b>OFF MINNESOTA ST</b>	Flow Control:	<b>Not Controlled</b>
City:	<b>Hobart, IN</b>	Year Renewed:	
Location:	<b>Light Highway</b>	Tape/Media #:	
Purpose:	<b>Routine Assessment</b>	Dia/Height:	<b>8"</b>
Use:	<b>Sanitary</b>	Material:	<b>PVC</b>
Drain Area:	<b>NA</b>	Lining:	
Category:	<b>NA</b>		
Comment:	<b>Flow direction wrong</b>		

Location Details:		Direction of Survey:	<b>Downstream</b>
US MH:	<b>M-208-027</b>	DS MH:	<b>M-208-028</b>
		Total Length Surveyed (ft):	<b>274.9</b>

O&M Index:	<b>2.00</b>	O&M Quick:	<b>2100</b>	O&M Rating:	<b>2.00</b>
Structural Index:	<b>0.00</b>	Structural Quick:	<b>0000</b>	Structural Rating:	<b>0.00</b>
Overall Index:	<b>2.00</b>	Overall Quick:	<b>2100</b>	Overall Rating:	<b>2.00</b>

	Position	Code	Observation	Video (sec)	Grade
					
	.0	AMH	Manhole	10	NA
	.0	MWL	Water Level	21	NA
	29.5	TF	Tap Factory	93	NA
	135.2	DAZ	Deposits Attached Other	318	M 2
	135.5	TFA	Tap Factory Active	332	NA
	268.1	TFA	Tap Factory Active	612	NA
	274.9	AMH	Manhole	639	NA
<div> <div> <div>Code:</div> <div>AMH</div> </div> <div> <div>Description:</div> <div>Manhole</div> </div> </div> <div>  <div> <div>Distance (ft):</div> <div>.0</div> </div> <div> <div>Structural Grade:</div> <div>0</div> </div> <div> <div>O&amp;M Grade:</div> <div>0</div> </div> <div> <div>Clock Start/From:</div> <div></div> </div> <div> <div>Clock To:</div> <div></div> </div> <div> <div>1st Value:</div> <div></div> </div> <div> <div>2nd Value:</div> <div></div> </div> <div> <div>Value Percent:</div> <div></div> </div> <div> <div>Continuous Index:</div> <div></div> </div> <div> <div>Within 8" of Joint:</div> <div>NO</div> </div> <div> <div>Remarks:</div> <div>M-208-027</div> </div> </div>					

---

Code:	<b>MWL</b>
Description:	<b>Water Level</b>



Distance (ft):	<b>.0</b>
Structural Grade:	<b>0</b>
O&M Grade:	<b>0</b>
Clock Start/From:	
Clock To:	
1st Value:	
2nd Value:	
Value Percent:	<b>5.000</b>
Continuous Index:	
Within 8" of Joint:	<b>NO</b>
Remarks:	

---

Code:	<b>TF</b>
Description:	<b>Tap Factory</b>



Distance (ft):	<b>29.5</b>
Structural Grade:	<b>0</b>
O&M Grade:	<b>0</b>
Clock Start/From:	<b>3</b>
Clock To:	
1st Value:	<b>4.000</b>
2nd Value:	
Value Percent:	
Continuous Index:	
Within 8" of Joint:	
Remarks:	

---

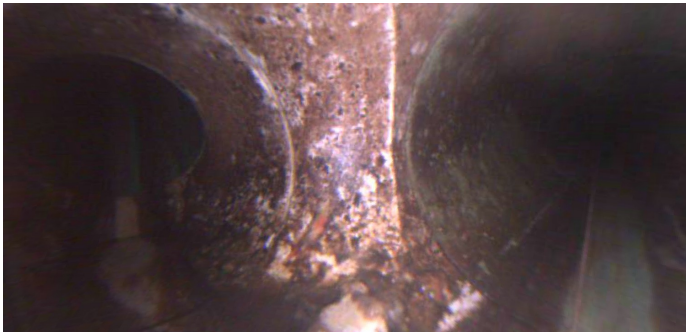
Code: **DAZ**  
Description: **Deposits Attached Other**



Distance (ft): **135.2**  
Structural Grade: **0**  
O&M Grade: **2**  
Clock Start/From: **7**  
Clock To: **9**  
1st Value:  
2nd Value:  
Value Percent: **5.000**  
Continuous Index:  
Within 8" of Joint: **YES**  
Remarks:

---

Code: **TFA**  
Description: **Tap Factory Active**



Distance (ft): **135.5**  
Structural Grade: **0**  
O&M Grade: **0**  
Clock Start/From: **3**  
Clock To:  
1st Value: **4.000**  
2nd Value:  
Value Percent:  
Continuous Index:  
Within 8" of Joint:  
Remarks:

Code: **TFA**  
Description: **Tap Factory Active**



Distance (ft): **268.1**  
Structural Grade: **0**  
O&M Grade: **0**  
Clock Start/From: **3**  
Clock To:  
1st Value: **4.000**  
2nd Value:  
Value Percent:  
Continuous Index:  
Within 8" of Joint:  
Remarks:

---

Code: **AMH**  
Description: **Manhole**



Distance (ft): **274.9**  
Structural Grade: **0**  
O&M Grade: **0**  
Clock Start/From:  
Clock To:  
1st Value:  
2nd Value:  
Value Percent:  
Continuous Index:  
Within 8" of Joint: **NO**  
Remarks: **M-208-028**