

Profile/Photo Observation Report




| | | | | | |
|-------------------|-------------------|-------------|---------------------|------------|----------------------|
| Date: | 04/16/2018 | Weather: | | Coding: | PACP 6.0 |
| Pipe Length (ft): | 237.4 | Owner: | NA | Pre Clean: | Not Known |
| P.O.#: | | Surveyor: | Selasie Honu | PSR: | P-404-018-017 |
| Customer: | | Clean Date: | 01/01/1900 | Shape: | C |

| | | | |
|-------------|-------------------------------------|---------------|-----------------------|
| Street: | W 41ST AVE & N WABASH ST | Flow Control: | Not Controlled |
| City: | Hobart, IN | Year Renewed: | |
| Location: | Light Highway | Tape/Media #: | |
| Purpose: | Not Known | Dia/Height: | 12" |
| Use: | Sanitary | Material: | VCP |
| Drain Area: | NA | Lining: | |
| Category: | NA | | |
| Comment: | | | |

| | | | |
|-------------------|------------------|-----------------------------|-------------------|
| Location Details: | | Direction of Survey: | Downstream |
| US MH: | M-404-017 | DS MH: | M-404-018 |
| | | Total Length Surveyed (ft): | 22.7 |

| | | | | | |
|-------------------|-------------|-------------------|-------------|--------------------|--------------|
| O&M Index: | 2.60 | O&M Quick: | 4222 | O&M Rating: | 13.00 |
| Structural Index: | 3.00 | Structural Quick: | 3100 | Structural Rating: | 3.00 |
| Overall Index: | 2.67 | Overall Quick: | 4231 | Overall Rating: | 16.00 |

| Position | Code | Observation | Video (sec) | Grade | |
|--|------|-------------|-----------------------|-------|-----|
| <div><div>M-404-017</div></div> | .0 | AMH | Manhole | 10 | NA |
| | .0 | MWL | Water Level | 21 | NA |
| | 7.9 | IW | Infil Weeper | 48 | M 2 |
| | 14.8 | TF | Tap Factory | 75 | NA |
| | 21.3 | FS | Fracture Spiral | 102 | S 3 |
| | 21.3 | RMB | Roots Medium Barrel | 113 | M 4 |
| | 21.4 | IR | Infil Runner | 125 | M 4 |
| | 21.8 | RFC | Roots Fine Connection | 137 | M 1 |
| | 21.8 | TFD | Tap Factory Defective | 148 | M 2 |
| | 22.7 | MSA | Abandoned Survey | 161 | NA |

Code: **AMH**
Description: **Manhole**

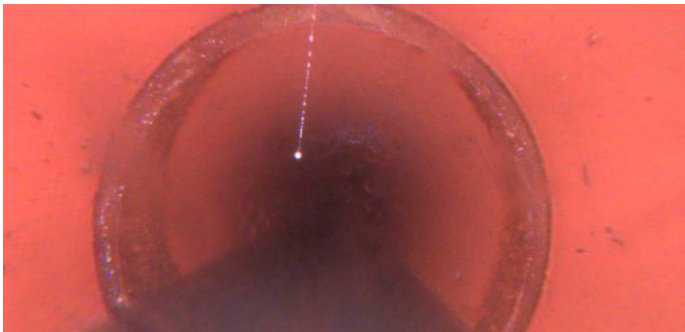
| | |
|---------------------|-----------|
| Distance (ft): | .0 |
| Structural Grade: | 0 |
| O&M Grade: | 0 |
| Clock Start/From: | |
| Clock To: | |
| 1st Value: | |
| 2nd Value: | |
| Value Percent: | |
| Continuous Index: | |
| Within 8" of Joint: | NO |
| Remarks: | M-404-017 |

| | |
|--------------|--------------------|
| Code: | MWL |
| Description: | Water Level |



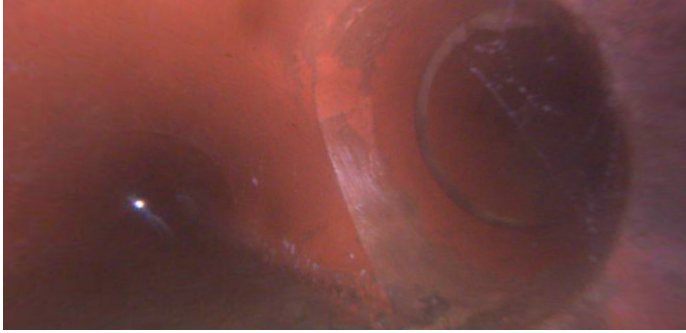
| | |
|---------------------|--------------|
| Distance (ft): | .0 |
| Structural Grade: | 0 |
| O&M Grade: | 0 |
| Clock Start/From: | |
| Clock To: | |
| 1st Value: | |
| 2nd Value: | |
| Value Percent: | 5.000 |
| Continuous Index: | |
| Within 8" of Joint: | NO |
| Remarks: | |

| | |
|--------------|---------------------|
| Code: | IW |
| Description: | Infil Weeper |



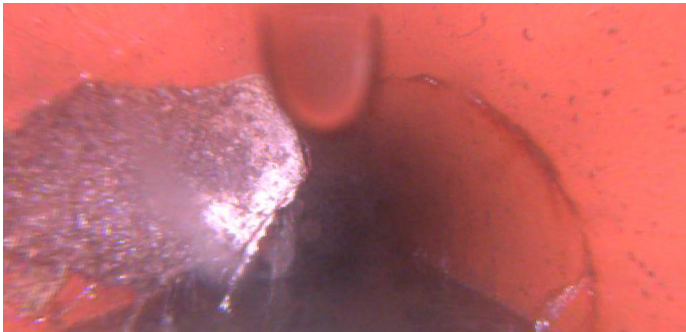
| | |
|---------------------|------------|
| Distance (ft): | 7.9 |
| Structural Grade: | 0 |
| O&M Grade: | 2 |
| Clock Start/From: | 8 |
| Clock To: | 4 |
| 1st Value: | |
| 2nd Value: | |
| Value Percent: | |
| Continuous Index: | |
| Within 8" of Joint: | YES |
| Remarks: | |

Code: **TF**
Description: **Tap Factory**



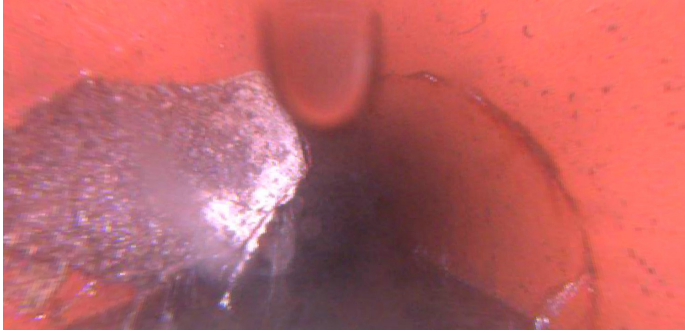
Distance (ft): **14.8**
Structural Grade: **0**
O&M Grade: **0**
Clock Start/From: **9**
Clock To:
1st Value: **4.000**
2nd Value:
Value Percent:
Continuous Index:
Within 8" of Joint:
Remarks:

Code: **FS**
Description: **Fracture Spiral**



Distance (ft): **21.3**
Structural Grade: **3**
O&M Grade: **0**
Clock Start/From: **12**
Clock To: **5**
1st Value:
2nd Value:
Value Percent:
Continuous Index:
Within 8" of Joint:
Remarks:

Code: **RMB**
Description: **Roots Medium Barrel**



Distance (ft): **21.3**
Structural Grade: **0**
O&M Grade: **4**
Clock Start/From: **7**
Clock To: **11**
1st Value:
2nd Value:
Value Percent: **15.000**
Continuous Index:
Within 8" of Joint: **NO**
Remarks:

Code: **IR**
Description: **Infil Runner**



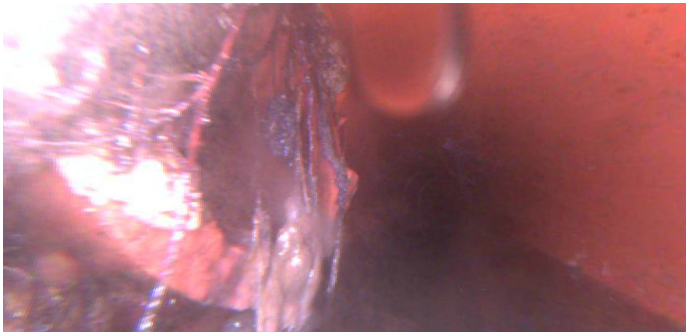
Distance (ft): **21.4**
Structural Grade: **0**
O&M Grade: **4**
Clock Start/From: **3**
Clock To:
1st Value:
2nd Value:
Value Percent:
Continuous Index:
Within 8" of Joint:
Remarks:

Code: **RFC**
Description: **Roots Fine Connection**



Distance (ft): **21.8**
Structural Grade: **0**
O&M Grade: **1**
Clock Start/From: **10**
Clock To:
1st Value:
2nd Value:
Value Percent:
Continuous Index:
Within 8" of Joint: **NO**
Remarks:

Code: **TFD**
Description: **Tap Factory Defective**



Distance (ft): **21.8**
Structural Grade: **0**
O&M Grade: **2**
Clock Start/From: **9**
Clock To:
1st Value: **4.000**
2nd Value:
Value Percent:
Continuous Index:
Within 8" of Joint:
Remarks: **ROOT INFILTRATION**



| | |
|---------------------|-------------------------|
| Code: | MSA |
| Description: | Abandoned Survey |
| Distance (ft): | 22.7 |
| Structural Grade: | 0 |
| O&M Grade: | 0 |
| Clock Start/From: | |
| Clock To: | |
| 1st Value: | |
| 2nd Value: | |
| Value Percent: | |
| Continuous Index: | |
| Within 8" of Joint: | NO |
| Remarks: | CAMERA STOPPED |