

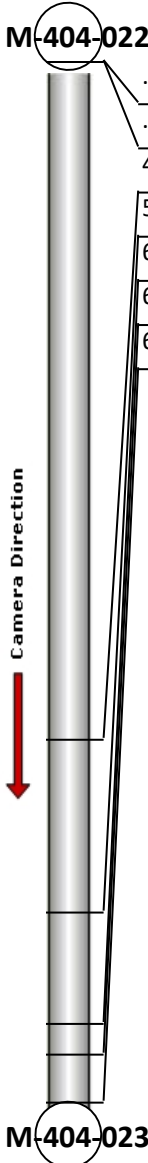
## Profile/Photo Observation Report



|                   |                       |             |                       |            |                       |
|-------------------|-----------------------|-------------|-----------------------|------------|-----------------------|
| Date:             | <b>09/04/2021</b>     | Weather:    |                       | Coding:    | <b>PACP 7.0</b>       |
| Pipe Length (ft): | <b>191.0</b>          | Owner:      | <b>City of Hobart</b> | Pre Clean: | <b>Light Cleaning</b> |
| P.O.#:            | <b>YES502259</b>      | Surveyor:   | <b>S. Bucklin</b>     | PSR:       | <b>P-404-022-023</b>  |
| Customer:         | <b>City of Hobart</b> | Clean Date: | <b>08/30/2021</b>     | Shape:     | <b>C</b>              |

|                   |                             |                             |                       |
|-------------------|-----------------------------|-----------------------------|-----------------------|
| Street:           | <b>41st Avenue</b>          | Flow Control:               | <b>Not Controlled</b> |
| City:             | <b>Hobart, IN</b>           | Year Renewed:               |                       |
| Location:         | <b>Alley</b>                | Tape/Media #:               |                       |
| Purpose:          | <b>Routine Assessment</b>   | Dia/Height:                 | <b>10"</b>            |
| Use:              | <b>Sanitary Sewage Pipe</b> | Material:                   | <b>VCP</b>            |
| Drain Area:       |                             | Lining:                     |                       |
| Category:         | <b>NA</b>                   |                             |                       |
| Comment:          |                             |                             |                       |
| Location Details: |                             | Direction of Survey:        | <b>Downstream</b>     |
| US MH:            | <b>M-404-022</b>            | DS MH:                      | <b>M-404-023</b>      |
|                   |                             | Total Length Surveyed (ft): | <b>6.6</b>            |

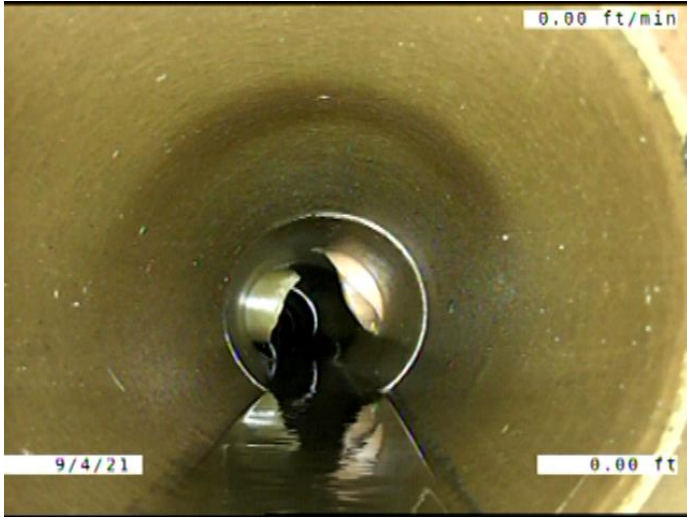
|                   |             |                   |             |                    |              |
|-------------------|-------------|-------------------|-------------|--------------------|--------------|
| O&M Index:        | <b>2.00</b> | O&M Quick:        | <b>2300</b> | O&M Rating:        | <b>6.00</b>  |
| Structural Index: | <b>4.00</b> | Structural Quick: | <b>4100</b> | Structural Rating: | <b>4.00</b>  |
| Overall Index:    | <b>2.50</b> | Overall Quick:    | <b>4123</b> | Overall Rating:    | <b>10.00</b> |

|  | Position | Code | Observation                    | Video (sec) | Grade |
|--|----------|------|--------------------------------|-------------|-------|
|  | .0       | AMH  | Manhole                        | 1           | NA    |
|  | .0       | MWL  | Miscellaneous Water Level      | 75          | NA    |
|  | 4.3      | DSF  | Deposits Settled Fine          | 131         | M 2   |
|  | 5.4      | TBI  | Tap Break-in Intruding         | 185         | M 2   |
|  | 6.1      | FM   | Fracture Multiple              | 274         | S 4   |
|  | 6.3      | TBI  | Tap Break-in Intruding         | 338         | M 2   |
|  | 6.6      | MSA  | Miscellaneous Survey Abandoned | 351         | NA    |
|  |          |      |                                |             |       |



Code: **AMH**  
Description: **Manhole**

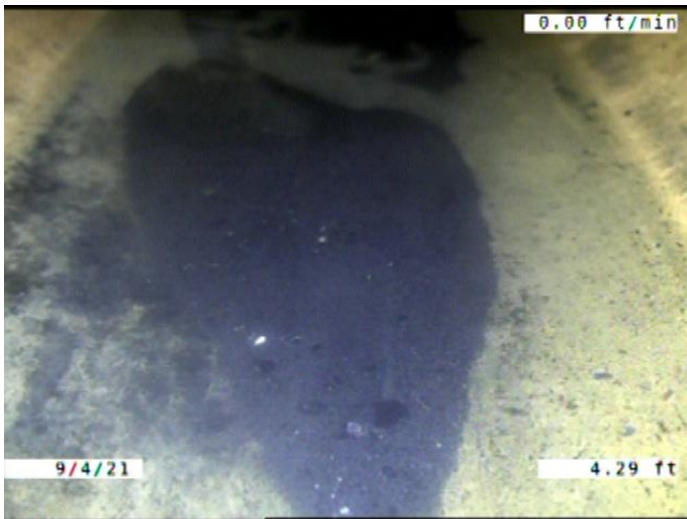
Distance (ft): **.0**  
Structural Grade: **0**  
O&M Grade: **0**  
Clock Start/From:  
Clock To:  
1st Value:  
2nd Value:  
Value Percent:  
Continuous Index:  
Within 8" of Joint: **NO**  
Remarks: **M-404-022**



---

|                     |                                  |
|---------------------|----------------------------------|
| Code:               | <b>MWL</b>                       |
| Description:        | <b>Miscellaneous Water Level</b> |
| Distance (ft):      | <b>.0</b>                        |
| Structural Grade:   | <b>0</b>                         |
| O&M Grade:          | <b>0</b>                         |
| Clock Start/From:   |                                  |
| Clock To:           |                                  |
| 1st Value:          |                                  |
| 2nd Value:          |                                  |
| Value Percent:      | <b>5.000</b>                     |
| Continuous Index:   |                                  |
| Within 8" of Joint: | <b>NO</b>                        |
| Remarks:            |                                  |

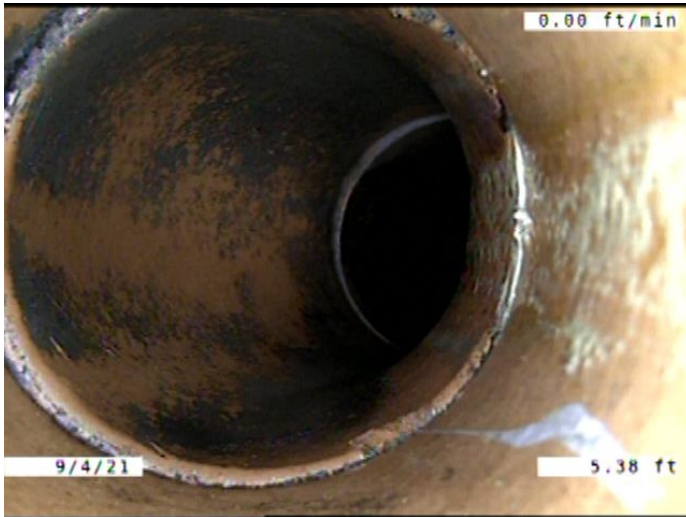
---



---

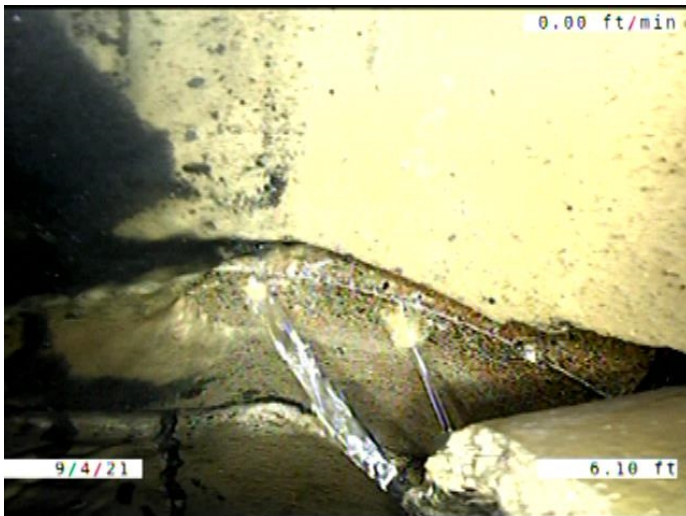
|                     |                              |
|---------------------|------------------------------|
| Code:               | <b>DSF</b>                   |
| Description:        | <b>Deposits Settled Fine</b> |
| Distance (ft):      | <b>4.3</b>                   |
| Structural Grade:   | <b>0</b>                     |
| O&M Grade:          | <b>2</b>                     |
| Clock Start/From:   | <b>6</b>                     |
| Clock To:           |                              |
| 1st Value:          |                              |
| 2nd Value:          |                              |
| Value Percent:      | <b>5.000</b>                 |
| Continuous Index:   |                              |
| Within 8" of Joint: | <b>YES</b>                   |
| Remarks:            |                              |

---



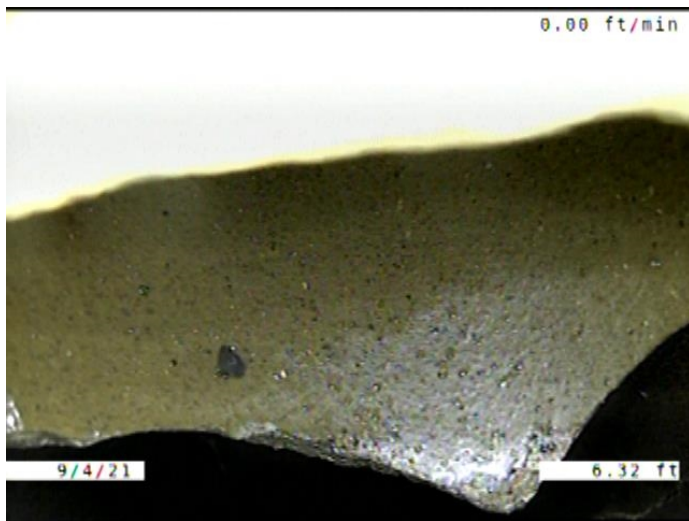
|                     |                                 |
|---------------------|---------------------------------|
| Code:               | <b>TBI</b>                      |
| Description:        | <b>Tap Break-in Intruding</b>   |
| Distance (ft):      | <b>5.4</b>                      |
| Structural Grade:   | <b>0</b>                        |
| O&M Grade:          | <b>2</b>                        |
| Clock Start/From:   | <b>2</b>                        |
| Clock To:           |                                 |
| 1st Value:          | <b>6.000</b>                    |
| 2nd Value:          | <b>1.000</b>                    |
| Value Percent:      |                                 |
| Continuous Index:   |                                 |
| Within 8" of Joint: | <b>YES</b>                      |
| Remarks:            | <b>CONSTANTLY RUNNING WATER</b> |

---



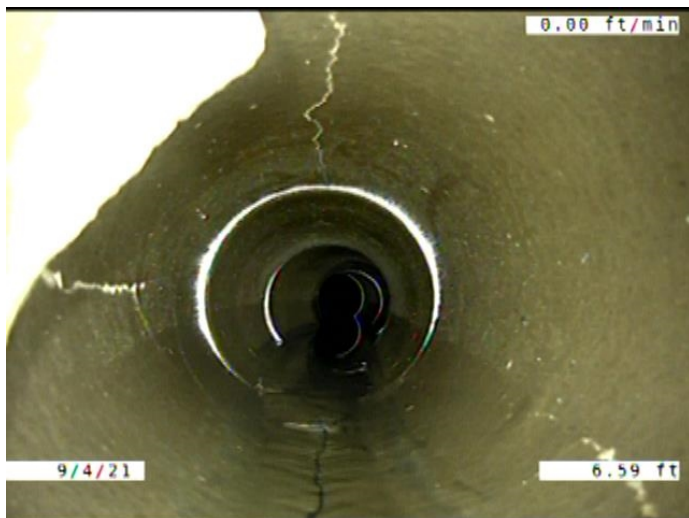
|                     |                          |
|---------------------|--------------------------|
| Code:               | <b>FM</b>                |
| Description:        | <b>Fracture Multiple</b> |
| Distance (ft):      | <b>6.1</b>               |
| Structural Grade:   | <b>4</b>                 |
| O&M Grade:          | <b>0</b>                 |
| Clock Start/From:   | <b>4</b>                 |
| Clock To:           | <b>12</b>                |
| 1st Value:          |                          |
| 2nd Value:          |                          |
| Value Percent:      |                          |
| Continuous Index:   |                          |
| Within 8" of Joint: | <b>NO</b>                |
| Remarks:            |                          |

---



Code: **TBI**  
 Description: **Tap Break-in Intruding**

Distance (ft): **6.3**  
 Structural Grade: **0**  
 O&M Grade: **2**  
 Clock Start/From: **10**  
 Clock To:  
 1st Value: **6.000**  
 2nd Value: **4.000**  
 Value Percent:  
 Continuous Index:  
 Within 8" of Joint: **YES**  
 Remarks:



Code: **MSA**  
 Description: **Miscellaneous Survey Abandoned**

Distance (ft): **6.6**  
 Structural Grade: **0**  
 O&M Grade: **0**  
 Clock Start/From:  
 Clock To:  
 1st Value:  
 2nd Value:  
 Value Percent:  
 Continuous Index:  
 Within 8" of Joint: **NO**  
 Remarks: **CAMERA CANT MAKE IT PAST PROTRUDING TAP. MADE IT TO THE**