

Profile/Photo Observation Report



Date:	08/21/2021	Weather:		Coding:	PACP 7.0
Pipe Length (ft):	329.6	Owner:	City of Hobart	Pre Clean:	Light Cleaning
P.O.#:	YES502259	Surveyor:	S. Bucklin	PSR:	P-503-078-075
Customer:	City of Hobart	Clean Date:	08/16/2021	Shape:	C

Street:	North Colorado Street	Flow Control:	Not Controlled
City:	Hobart, IN	Year Renewed:	
Location:	Local rural streets with light traffic, t	Tape/Media #:	
Purpose:	Routine Assessment	Dia/Height:	10"
Use:	Sanitary Sewage Pipe	Material:	VCP
Drain Area:		Lining:	
Category:	NA		
Comment:			
Location Details:		Direction of Survey:	Downstream
US MH:	M-503-075	DS MH:	M-503-078
		Total Length Surveyed (ft):	329.6

O&M Index:	1.26	O&M Quick:	271C	O&M Rating:	34.00
Structural Index:	2.38	Structural Quick:	4132	Structural Rating:	19.00
Overall Index:	1.51	Overall Quick:	4132	Overall Rating:	53.00

Position	Code	Observation	Video (sec)	Grade
M-503-075				
.0	AMH	Manhole	1	NA
.0	MWL	Miscellaneous Water Level	57	NA
2.9	ISJ	Infiltration Stain Joint	142	M 1
3.7	TF	Tap Factory	178	NA
9.9	ISJ	Infiltration Stain Joint	247	M 1
9.9	ISJ	Infiltration Stain Joint	263	M 1
15.6	DSF	Deposits Settled Fine	311	M 2
19.7	ISJ	Infiltration Stain Joint	378	M 1
34.5	ISJ	Infiltration Stain Joint	0	M 1
34.5	ISJ	Infiltration Stain Joint	509	M 1
45.7	ISJ	Infiltration Stain Joint	36	M 1
50.8	ISJ	Infiltration Stain Joint	92	M 1
70.7	ISJ	Infiltration Stain Joint	198	M 1
75.3	ISJ	Infiltration Stain Joint	272	M 1
80.5	ISJ	Infiltration Stain Joint	318	M 1
90.5	ISJ	Infiltration Stain Joint	381	M 1
105.7	ISJ	Infiltration Stain Joint	453	M 1
110.4	ISJ	Infiltration Stain Joint	500	M 1
115.5	ISJ	Infiltration Stain Joint	576	M 1

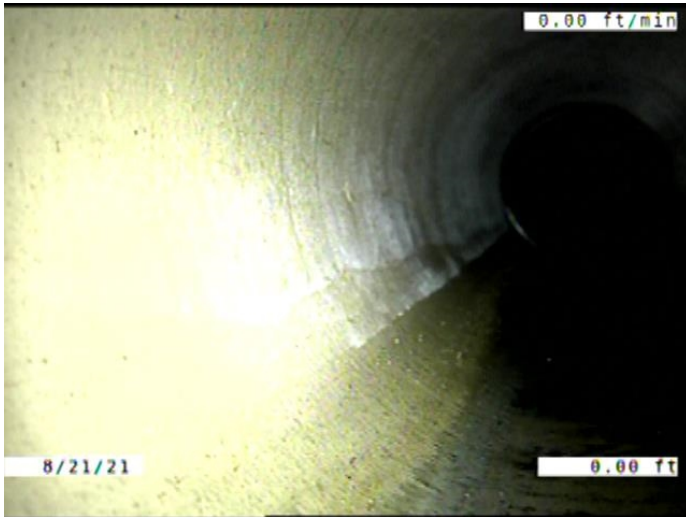
170.1	FM	Fracture Multiple	813	S 4
170.1	ISB	Infiltration Stain Barrel	842	M 1
170.6	MMC	Miscellaneous Material Change	894	NA
170.6	JSM	Joint Separated Medium	907	S 3
186.7	SSC(S01)	Surface Spalling of Damage Coating	1018	S 1
188.5	MWLS	Miscellaneous Water Level Sag	1043	S 2
188.9	DAE	Deposits Attached Encrustation	1085	M 2
188.9	MMC	Miscellaneous Material Change	1099	NA
189.9	SSC(F01)	Surface Spalling of Damage Coating	1125	S 1
209.9	TFC	Tap Factory Capped	1227	NA
216.1	JAM	Joint Angular Medium	1302	S 3
232.3	MWLS(S02)	Miscellaneous Water Level Sag	1382	S 2
235.7	DSF	Deposits Settled Fine	1410	M 2
246.3	ISJ	Infiltration Stain Joint	1479	M 1
246.3	MWLS(F02)	Miscellaneous Water Level Sag	1492	S 2
278.1	ISJ	Infiltration Stain Joint	1635	M 1
296.2	ISJ	Infiltration Stain Joint	1771	M 1
306.4	ISJ	Infiltration Stain Joint	1850	M 1
306.4	MWL	Miscellaneous Water Level	1862	NA
307.9	DSF(S03)	Deposits Settled Fine	1909	M 2
329.6	DSF(F03)	Deposits Settled Fine	2051	M 2
329.6	AMH	Manhole	2121	NA

M-503-078



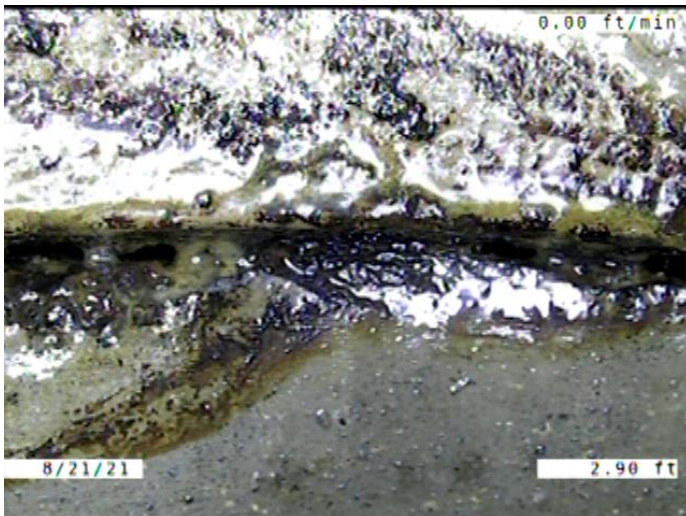
Code: **AMH**
Description: **Manhole**

Distance (ft): **.0**
Structural Grade: **0**
O&M Grade: **0**
Clock Start/From:
Clock To:
1st Value:
2nd Value:
Value Percent:
Continuous Index:
Within 8" of Joint: **NO**
Remarks: **M-503-075**



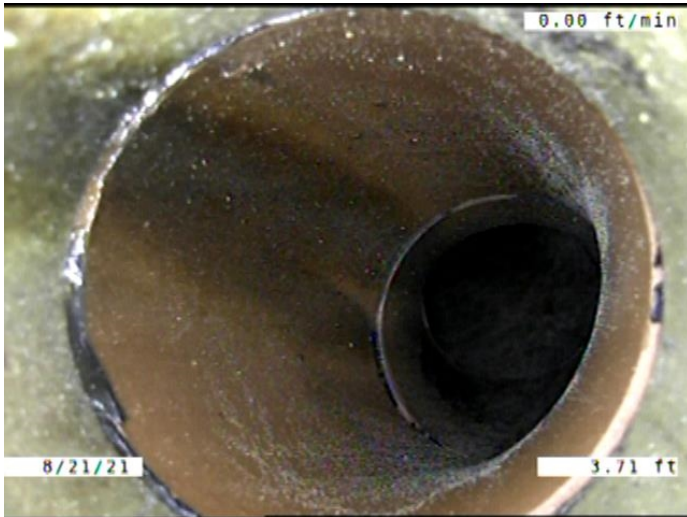
Code: **MWL**
 Description: **Miscellaneous Water Level**

Distance (ft): **.0**
 Structural Grade: **0**
 O&M Grade: **0**
 Clock Start/From:
 Clock To:
 1st Value:
 2nd Value:
 Value Percent: **5.000**
 Continuous Index:
 Within 8" of Joint: **NO**
 Remarks:



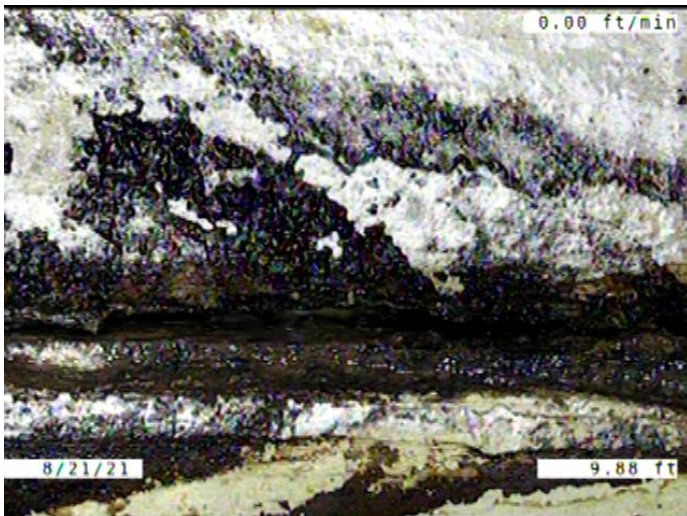
Code: **ISJ**
 Description: **Infiltration Stain Joint**

Distance (ft): **2.9**
 Structural Grade: **0**
 O&M Grade: **1**
 Clock Start/From: **8**
 Clock To: **4**
 1st Value:
 2nd Value:
 Value Percent:
 Continuous Index:
 Within 8" of Joint: **YES**
 Remarks:



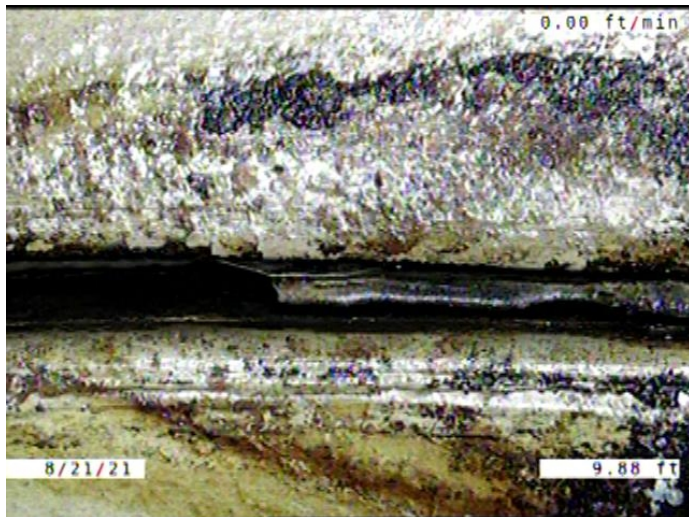
Code: **TF**
 Description: **Tap Factory**

Distance (ft): **3.7**
 Structural Grade: **0**
 O&M Grade: **0**
 Clock Start/From: **10**
 Clock To:
 1st Value: **4.000**
 2nd Value:
 Value Percent:
 Continuous Index:
 Within 8" of Joint: **YES**
 Remarks:



Code: **ISJ**
 Description: **Infiltration Stain Joint**

Distance (ft): **9.9**
 Structural Grade: **0**
 O&M Grade: **1**
 Clock Start/From: **7**
 Clock To: **10**
 1st Value:
 2nd Value:
 Value Percent:
 Continuous Index:
 Within 8" of Joint: **YES**
 Remarks:



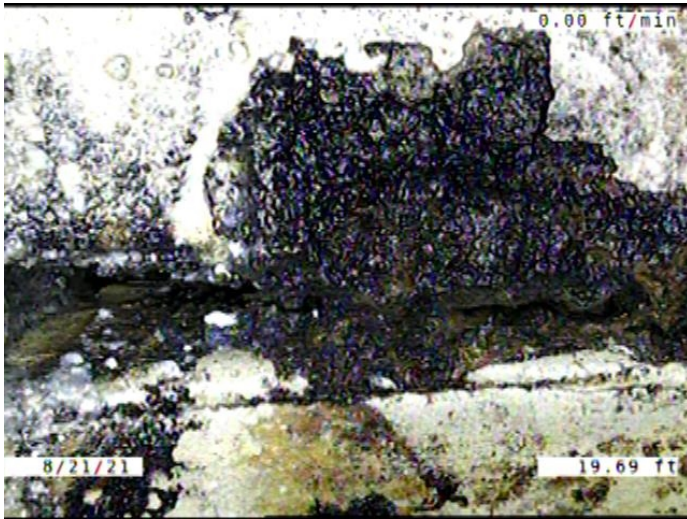
Code: **ISJ**
 Description: **Infiltration Stain Joint**

Distance (ft): **9.9**
 Structural Grade: **0**
 O&M Grade: **1**
 Clock Start/From: **2**
 Clock To: **4**
 1st Value:
 2nd Value:
 Value Percent:
 Continuous Index:
 Within 8" of Joint: **YES**
 Remarks:



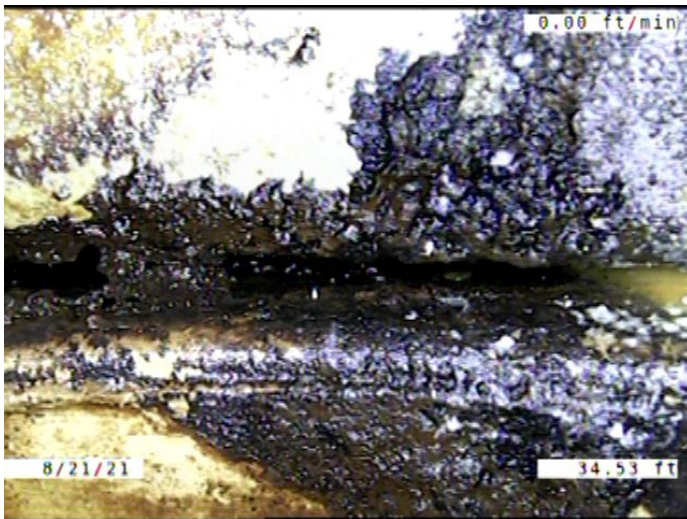
Code: **DSF**
 Description: **Deposits Settled Fine**

Distance (ft): **15.6**
 Structural Grade: **0**
 O&M Grade: **2**
 Clock Start/From: **5**
 Clock To: **7**
 1st Value:
 2nd Value:
 Value Percent: **5.000**
 Continuous Index:
 Within 8" of Joint: **YES**
 Remarks:



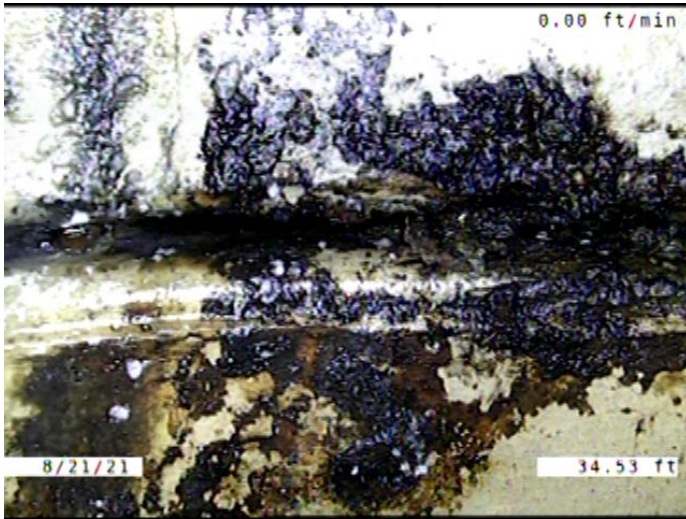
Code: **ISJ**
 Description: **Infiltration Stain Joint**

Distance (ft): **19.7**
 Structural Grade: **0**
 O&M Grade: **1**
 Clock Start/From: **8**
 Clock To: **4**
 1st Value:
 2nd Value:
 Value Percent:
 Continuous Index:
 Within 8" of Joint: **YES**
 Remarks:



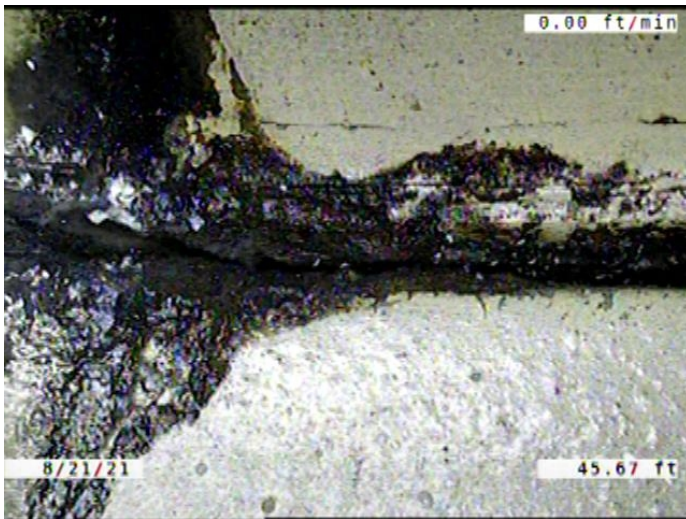
Code: **ISJ**
 Description: **Infiltration Stain Joint**

Distance (ft): **34.5**
 Structural Grade: **0**
 O&M Grade: **1**
 Clock Start/From: **2**
 Clock To: **5**
 1st Value:
 2nd Value:
 Value Percent:
 Continuous Index:
 Within 8" of Joint: **YES**
 Remarks:



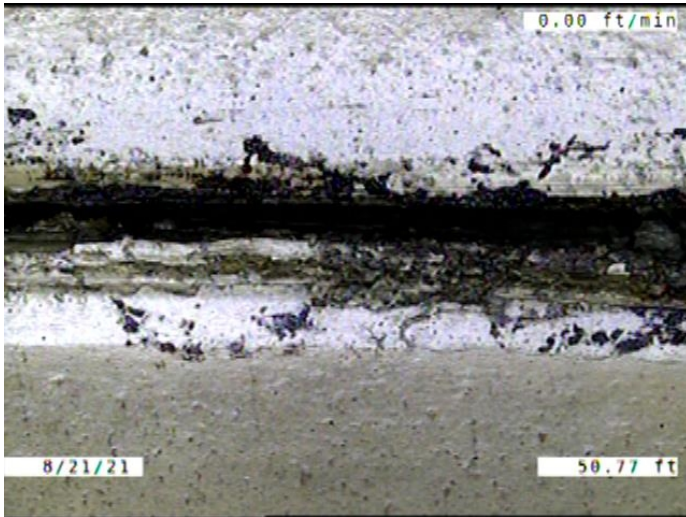
Code: **ISJ**
 Description: **Infiltration Stain Joint**

Distance (ft): **34.5**
 Structural Grade: **0**
 O&M Grade: **1**
 Clock Start/From: **8**
 Clock To: **11**
 1st Value:
 2nd Value:
 Value Percent:
 Continuous Index:
 Within 8" of Joint: **YES**
 Remarks:



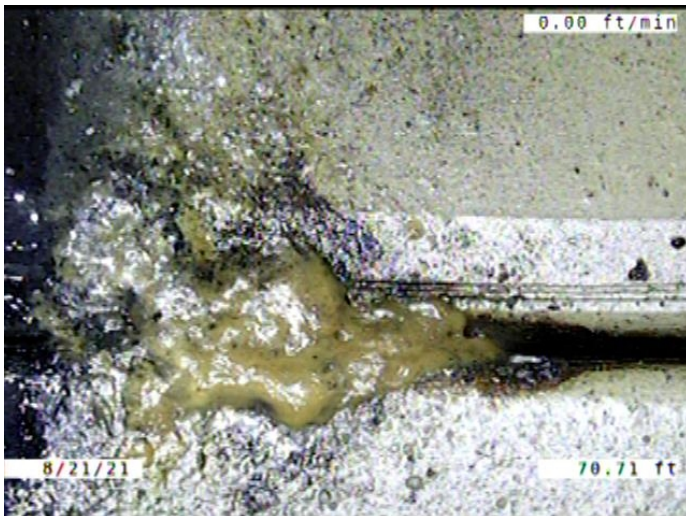
Code: **ISJ**
 Description: **Infiltration Stain Joint**

Distance (ft): **45.7**
 Structural Grade: **0**
 O&M Grade: **1**
 Clock Start/From: **3**
 Clock To: **5**
 1st Value:
 2nd Value:
 Value Percent:
 Continuous Index:
 Within 8" of Joint: **YES**
 Remarks:



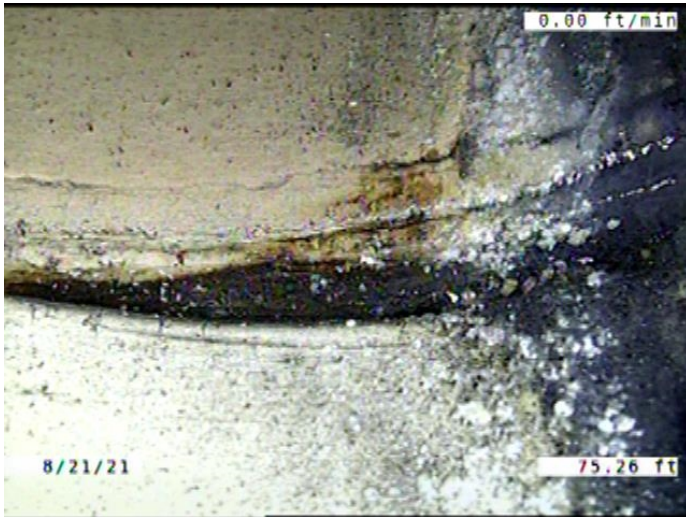
Code: **ISJ**
Description: **Infiltration Stain Joint**

Distance (ft): **50.8**
Structural Grade: **0**
O&M Grade: **1**
Clock Start/From: **9**
Clock To: **1**
1st Value:
2nd Value:
Value Percent:
Continuous Index:
Within 8" of Joint: **YES**
Remarks:



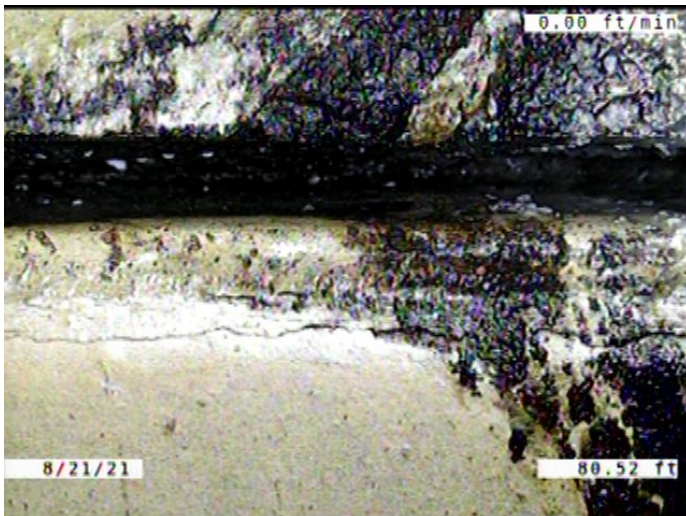
Code: **ISJ**
Description: **Infiltration Stain Joint**

Distance (ft): **70.7**
Structural Grade: **0**
O&M Grade: **1**
Clock Start/From: **4**
Clock To: **5**
1st Value:
2nd Value:
Value Percent:
Continuous Index:
Within 8" of Joint: **YES**
Remarks:



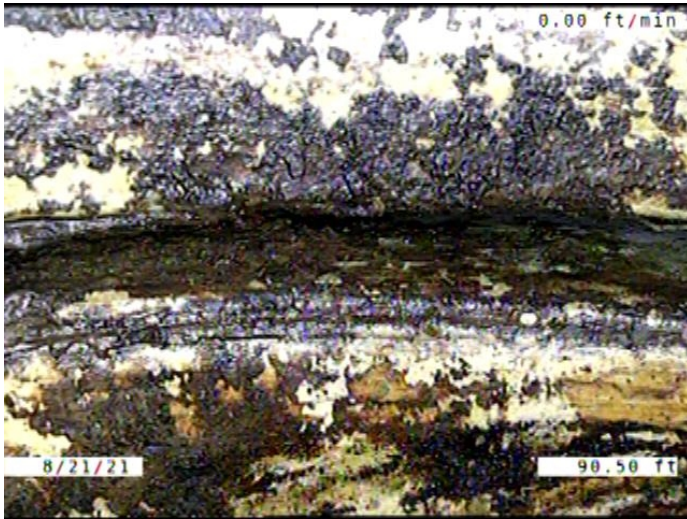
Code: **ISJ**
 Description: **Infiltration Stain Joint**

Distance (ft): **75.3**
 Structural Grade: **0**
 O&M Grade: **1**
 Clock Start/From: **8**
 Clock To: **9**
 1st Value:
 2nd Value:
 Value Percent:
 Continuous Index:
 Within 8" of Joint: **YES**
 Remarks:



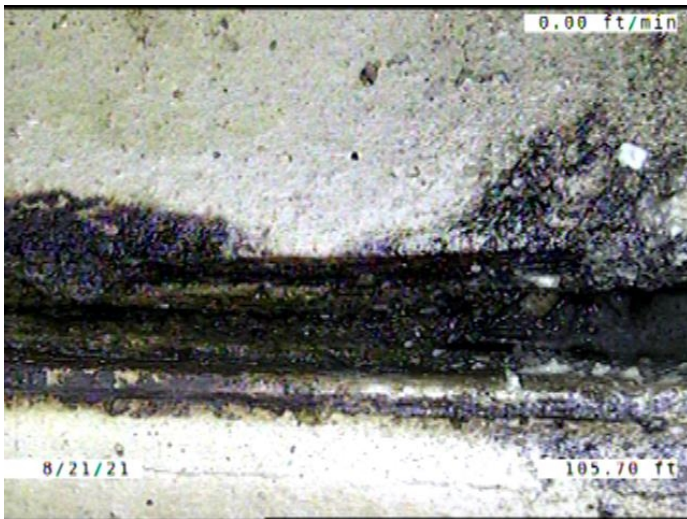
Code: **ISJ**
 Description: **Infiltration Stain Joint**

Distance (ft): **80.5**
 Structural Grade: **0**
 O&M Grade: **1**
 Clock Start/From: **2**
 Clock To: **5**
 1st Value:
 2nd Value:
 Value Percent:
 Continuous Index:
 Within 8" of Joint: **YES**
 Remarks:



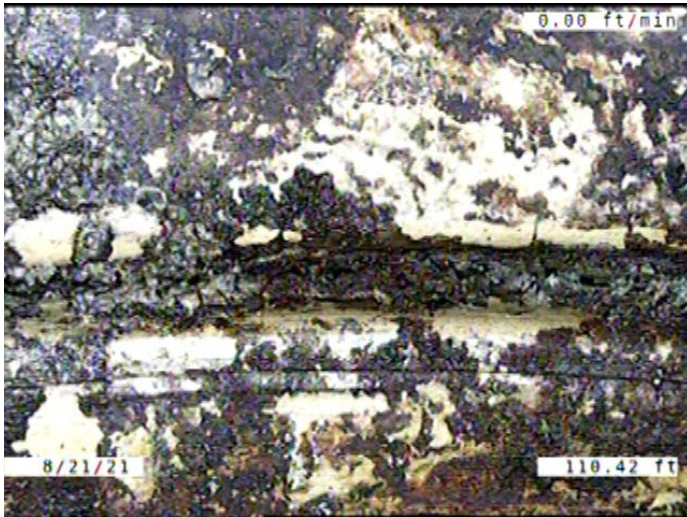
Code: **ISJ**
 Description: **Infiltration Stain Joint**

Distance (ft): **90.5**
 Structural Grade: **0**
 O&M Grade: **1**
 Clock Start/From: **7**
 Clock To: **11**
 1st Value:
 2nd Value:
 Value Percent:
 Continuous Index:
 Within 8" of Joint: **YES**
 Remarks:



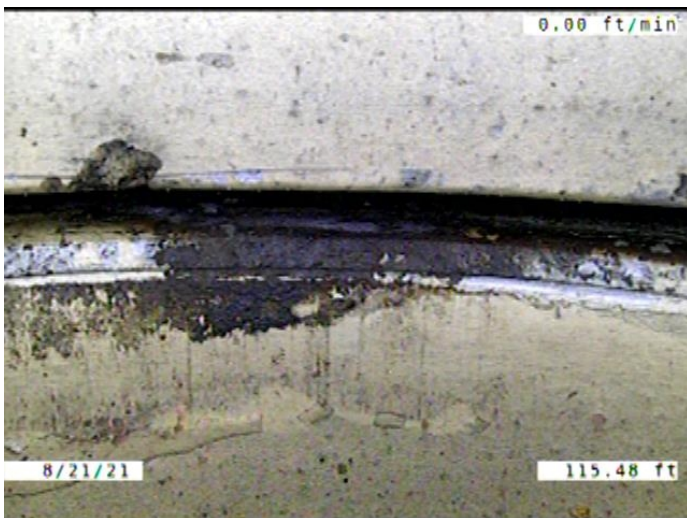
Code: **ISJ**
 Description: **Infiltration Stain Joint**

Distance (ft): **105.7**
 Structural Grade: **0**
 O&M Grade: **1**
 Clock Start/From: **1**
 Clock To: **5**
 1st Value:
 2nd Value:
 Value Percent:
 Continuous Index:
 Within 8" of Joint: **YES**
 Remarks:



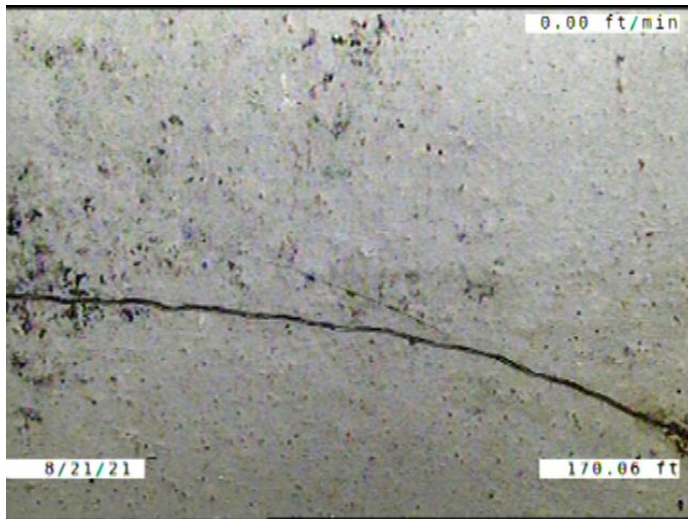
Code: **ISJ**
 Description: **Infiltration Stain Joint**

Distance (ft): **110.4**
 Structural Grade: **0**
 O&M Grade: **1**
 Clock Start/From: **8**
 Clock To: **10**
 1st Value:
 2nd Value:
 Value Percent:
 Continuous Index:
 Within 8" of Joint: **YES**
 Remarks:



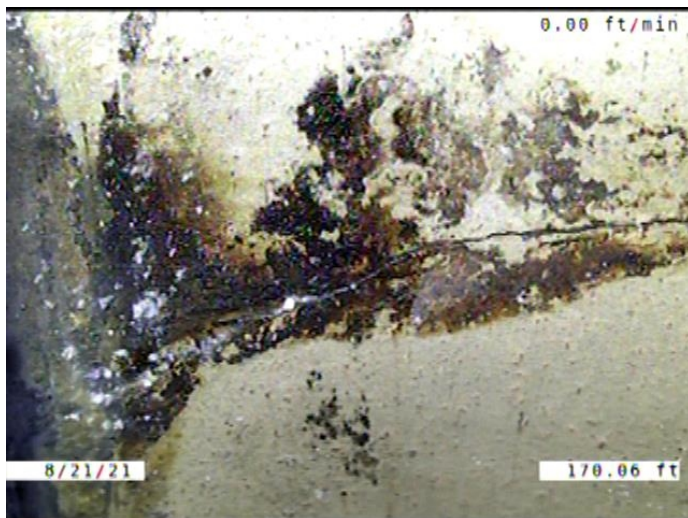
Code: **ISJ**
 Description: **Infiltration Stain Joint**

Distance (ft): **115.5**
 Structural Grade: **0**
 O&M Grade: **1**
 Clock Start/From: **11**
 Clock To: **12**
 1st Value:
 2nd Value:
 Value Percent:
 Continuous Index:
 Within 8" of Joint: **YES**
 Remarks:



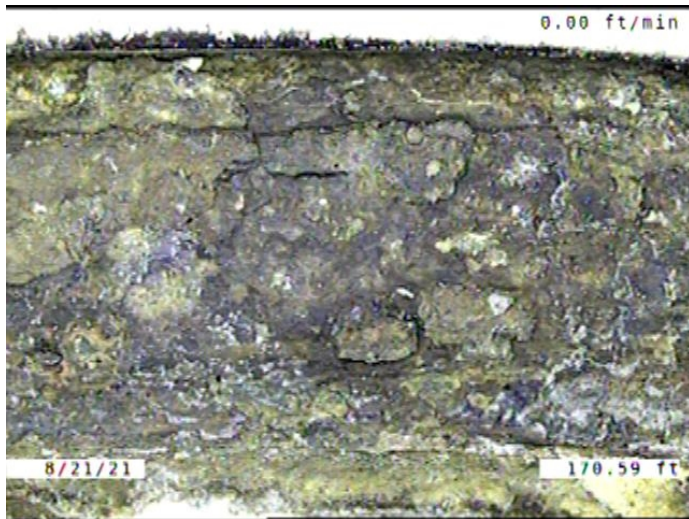
Code: **FM**
 Description: **Fracture Multiple**

Distance (ft): **170.1**
 Structural Grade: **4**
 O&M Grade: **0**
 Clock Start/From: **12**
 Clock To: **12**
 1st Value:
 2nd Value:
 Value Percent:
 Continuous Index:
 Within 8" of Joint: **NO**
 Remarks:



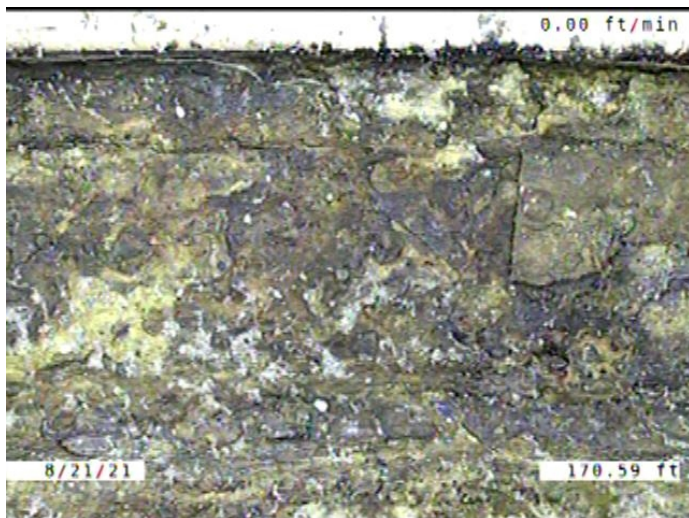
Code: **ISB**
 Description: **Infiltration Stain Barrel**

Distance (ft): **170.1**
 Structural Grade: **0**
 O&M Grade: **1**
 Clock Start/From: **3**
 Clock To: **9**
 1st Value:
 2nd Value:
 Value Percent:
 Continuous Index:
 Within 8" of Joint: **NO**
 Remarks:



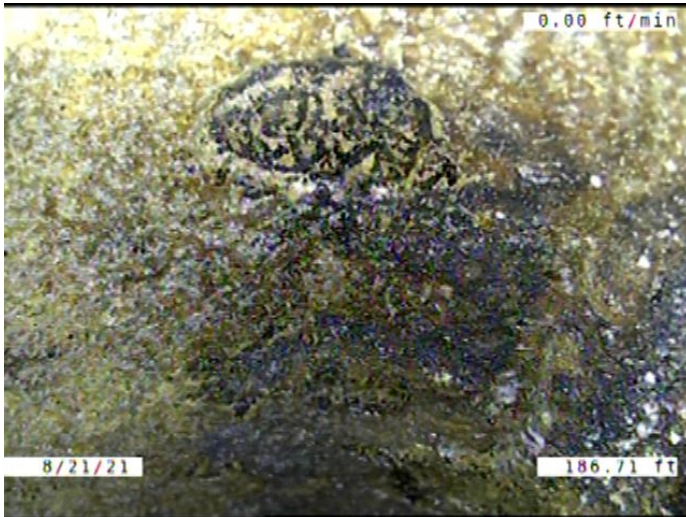
Code: **MMC**
 Description: **Miscellaneous Material Change**

Distance (ft): **170.6**
 Structural Grade: **0**
 O&M Grade: **0**
 Clock Start/From:
 Clock To:
 1st Value:
 2nd Value:
 Value Percent:
 Continuous Index:
 Within 8" of Joint: **NO**
 Remarks: **VCP TO CAST IRON**

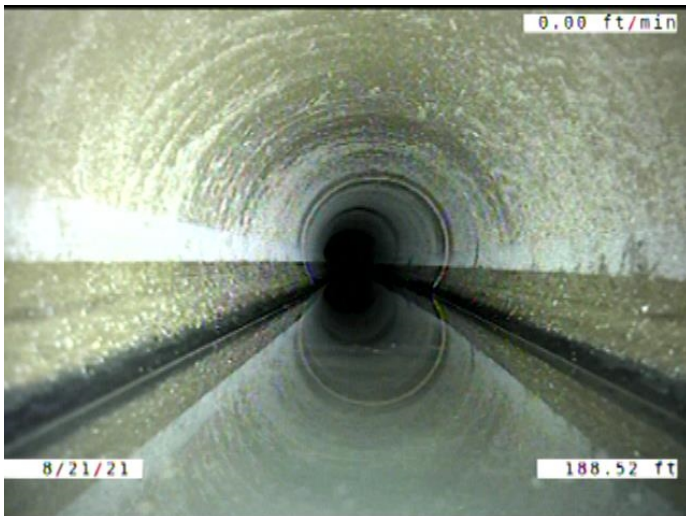


Code: **JSM**
 Description: **Joint Separated Medium**

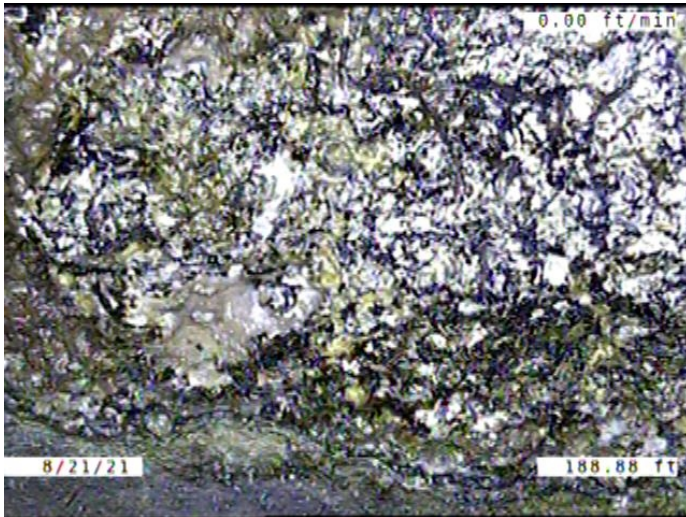
Distance (ft): **170.6**
 Structural Grade: **3**
 O&M Grade: **0**
 Clock Start/From:
 Clock To:
 1st Value:
 2nd Value:
 Value Percent:
 Continuous Index:
 Within 8" of Joint: **NO**
 Remarks:



Code:	SSC
Description:	Surface Spalling of Damage Coating
Distance (ft):	186.7
Structural Grade:	1
O&M Grade:	0
Clock Start/From:	12
Clock To:	12
1st Value:	
2nd Value:	
Value Percent:	
Continuous Index:	S01
Within 8" of Joint:	YES
Remarks:	

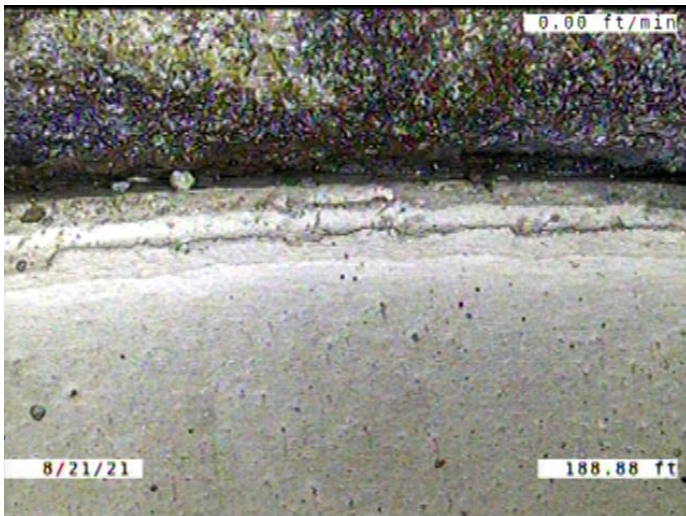


Code:	MWLS
Description:	Miscellaneous Water Level Sag
Distance (ft):	188.5
Structural Grade:	2
O&M Grade:	0
Clock Start/From:	
Clock To:	
1st Value:	
2nd Value:	
Value Percent:	10.000
Continuous Index:	
Within 8" of Joint:	NO
Remarks:	



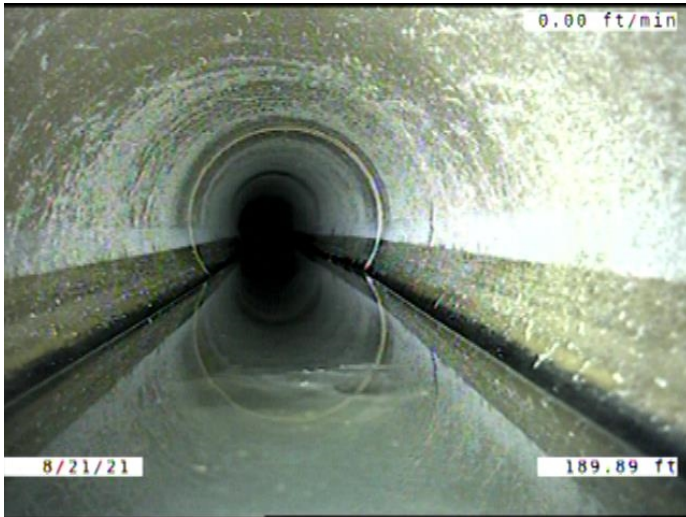
Code: **DAE**
Description: **Deposits Attached Encrustation**

Distance (ft): **188.9**
Structural Grade: **0**
O&M Grade: **2**
Clock Start/From: **12**
Clock To: **4**
1st Value:
2nd Value:
Value Percent: **5.000**
Continuous Index:
Within 8" of Joint: **YES**
Remarks:



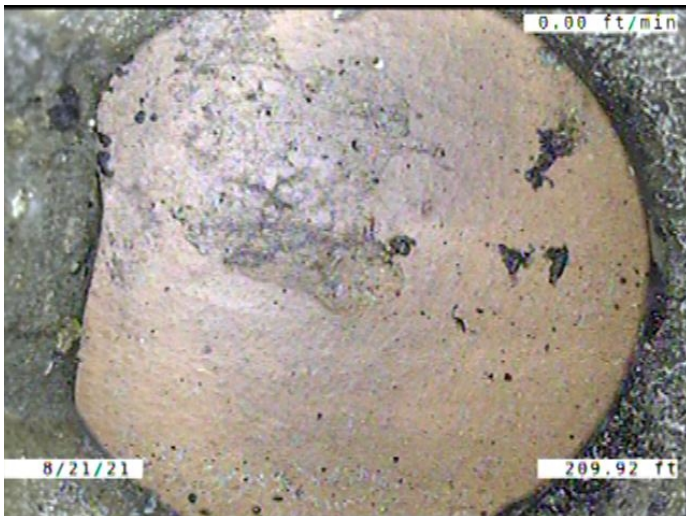
Code: **MMC**
Description: **Miscellaneous Material Change**

Distance (ft): **188.9**
Structural Grade: **0**
O&M Grade: **0**
Clock Start/From:
Clock To:
1st Value:
2nd Value:
Value Percent:
Continuous Index:
Within 8" of Joint: **NO**
Remarks: **CAST IRON TO VCP**



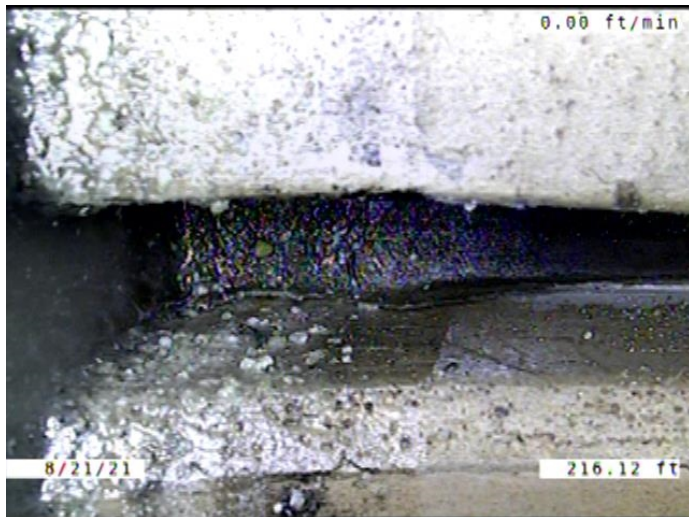
Code: **SSC**
 Description: **Surface Spalling of Damage Coating**

Distance (ft): **189.9**
 Structural Grade: **1**
 O&M Grade: **0**
 Clock Start/From: **12**
 Clock To: **12**
 1st Value:
 2nd Value:
 Value Percent:
 Continuous Index: **F01**
 Within 8" of Joint: **YES**
 Remarks:



Code: **TFC**
 Description: **Tap Factory Capped**

Distance (ft): **209.9**
 Structural Grade: **0**
 O&M Grade: **0**
 Clock Start/From: **9**
 Clock To:
 1st Value: **6.000**
 2nd Value:
 Value Percent:
 Continuous Index:
 Within 8" of Joint: **YES**
 Remarks:



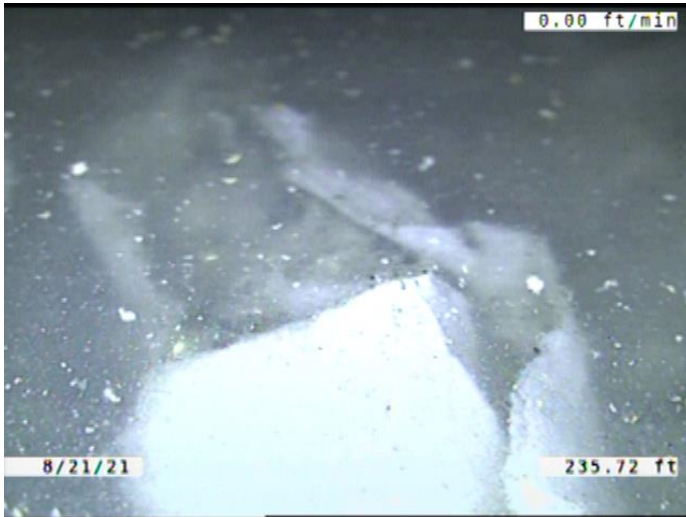
Code: **JAM**
 Description: **Joint Angular Medium**

Distance (ft): **216.1**
 Structural Grade: **3**
 O&M Grade: **0**
 Clock Start/From:
 Clock To:
 1st Value:
 2nd Value:
 Value Percent:
 Continuous Index:
 Within 8" of Joint: **NO**
 Remarks:



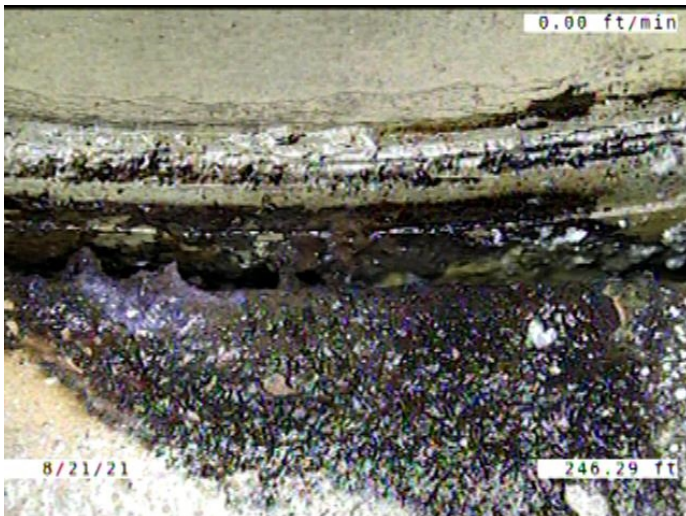
Code: **MWLS**
 Description: **Miscellaneous Water Level Sag**

Distance (ft): **232.3**
 Structural Grade: **2**
 O&M Grade: **0**
 Clock Start/From:
 Clock To:
 1st Value:
 2nd Value:
 Value Percent: **10.000**
 Continuous Index: **S02**
 Within 8" of Joint: **NO**
 Remarks:



Code: **DSF**
 Description: **Deposits Settled Fine**

Distance (ft): **235.7**
 Structural Grade: **0**
 O&M Grade: **2**
 Clock Start/From: **5**
 Clock To: **7**
 1st Value:
 2nd Value:
 Value Percent: **5.000**
 Continuous Index:
 Within 8" of Joint: **YES**
 Remarks:



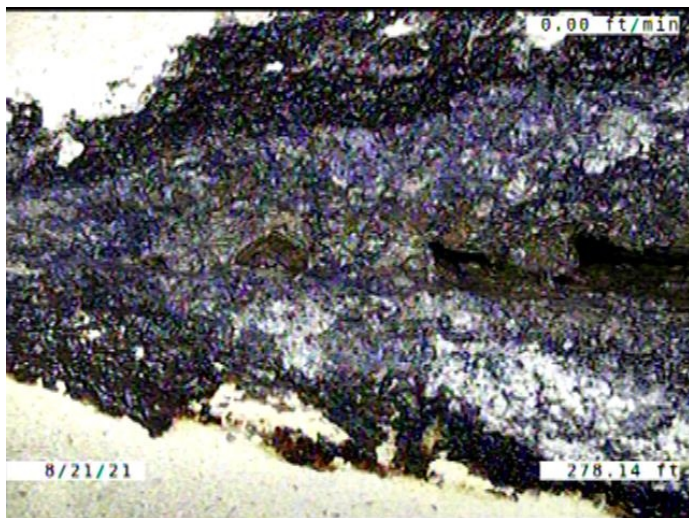
Code: **ISJ**
 Description: **Infiltration Stain Joint**

Distance (ft): **246.3**
 Structural Grade: **0**
 O&M Grade: **1**
 Clock Start/From: **7**
 Clock To: **9**
 1st Value:
 2nd Value:
 Value Percent:
 Continuous Index:
 Within 8" of Joint: **YES**
 Remarks:



Code: **MWLS**
 Description: **Miscellaneous Water Level Sag**

Distance (ft): **246.3**
 Structural Grade: **2**
 O&M Grade: **0**
 Clock Start/From:
 Clock To:
 1st Value:
 2nd Value:
 Value Percent: **10.000**
 Continuous Index: **F02**
 Within 8" of Joint: **NO**
 Remarks:



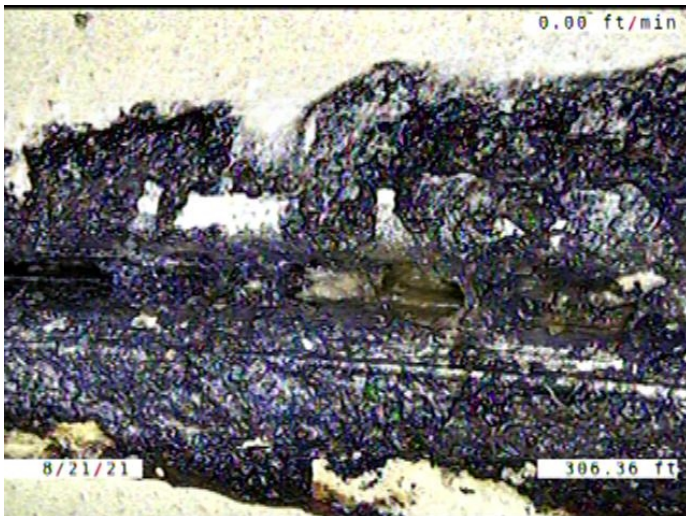
Code: **ISJ**
 Description: **Infiltration Stain Joint**

Distance (ft): **278.1**
 Structural Grade: **0**
 O&M Grade: **1**
 Clock Start/From: **1**
 Clock To: **4**
 1st Value:
 2nd Value:
 Value Percent:
 Continuous Index:
 Within 8" of Joint: **YES**
 Remarks:



Code: **ISJ**
 Description: **Infiltration Stain Joint**

Distance (ft): **296.2**
 Structural Grade: **0**
 O&M Grade: **1**
 Clock Start/From: **7**
 Clock To: **5**
 1st Value:
 2nd Value:
 Value Percent:
 Continuous Index:
 Within 8" of Joint: **YES**
 Remarks:



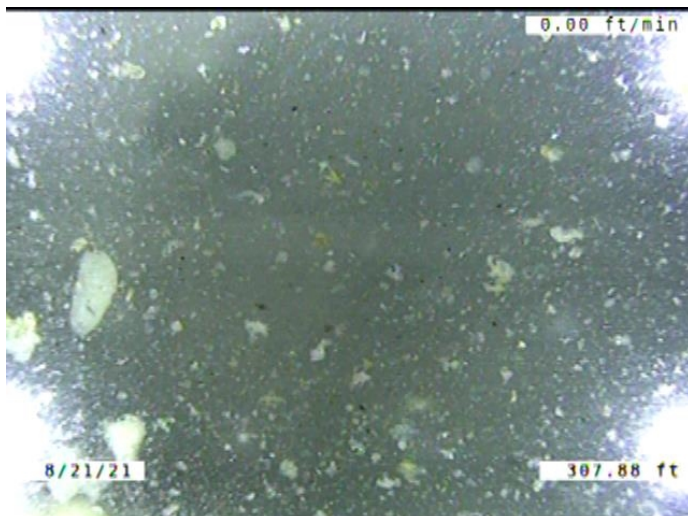
Code: **ISJ**
 Description: **Infiltration Stain Joint**

Distance (ft): **306.4**
 Structural Grade: **0**
 O&M Grade: **1**
 Clock Start/From: **9**
 Clock To: **3**
 1st Value:
 2nd Value:
 Value Percent:
 Continuous Index:
 Within 8" of Joint: **YES**
 Remarks:



Code: **MWL**
 Description: **Miscellaneous Water Level**

Distance (ft): **306.4**
 Structural Grade: **0**
 O&M Grade: **0**
 Clock Start/From:
 Clock To:
 1st Value:
 2nd Value:
 Value Percent: **15.000**
 Continuous Index:
 Within 8" of Joint: **NO**
 Remarks:



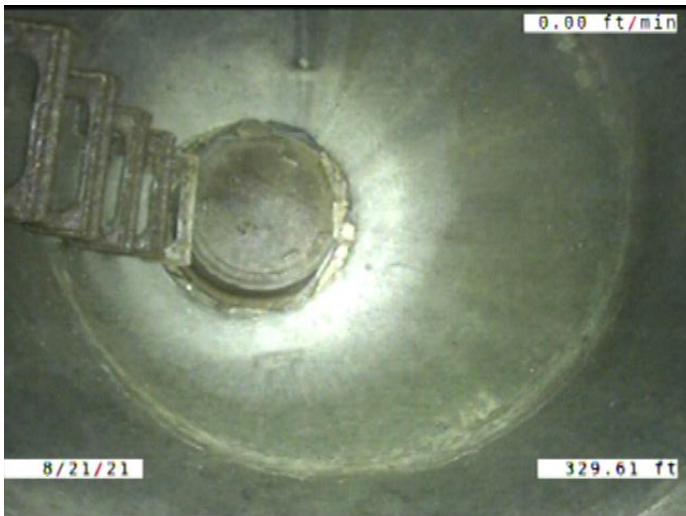
Code: **DSF**
 Description: **Deposits Settled Fine**

Distance (ft): **307.9**
 Structural Grade: **0**
 O&M Grade: **2**
 Clock Start/From: **5**
 Clock To: **7**
 1st Value:
 2nd Value:
 Value Percent: **5.000**
 Continuous Index: **S03**
 Within 8" of Joint: **YES**
 Remarks:



Code: **DSF**
 Description: **Deposits Settled Fine**

Distance (ft): **329.6**
 Structural Grade: **0**
 O&M Grade: **2**
 Clock Start/From: **5**
 Clock To: **7**
 1st Value:
 2nd Value:
 Value Percent: **5.000**
 Continuous Index: **F03**
 Within 8" of Joint: **YES**
 Remarks:



Code: **AMH**
 Description: **Manhole**

Distance (ft): **329.6**
 Structural Grade: **0**
 O&M Grade: **0**
 Clock Start/From:
 Clock To:
 1st Value:
 2nd Value:
 Value Percent:
 Continuous Index:
 Within 8" of Joint: **NO**
 Remarks: **M-503-078**