

Profile/Photo Observation Report



Date:	11/05/2021	Weather:		Coding:	PACP 7.0
Pipe Length (ft):	331.0	Owner:	City of Hobart	Pre Clean:	Heavy Cleaning
P.O.#:	YES502259	Surveyor:	S. Bucklin	PSR:	P-504-056-028
Customer:	City of Hobart	Clean Date:	11/05/2021	Shape:	C

Street:	North Wilson Street	Flow Control:	Not Controlled
City:	Hobart, IN	Year Renewed:	
Location:	Alley	Tape/Media #:	
Purpose:	Routine Assessment	Dia/Height:	12"
Use:	Sanitary Sewage Pipe	Material:	VCP
Drain Area:		Lining:	None
Category:	NA		
Comment:			
Location Details:		Direction of Survey:	Upstream
US MH:	M-504-028	DS MH:	M-504-056
		Total Length Surveyed (ft):	240.8

O&M Index:	1.91	O&M Quick:	322F	O&M Rating:	84.00
Structural Index:	3.11	Structural Quick:	4C3D	Structural Rating:	196.00
Overall Index:	2.62	Overall Quick:	4C3E	Overall Rating:	280.00

Position	Code	Observation	Video (sec)	Grade
.0	AMH	Manhole	3	NA
.0	MWL	Miscellaneous Water Level	15	NA
5.0	MGO	Miscellaneous General Observation	24	NA
19.5	MMC	Miscellaneous Material Change	135	NA
19.5	CM	Crack Multiple	195	S 3
27.9	JOM	Joint Offset Medium	246	S 3
36.8	JOM	Joint Offset Medium	304	S 3
39.7	FM(S01)	Fracture Multiple	404	S 4
39.9	JOMD	Joint Offset Medium Defective	422	S 3
43.0	JOSD(S02)	Joint Offset Small Defective	452	NA
55.2	JOL	Joint Offset Large	582	S 4
55.3	MMC	Miscellaneous Material Change	557	NA
55.4	FM(F01)	Fracture Multiple	605	S 4
55.4	JOSD(F02)	Joint Offset Small Defective	613	NA
59.6	TFA	Tap Factory Activity	705	NA
61.6	TF	Tap Factory	745	NA
64.7	MMC	Miscellaneous Material Change	821	NA
66.8	DSF(S03)	Deposits Settled Fine	851	M 2
73.5	SSS	Surface Damage Surface Spalling	895	S 2

79.0	SSS	Surface Damage Surface Spalling	940	S 2
82.5	CL	Crack Longitudinal	985	S 2
82.5	JOM	Joint Offset Medium	1006	S 3
84.8	JOMD(S04)	Joint Offset Medium Defective	1040	S 3
89.6	FM(S05)	Fracture Multiple	1119	S 4
94.3	B	Broken	1206	S 4
95.9	TBI	Tap Break-in Intruding	1266	M 2
98.6	FM(F05)	Fracture Multiple	1298	S 4
109.6	MMC	Miscellaneous Material Change	1377	NA
111.7	TF	Tap Factory	1419	NA
113.1	MMC	Miscellaneous Material Change	1467	NA
115.5	SSS	Surface Damage Surface Spalling	1503	S 2
121.9	RFJ	Roots Fine Joint	1564	M 1
126.7	SSS	Surface Damage Surface Spalling	1600	S 2
139.9	MMC	Miscellaneous Material Change	1666	NA
139.9	JOL	Joint Offset Large	1713	S 4
146.3	TF	Tap Factory	1793	NA
149.4	MMC	Miscellaneous Material Change	1875	NA
149.7	FM(S07)	Fracture Multiple	1919	S 4
152.3	RFJ(S08)	Roots Fine Joint	1987	M 1
167.3	RMJ	Roots Medium Joint	2112	M 3
170.3	RMJ	Roots Medium Joint	2148	M 3
173.2	MMC	Miscellaneous Material Change	2202	NA
173.2	FM(F07)	Fracture Multiple	2219	S 4
173.2	RFJ(F08)	Roots Fine Joint	2228	M 1
177.8	TF	Tap Factory	2266	NA
182.6	MMC	Miscellaneous Material Change	2332	NA
182.6	FM(S10)	Fracture Multiple	2358	S 4
185.4	B	Broken	2432	S 4
185.4	JOLD	Joint Offset Large Defective	2452	S 4
191.4	MMC	Miscellaneous Material Change	2527	NA
193.5	JOMD(F04)	Joint Offset Medium Defective	2567	S 3
193.5	FM(F10)	Fracture Multiple	2575	S 4
197.1	TF	Tap Factory	2609	NA
198.2	MWLS(S11)	Miscellaneous Water Level Sag	2633	S 2
210.9	TF	Tap Factory	2690	NA
225.2	MMC	Miscellaneous Material Change	2857	NA
225.2	FM(S12)	Fracture Multiple	2873	S 4
227.9	RFJ	Roots Fine Joint	2984	M 1
234.2	SZ	Surface Damage Other	3143	NA
236.4	JOM	Joint Offset Medium	3191	S 3
239.2	SSS	Surface Damage Surface Spalling	3222	S 2

240.7	DR	Deformed Rigid	3245	S 4
240.7	DSF(F03)	Deposits Settled Fine	3260	M 2
240.7	MWLS(F11)	Miscellaneous Water Level Sag	3269	S 2
240.7	FM(F12)	Fracture Multiple	3277	S 4
240.8	MSA	Miscellaneous Survey Abandoned	3291	NA

M-504-028



Code: **AMH**
Description: **Manhole**

Distance (ft): **.0**
Structural Grade: **0**
O&M Grade: **0**
Clock Start/From:
Clock To:
1st Value:
2nd Value:
Value Percent:
Continuous Index:
Within 8" of Joint: **NO**
Remarks: **M-504-056**



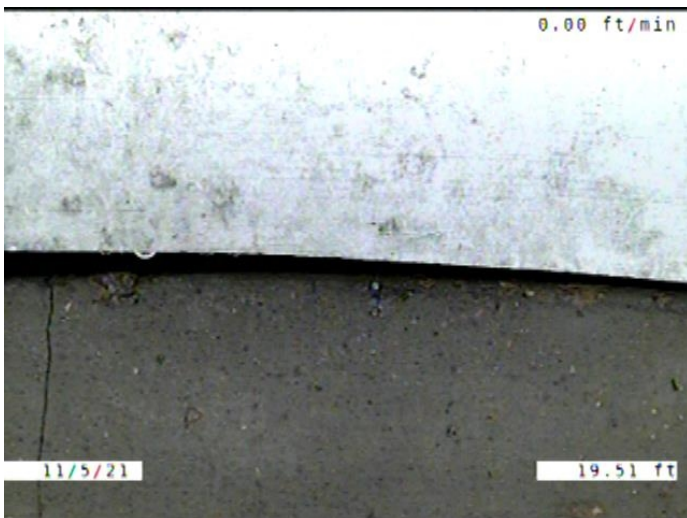
Code: **MWL**
Description: **Miscellaneous Water Level**

Distance (ft): **.0**
Structural Grade: **0**
O&M Grade: **0**
Clock Start/From:
Clock To:
1st Value:
2nd Value:
Value Percent: **5.000**
Continuous Index:
Within 8" of Joint: **NO**
Remarks:



Code: **MGO**
Description: **Miscellaneous General Observation**

Distance (ft): **5.0**
Structural Grade: **0**
O&M Grade: **0**
Clock Start/From:
Clock To:
1st Value:
2nd Value:
Value Percent:
Continuous Index:
Within 8" of Joint: **NO**
Remarks: **PIPE WAS TOO STEEP COMING INTO THE MANHOLE. HAD TO START IN O**



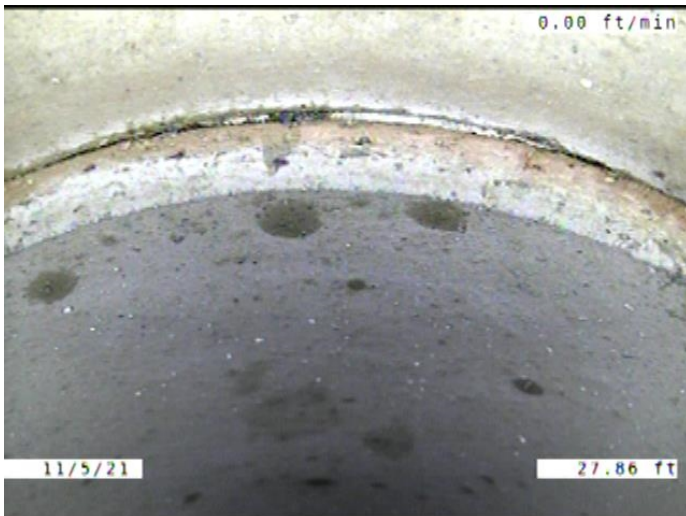
Code: **MMC**
Description: **Miscellaneous Material Change**

Distance (ft): **19.5**
Structural Grade: **0**
O&M Grade: **0**
Clock Start/From:
Clock To:
1st Value:
2nd Value:
Value Percent:
Continuous Index:
Within 8" of Joint: **NO**
Remarks: **PVC TO VCP**



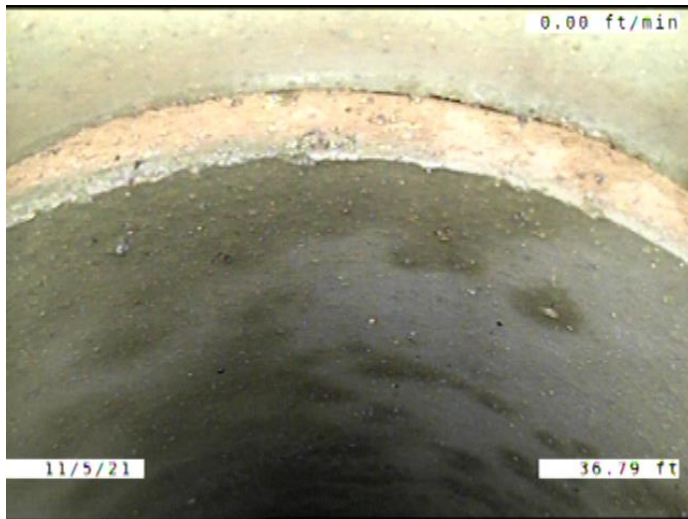
Code: **CM**
 Description: **Crack Multiple**

Distance (ft): **19.5**
 Structural Grade: **3**
 O&M Grade: **0**
 Clock Start/From: **12**
 Clock To: **12**
 1st Value:
 2nd Value:
 Value Percent:
 Continuous Index:
 Within 8" of Joint: **YES**
 Remarks:



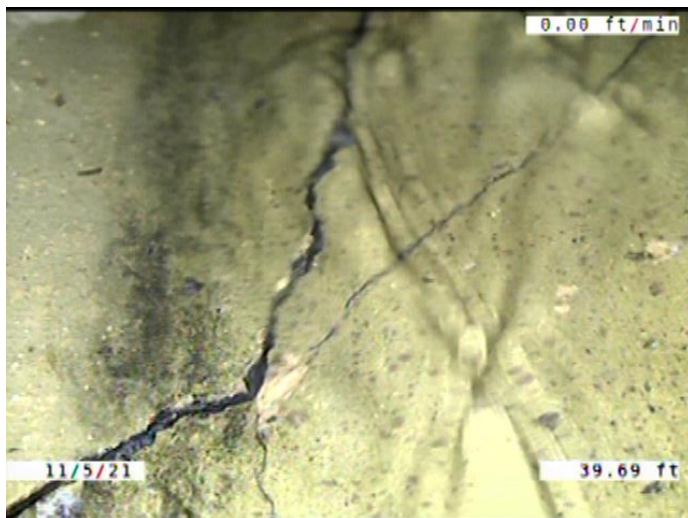
Code: **JOM**
 Description: **Joint Offset Medium**

Distance (ft): **27.9**
 Structural Grade: **3**
 O&M Grade: **0**
 Clock Start/From:
 Clock To:
 1st Value:
 2nd Value:
 Value Percent:
 Continuous Index:
 Within 8" of Joint: **NO**
 Remarks:



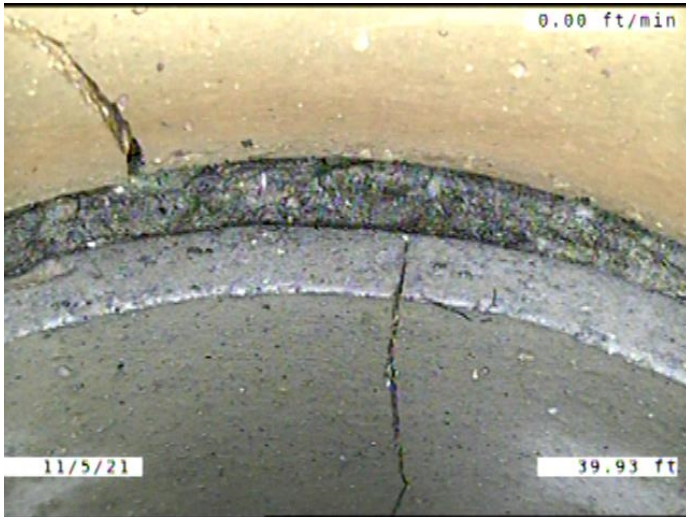
Code: **JOM**
 Description: **Joint Offset Medium**

Distance (ft): **36.8**
 Structural Grade: **3**
 O&M Grade: **0**
 Clock Start/From:
 Clock To:
 1st Value:
 2nd Value:
 Value Percent:
 Continuous Index:
 Within 8" of Joint: **NO**
 Remarks:



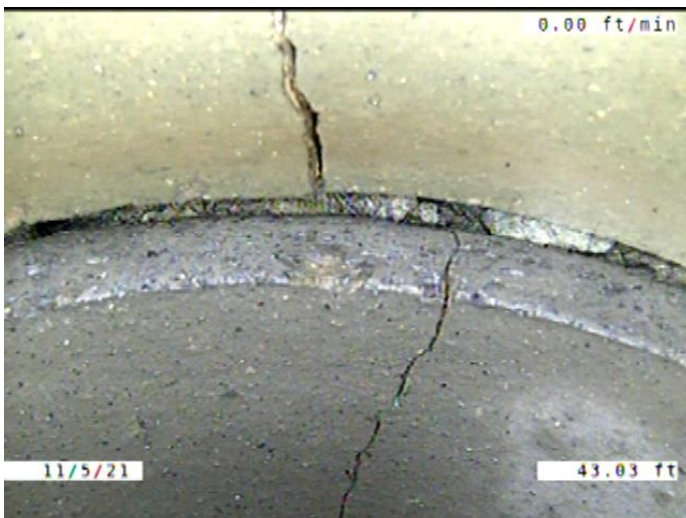
Code: **FM**
 Description: **Fracture Multiple**

Distance (ft): **39.7**
 Structural Grade: **4**
 O&M Grade: **0**
 Clock Start/From: **12**
 Clock To: **12**
 1st Value:
 2nd Value:
 Value Percent:
 Continuous Index: **S01**
 Within 8" of Joint: **YES**
 Remarks:



Code: **JOMD**
Description: **Joint Offset Medium Defective**

Distance (ft): **39.9**
Structural Grade: **3**
O&M Grade: **0**
Clock Start/From:
Clock To:
1st Value:
2nd Value:
Value Percent:
Continuous Index:
Within 8" of Joint: **NO**
Remarks:



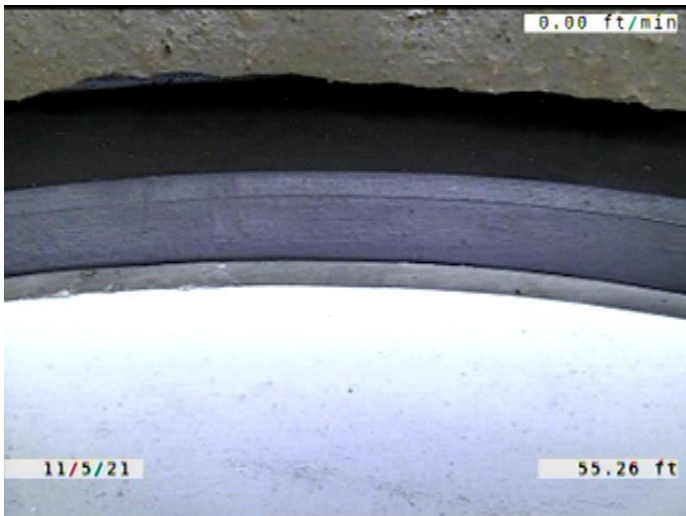
Code: **JOSD**
Description: **Joint Offset Small Defective**

Distance (ft): **43.0**
Structural Grade: **0**
O&M Grade: **0**
Clock Start/From:
Clock To:
1st Value:
2nd Value:
Value Percent:
Continuous Index: **S02**
Within 8" of Joint: **NO**
Remarks:



Code: **JOL**
 Description: **Joint Offset Large**

Distance (ft): **55.2**
 Structural Grade: **4**
 O&M Grade: **0**
 Clock Start/From:
 Clock To:
 1st Value: **1.000**
 2nd Value:
 Value Percent:
 Continuous Index:
 Within 8" of Joint: **NO**
 Remarks:



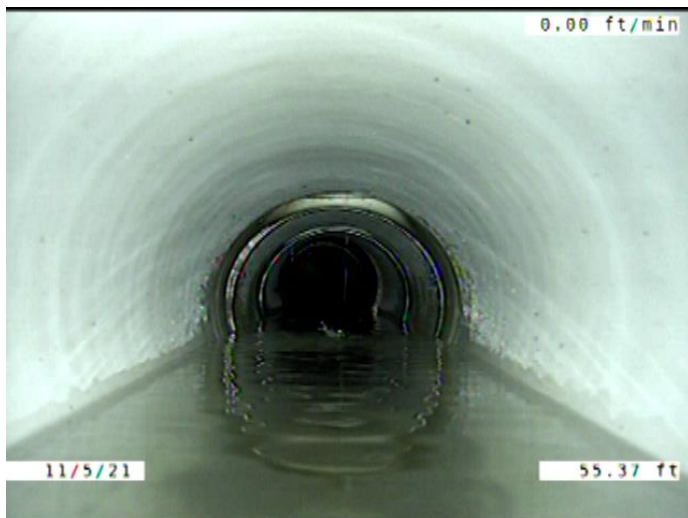
Code: **MMC**
 Description: **Miscellaneous Material Change**

Distance (ft): **55.3**
 Structural Grade: **0**
 O&M Grade: **0**
 Clock Start/From:
 Clock To:
 1st Value:
 2nd Value:
 Value Percent:
 Continuous Index:
 Within 8" of Joint: **NO**
 Remarks: **VCP TO PVC**



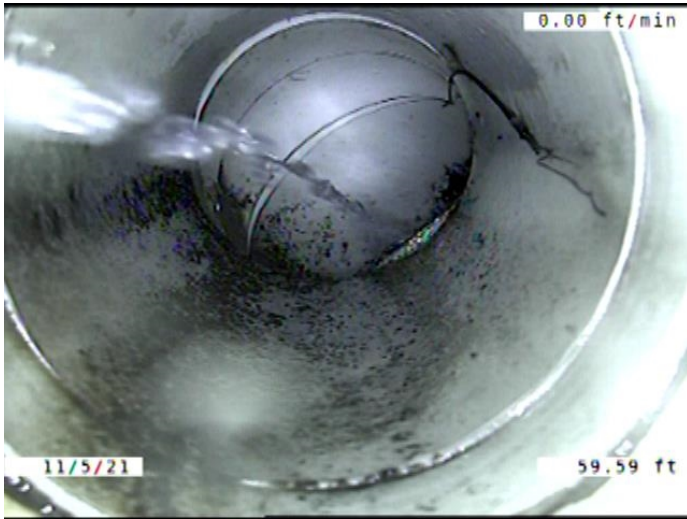
Code: **FM**
Description: **Fracture Multiple**

Distance (ft): **55.4**
Structural Grade: **4**
O&M Grade: **0**
Clock Start/From: **12**
Clock To: **12**
1st Value:
2nd Value:
Value Percent:
Continuous Index: **F01**
Within 8" of Joint: **YES**
Remarks:



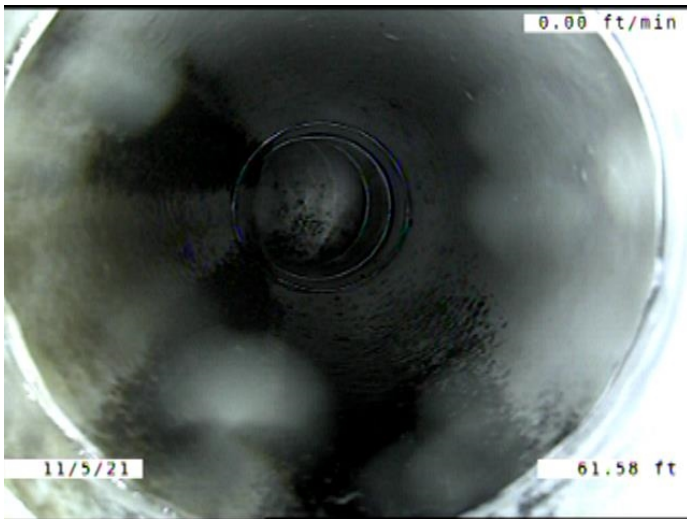
Code: **JOSD**
Description: **Joint Offset Small Defective**

Distance (ft): **55.4**
Structural Grade: **0**
O&M Grade: **0**
Clock Start/From:
Clock To:
1st Value:
2nd Value:
Value Percent:
Continuous Index: **F02**
Within 8" of Joint: **NO**
Remarks:



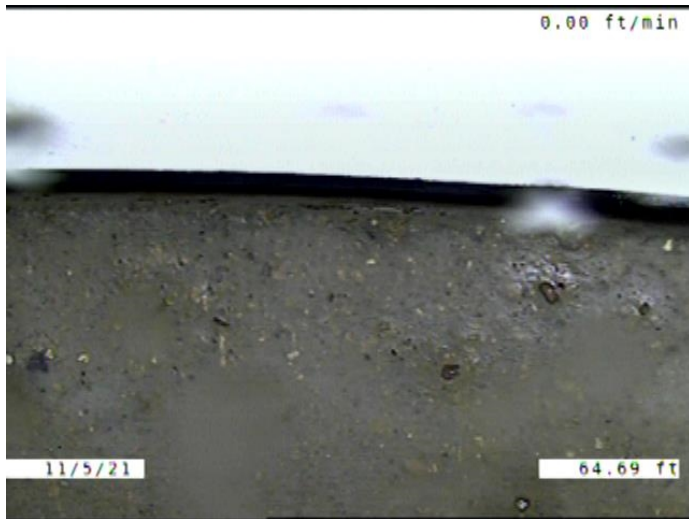
Code: **TFA**
 Description: **Tap Factory Activity**

Distance (ft): **59.6**
 Structural Grade: **0**
 O&M Grade: **0**
 Clock Start/From: **12**
 Clock To:
 1st Value: **4.000**
 2nd Value:
 Value Percent:
 Continuous Index:
 Within 8" of Joint: **YES**
 Remarks:



Code: **TF**
 Description: **Tap Factory**

Distance (ft): **61.6**
 Structural Grade: **0**
 O&M Grade: **0**
 Clock Start/From: **12**
 Clock To:
 1st Value: **4.000**
 2nd Value:
 Value Percent:
 Continuous Index:
 Within 8" of Joint: **YES**
 Remarks:



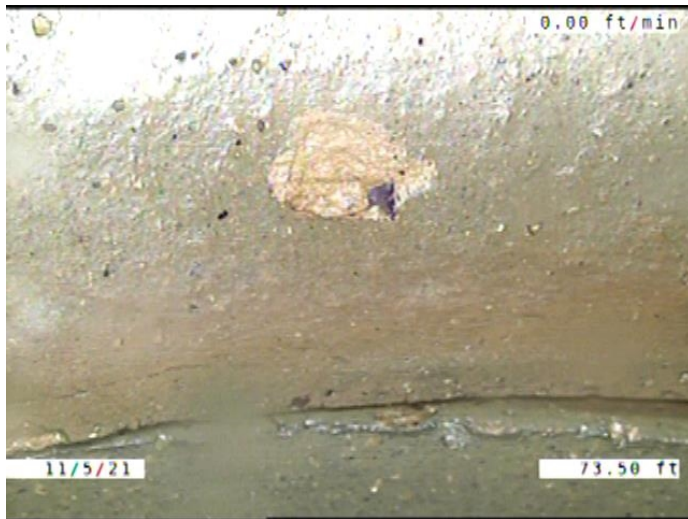
Code: **MMC**
Description: **Miscellaneous Material Change**

Distance (ft): **64.7**
Structural Grade: **0**
O&M Grade: **0**
Clock Start/From:
Clock To:
1st Value:
2nd Value:
Value Percent:
Continuous Index:
Within 8" of Joint: **NO**
Remarks: **PVC TO VCP**



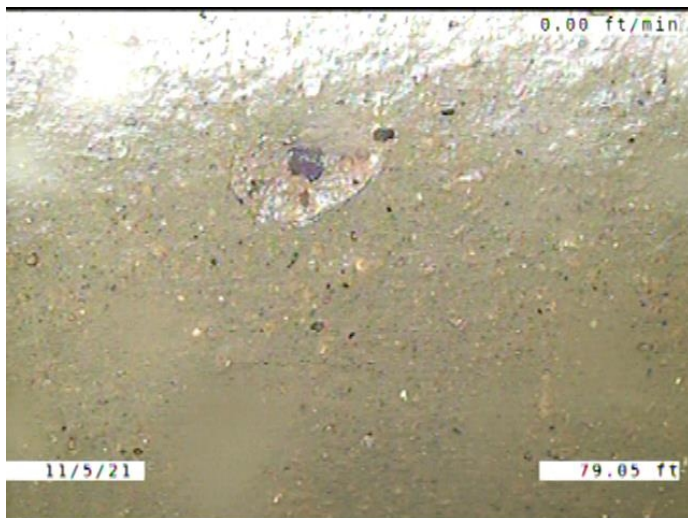
Code: **DSF**
Description: **Deposits Settled Fine**

Distance (ft): **66.8**
Structural Grade: **0**
O&M Grade: **2**
Clock Start/From: **5**
Clock To: **7**
1st Value:
2nd Value:
Value Percent: **5.000**
Continuous Index: **S03**
Within 8" of Joint: **YES**
Remarks:



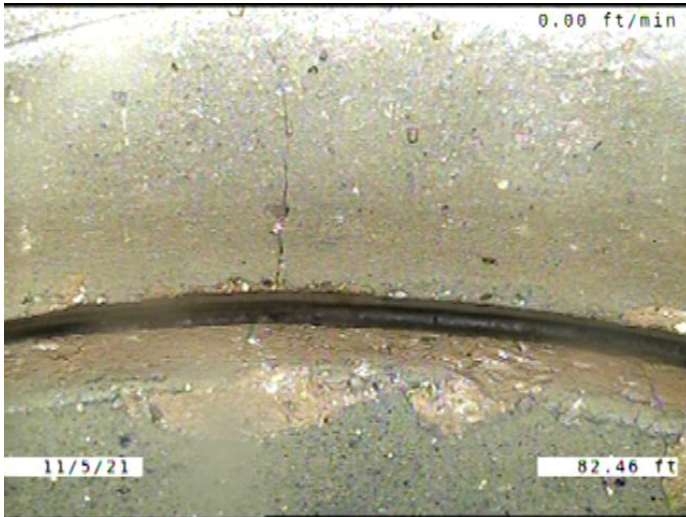
Code: **SSS**
Description: **Surface Damage Surface Spalling**

Distance (ft): **73.5**
Structural Grade: **2**
O&M Grade: **0**
Clock Start/From: **9**
Clock To:
1st Value:
2nd Value:
Value Percent:
Continuous Index:
Within 8" of Joint: **YES**
Remarks:



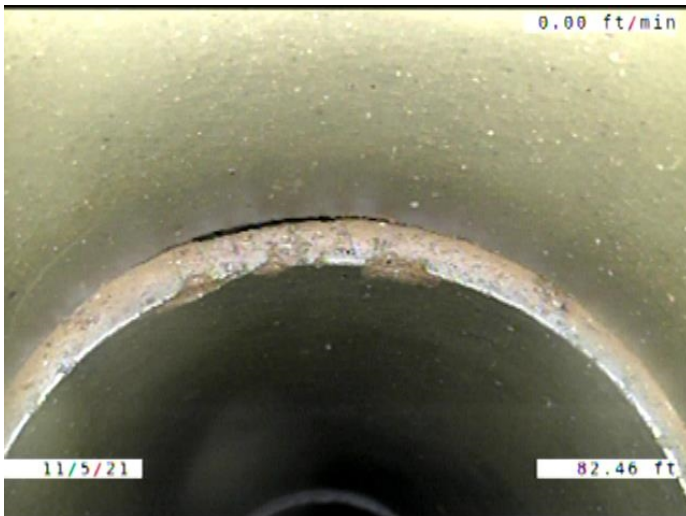
Code: **SSS**
Description: **Surface Damage Surface Spalling**

Distance (ft): **79.0**
Structural Grade: **2**
O&M Grade: **0**
Clock Start/From: **9**
Clock To:
1st Value:
2nd Value:
Value Percent:
Continuous Index:
Within 8" of Joint: **YES**
Remarks:



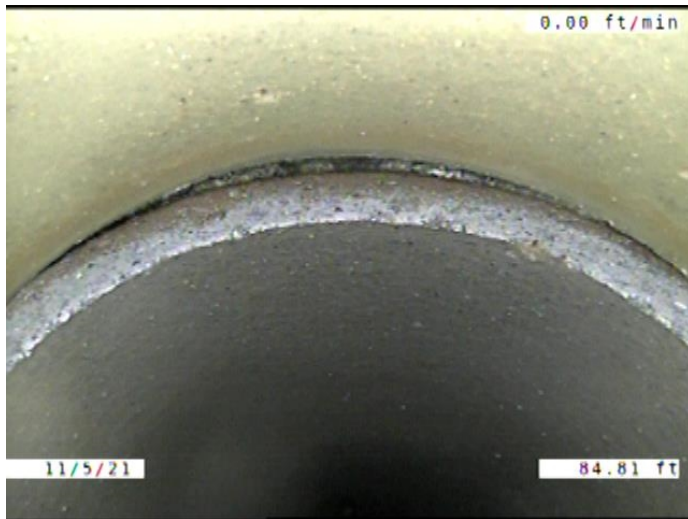
Code: **CL**
Description: **Crack Longitudinal**

Distance (ft): **82.5**
Structural Grade: **2**
O&M Grade: **0**
Clock Start/From: **12**
Clock To:
1st Value:
2nd Value:
Value Percent:
Continuous Index:
Within 8" of Joint: **YES**
Remarks:



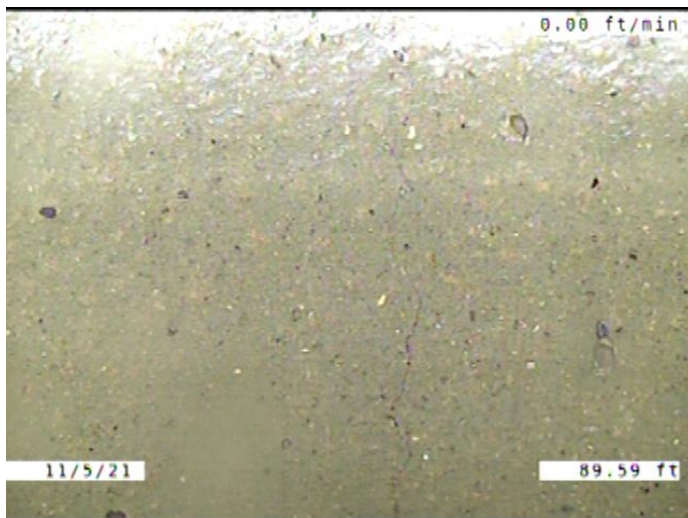
Code: **JOM**
Description: **Joint Offset Medium**

Distance (ft): **82.5**
Structural Grade: **3**
O&M Grade: **0**
Clock Start/From:
Clock To:
1st Value:
2nd Value:
Value Percent:
Continuous Index:
Within 8" of Joint: **NO**
Remarks:



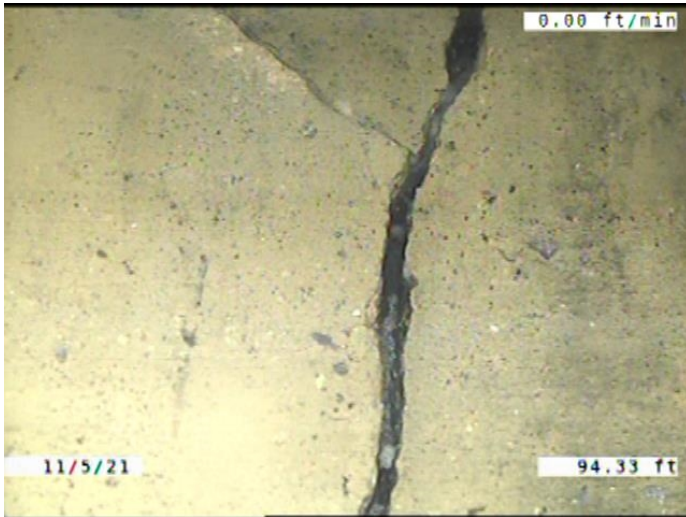
Code: **JOMD**
Description: **Joint Offset Medium Defective**

Distance (ft): **84.8**
Structural Grade: **3**
O&M Grade: **0**
Clock Start/From:
Clock To:
1st Value:
2nd Value:
Value Percent:
Continuous Index: **S04**
Within 8" of Joint: **NO**
Remarks:



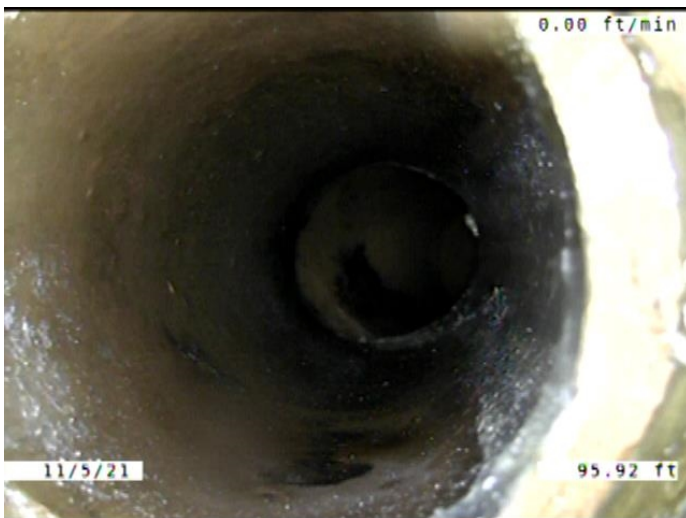
Code: **FM**
Description: **Fracture Multiple**

Distance (ft): **89.6**
Structural Grade: **4**
O&M Grade: **0**
Clock Start/From: **12**
Clock To: **12**
1st Value:
2nd Value:
Value Percent:
Continuous Index: **S05**
Within 8" of Joint: **YES**
Remarks:



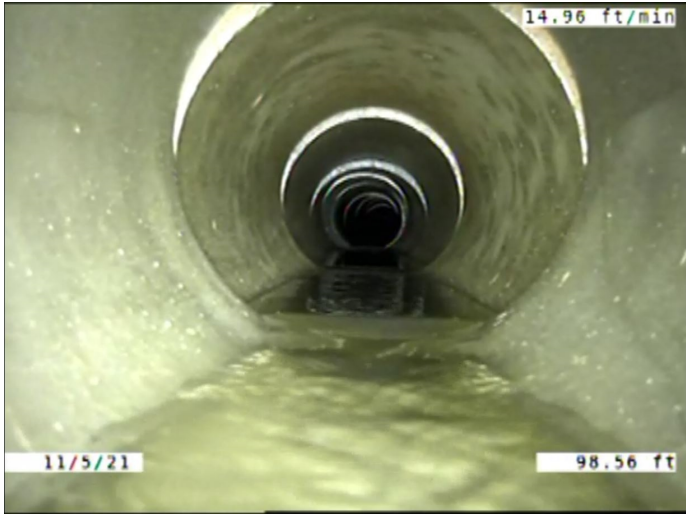
Code: **B**
Description: **Broken**

Distance (ft): **94.3**
Structural Grade: **4**
O&M Grade: **0**
Clock Start/From: **12**
Clock To: **6**
1st Value:
2nd Value:
Value Percent:
Continuous Index:
Within 8" of Joint: **YES**
Remarks:



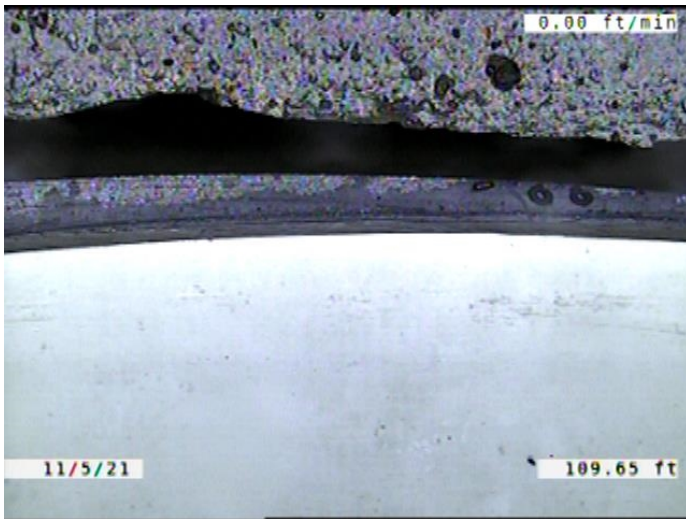
Code: **TBI**
Description: **Tap Break-in Intruding**

Distance (ft): **95.9**
Structural Grade: **0**
O&M Grade: **2**
Clock Start/From: **1**
Clock To:
1st Value: **4.000**
2nd Value: **1.000**
Value Percent:
Continuous Index:
Within 8" of Joint: **YES**
Remarks: **CONSTANTLY RUNNING WATER.**



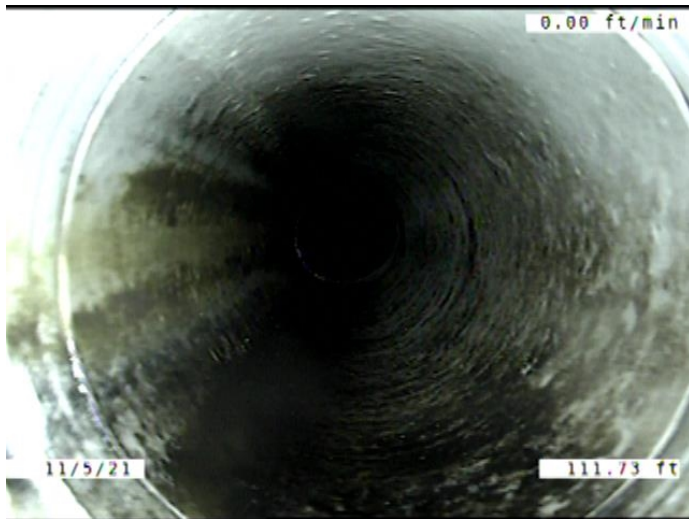
Code: **FM**
Description: **Fracture Multiple**

Distance (ft): **98.6**
Structural Grade: **4**
O&M Grade: **0**
Clock Start/From: **12**
Clock To: **12**
1st Value:
2nd Value:
Value Percent:
Continuous Index: **F05**
Within 8" of Joint: **YES**
Remarks:



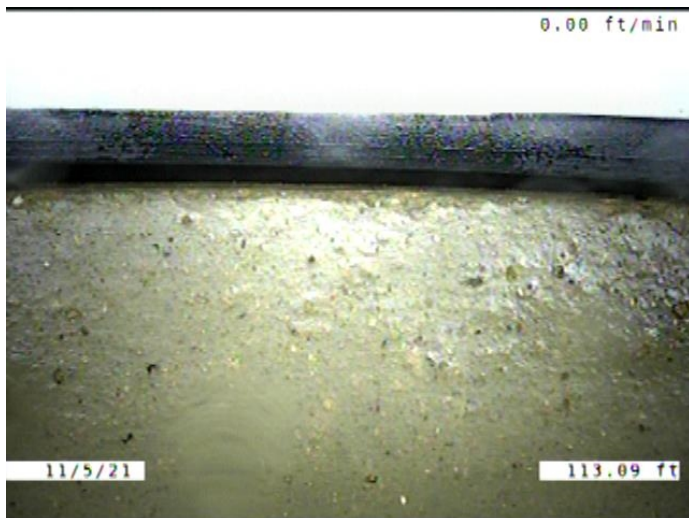
Code: **MMC**
Description: **Miscellaneous Material Change**

Distance (ft): **109.6**
Structural Grade: **0**
O&M Grade: **0**
Clock Start/From:
Clock To:
1st Value:
2nd Value:
Value Percent:
Continuous Index:
Within 8" of Joint: **NO**
Remarks: **VCP TO PVC**



Code: **TF**
Description: **Tap Factory**

Distance (ft): **111.7**
Structural Grade: **0**
O&M Grade: **0**
Clock Start/From: **11**
Clock To:
1st Value: **4.000**
2nd Value:
Value Percent:
Continuous Index:
Within 8" of Joint: **YES**
Remarks:



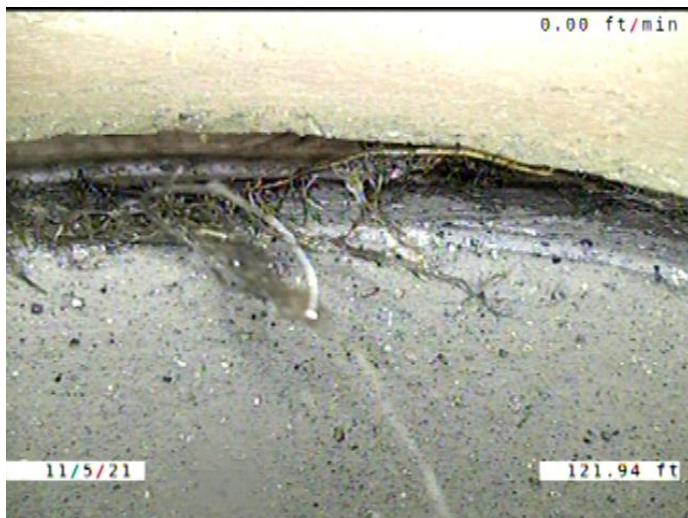
Code: **MMC**
Description: **Miscellaneous Material Change**

Distance (ft): **113.1**
Structural Grade: **0**
O&M Grade: **0**
Clock Start/From:
Clock To:
1st Value:
2nd Value:
Value Percent:
Continuous Index:
Within 8" of Joint: **NO**
Remarks: **PVC TO VCP**



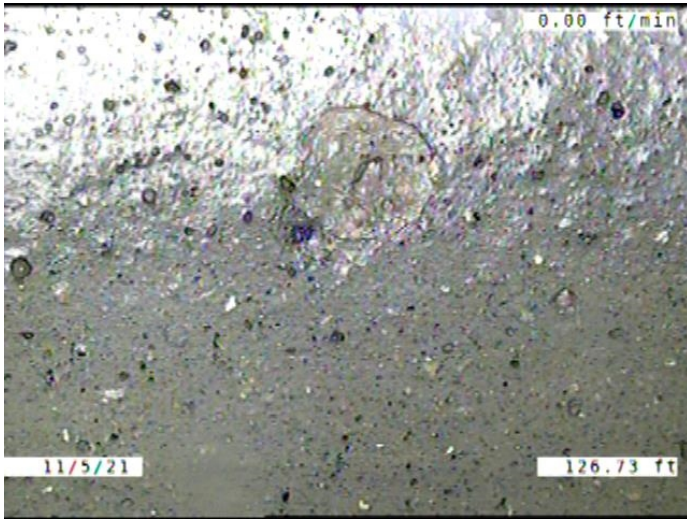
Code: **SSS**
 Description: **Surface Damage Surface Spalling**

Distance (ft): **115.5**
 Structural Grade: **2**
 O&M Grade: **0**
 Clock Start/From: **10**
 Clock To:
 1st Value:
 2nd Value:
 Value Percent:
 Continuous Index:
 Within 8" of Joint: **YES**
 Remarks:



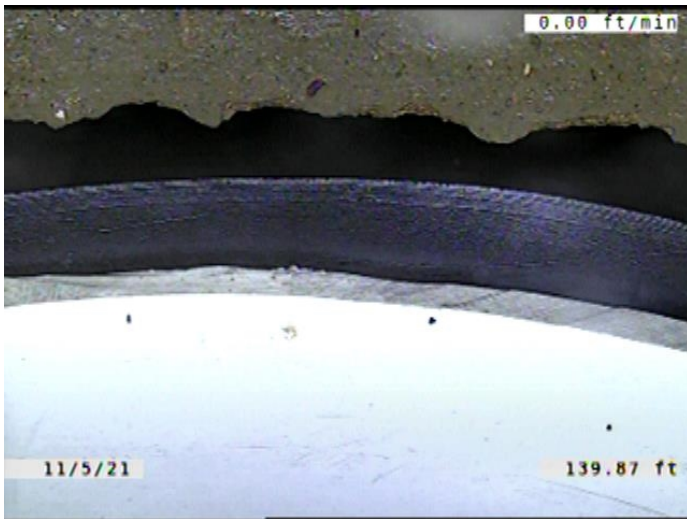
Code: **RFJ**
 Description: **Roots Fine Joint**

Distance (ft): **121.9**
 Structural Grade: **0**
 O&M Grade: **1**
 Clock Start/From: **11**
 Clock To: **2**
 1st Value:
 2nd Value:
 Value Percent:
 Continuous Index:
 Within 8" of Joint: **YES**
 Remarks:



Code: **SSS**
Description: **Surface Damage Surface Spalling**

Distance (ft): **126.7**
Structural Grade: **2**
O&M Grade: **0**
Clock Start/From: **8**
Clock To: **9**
1st Value:
2nd Value:
Value Percent:
Continuous Index:
Within 8" of Joint: **NO**
Remarks:



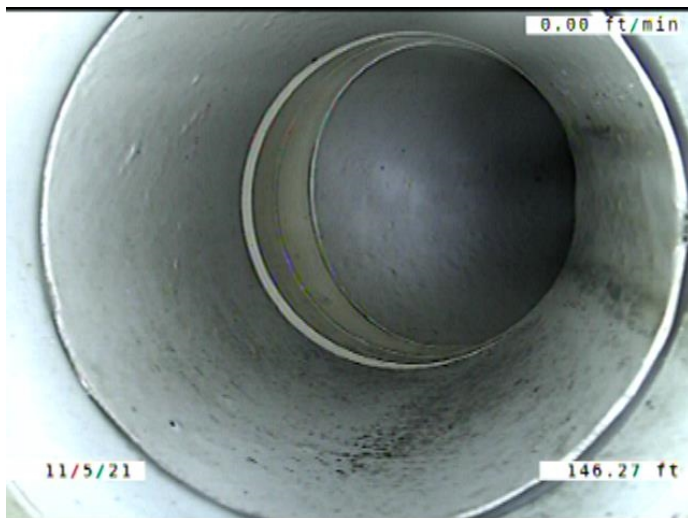
Code: **MMC**
Description: **Miscellaneous Material Change**

Distance (ft): **139.9**
Structural Grade: **0**
O&M Grade: **0**
Clock Start/From:
Clock To:
1st Value:
2nd Value:
Value Percent:
Continuous Index:
Within 8" of Joint: **NO**
Remarks: **VCP TO PVC**



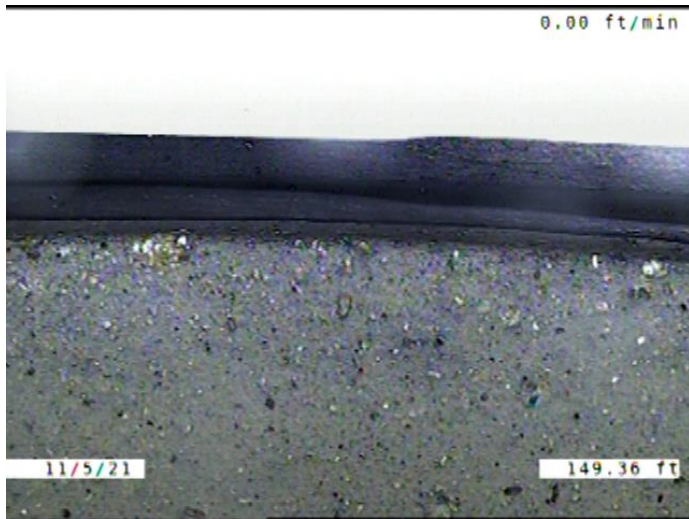
Code: **JOL**
Description: **Joint Offset Large**

Distance (ft): **139.9**
Structural Grade: **4**
O&M Grade: **0**
Clock Start/From:
Clock To:
1st Value: **1.000**
2nd Value:
Value Percent:
Continuous Index:
Within 8" of Joint: **NO**
Remarks:



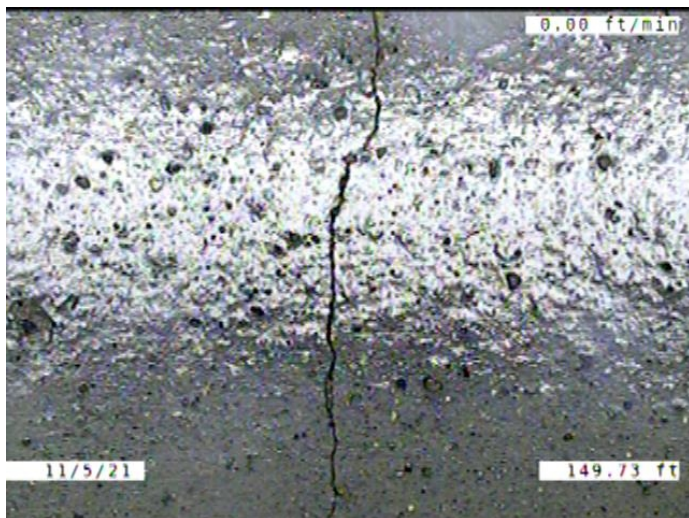
Code: **TF**
Description: **Tap Factory**

Distance (ft): **146.3**
Structural Grade: **0**
O&M Grade: **0**
Clock Start/From: **1**
Clock To:
1st Value: **4.000**
2nd Value:
Value Percent:
Continuous Index:
Within 8" of Joint: **YES**
Remarks: **CONSTANTLY RUNNING WATER.**



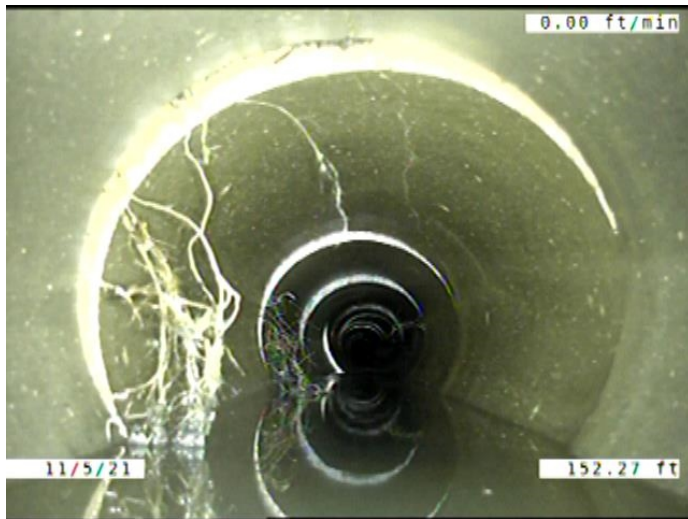
Code: **MMC**
Description: **Miscellaneous Material Change**

Distance (ft): **149.4**
Structural Grade: **0**
O&M Grade: **0**
Clock Start/From:
Clock To:
1st Value:
2nd Value:
Value Percent:
Continuous Index:
Within 8" of Joint: **NO**
Remarks: **PVC TO VCP**



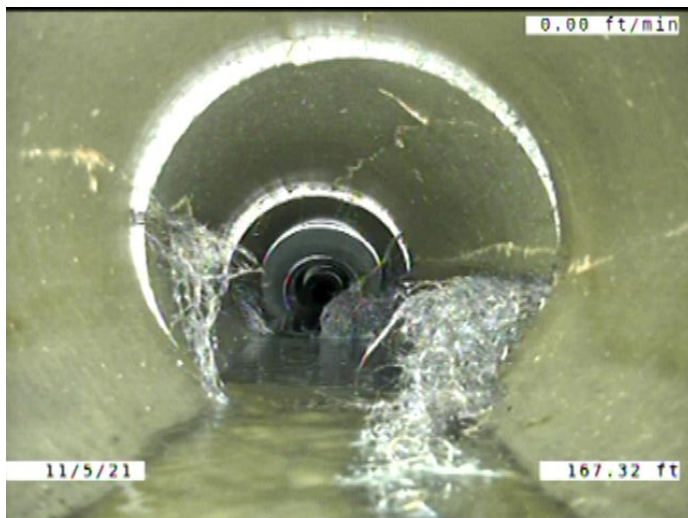
Code: **FM**
Description: **Fracture Multiple**

Distance (ft): **149.7**
Structural Grade: **4**
O&M Grade: **0**
Clock Start/From: **12**
Clock To: **12**
1st Value:
2nd Value:
Value Percent:
Continuous Index: **S07**
Within 8" of Joint: **YES**
Remarks:



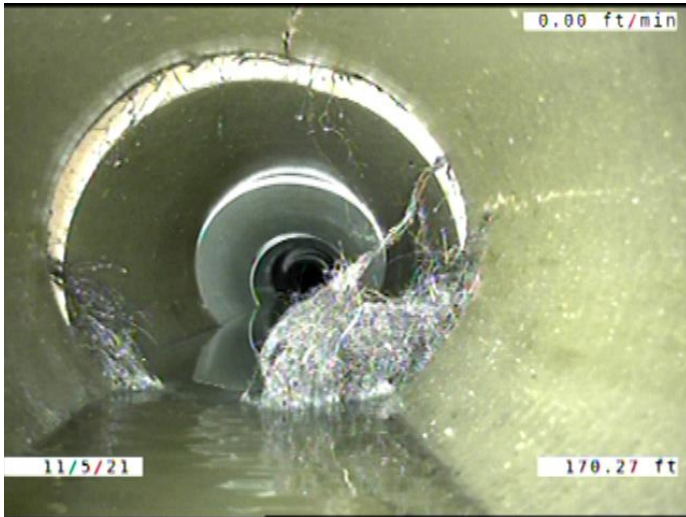
Code: **RFJ**
 Description: **Roots Fine Joint**

Distance (ft): **152.3**
 Structural Grade: **0**
 O&M Grade: **1**
 Clock Start/From: **9**
 Clock To: **3**
 1st Value:
 2nd Value:
 Value Percent:
 Continuous Index: **S08**
 Within 8" of Joint: **YES**
 Remarks:



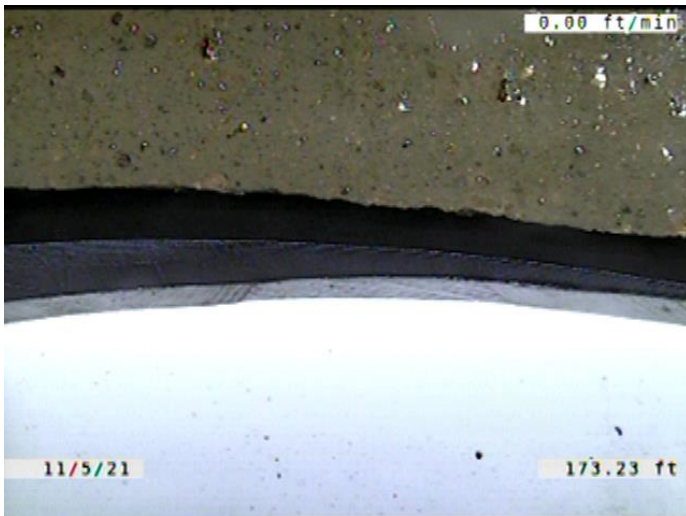
Code: **RMJ**
 Description: **Roots Medium Joint**

Distance (ft): **167.3**
 Structural Grade: **0**
 O&M Grade: **3**
 Clock Start/From: **3**
 Clock To: **9**
 1st Value:
 2nd Value:
 Value Percent: **5.000**
 Continuous Index:
 Within 8" of Joint: **YES**
 Remarks:



Code: **RMJ**
Description: **Roots Medium Joint**

Distance (ft): **170.3**
Structural Grade: **0**
O&M Grade: **3**
Clock Start/From: **7**
Clock To: **5**
1st Value:
2nd Value:
Value Percent: **10.000**
Continuous Index:
Within 8" of Joint: **YES**
Remarks:



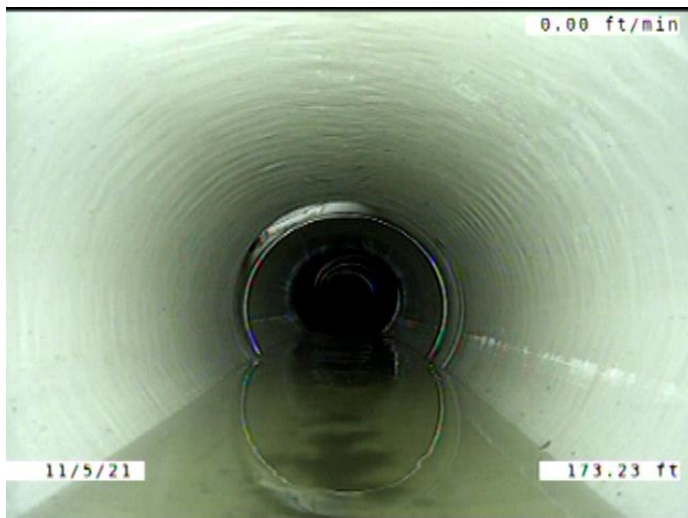
Code: **MMC**
Description: **Miscellaneous Material Change**

Distance (ft): **173.2**
Structural Grade: **0**
O&M Grade: **0**
Clock Start/From:
Clock To:
1st Value:
2nd Value:
Value Percent:
Continuous Index:
Within 8" of Joint: **NO**
Remarks: **VCP TO PVC**



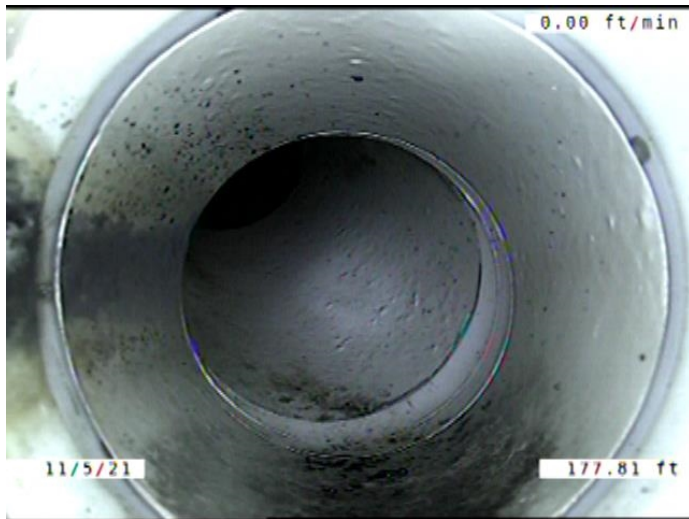
Code: **FM**
Description: **Fracture Multiple**

Distance (ft): **173.2**
Structural Grade: **4**
O&M Grade: **0**
Clock Start/From: **12**
Clock To: **12**
1st Value:
2nd Value:
Value Percent:
Continuous Index: **F07**
Within 8" of Joint: **YES**
Remarks:



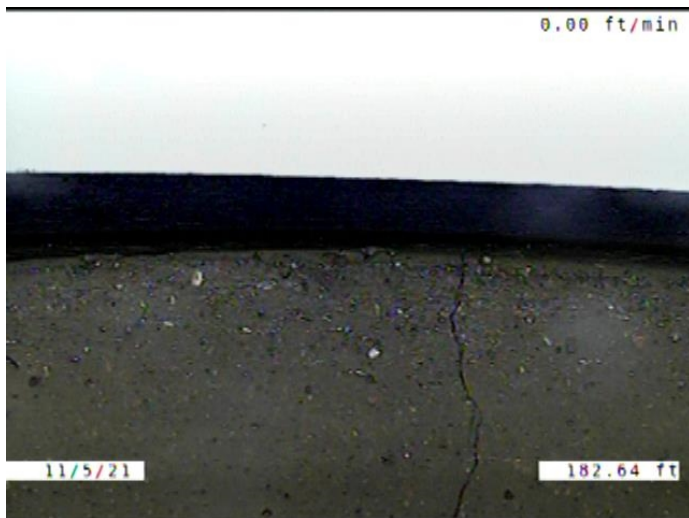
Code: **RFJ**
Description: **Roots Fine Joint**

Distance (ft): **173.2**
Structural Grade: **0**
O&M Grade: **1**
Clock Start/From: **9**
Clock To: **3**
1st Value:
2nd Value:
Value Percent:
Continuous Index: **F08**
Within 8" of Joint: **YES**
Remarks:



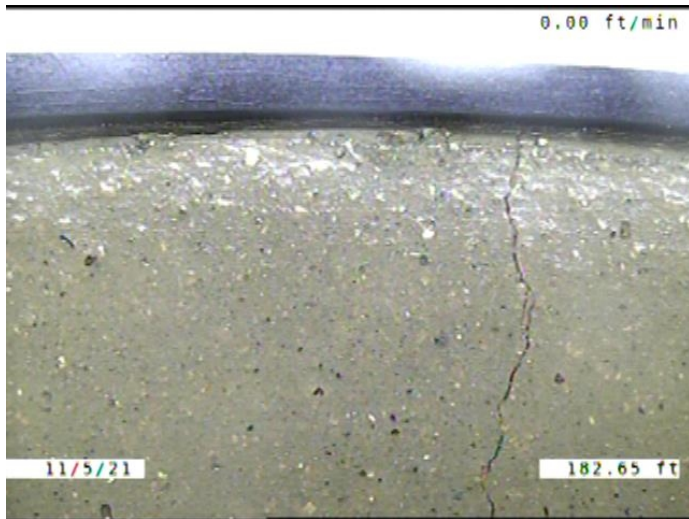
Code: **TF**
Description: **Tap Factory**

Distance (ft): **177.8**
Structural Grade: **0**
O&M Grade: **0**
Clock Start/From: **11**
Clock To:
1st Value: **4.000**
2nd Value:
Value Percent:
Continuous Index:
Within 8" of Joint: **YES**
Remarks: **CONSTANTLY RUNNING WATER.**



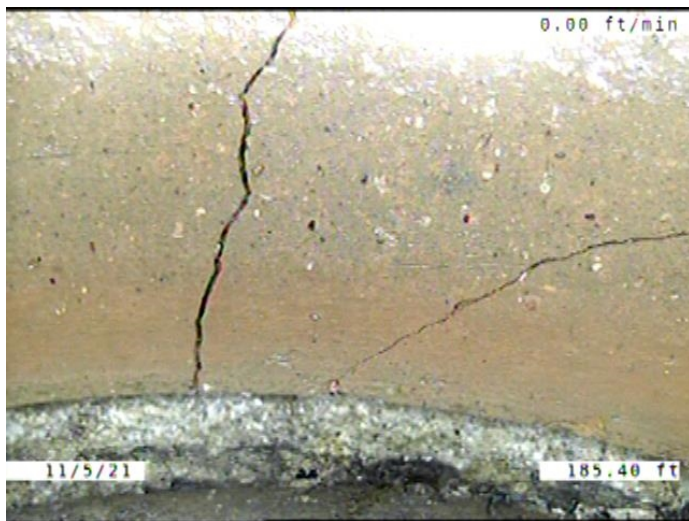
Code: **MMC**
Description: **Miscellaneous Material Change**

Distance (ft): **182.6**
Structural Grade: **0**
O&M Grade: **0**
Clock Start/From:
Clock To:
1st Value:
2nd Value:
Value Percent:
Continuous Index:
Within 8" of Joint: **NO**
Remarks: **PVC TO VCP**



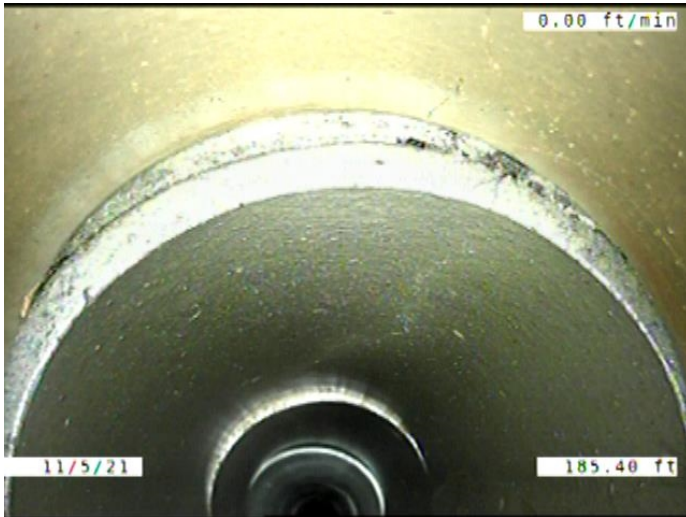
Code: **FM**
Description: **Fracture Multiple**

Distance (ft): **182.6**
Structural Grade: **4**
O&M Grade: **0**
Clock Start/From: **12**
Clock To: **12**
1st Value:
2nd Value:
Value Percent:
Continuous Index: **S10**
Within 8" of Joint: **YES**
Remarks:



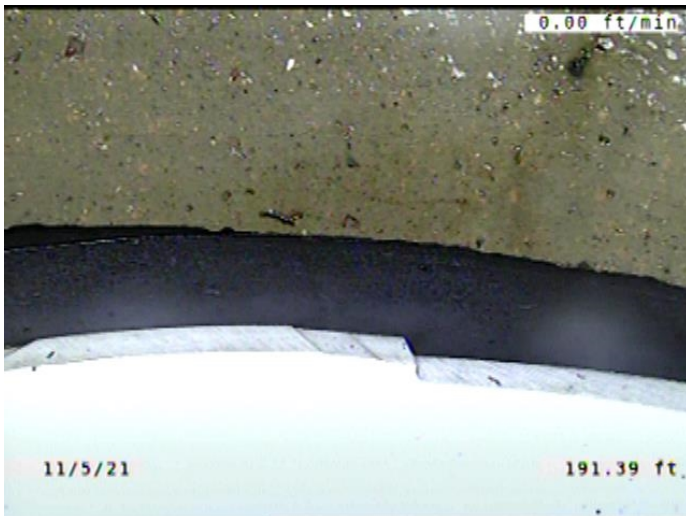
Code: **B**
Description: **Broken**

Distance (ft): **185.4**
Structural Grade: **4**
O&M Grade: **0**
Clock Start/From: **12**
Clock To: **12**
1st Value:
2nd Value:
Value Percent:
Continuous Index:
Within 8" of Joint: **YES**
Remarks:



Code: **JOLD**
Description: **Joint Offset Large Defective**

Distance (ft): **185.4**
Structural Grade: **4**
O&M Grade: **0**
Clock Start/From:
Clock To:
1st Value:
2nd Value:
Value Percent:
Continuous Index:
Within 8" of Joint: **NO**
Remarks:



Code: **MMC**
Description: **Miscellaneous Material Change**

Distance (ft): **191.4**
Structural Grade: **0**
O&M Grade: **0**
Clock Start/From:
Clock To:
1st Value:
2nd Value:
Value Percent:
Continuous Index:
Within 8" of Joint: **NO**
Remarks: **VCP TO PVC**



Code: **JOMD**
Description: **Joint Offset Medium Defective**

Distance (ft): **193.5**
Structural Grade: **3**
O&M Grade: **0**
Clock Start/From:
Clock To:
1st Value:
2nd Value:
Value Percent:
Continuous Index: **F04**
Within 8" of Joint: **NO**
Remarks:



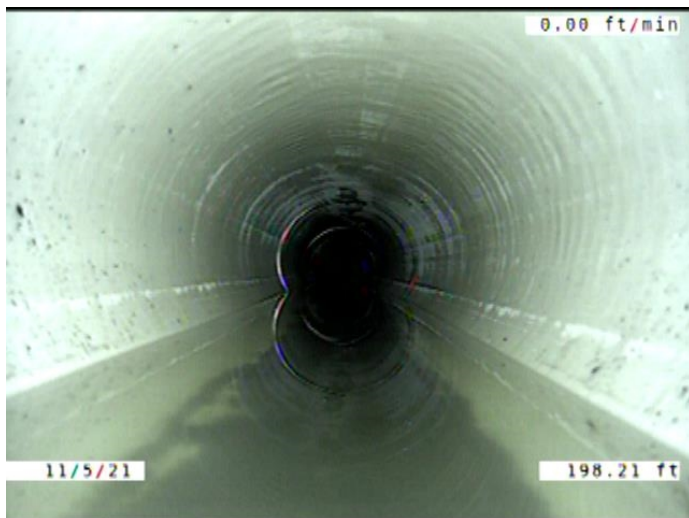
Code: **FM**
Description: **Fracture Multiple**

Distance (ft): **193.5**
Structural Grade: **4**
O&M Grade: **0**
Clock Start/From: **12**
Clock To: **12**
1st Value:
2nd Value:
Value Percent:
Continuous Index: **F10**
Within 8" of Joint: **YES**
Remarks:



Code: **TF**
Description: **Tap Factory**

Distance (ft): **197.1**
Structural Grade: **0**
O&M Grade: **0**
Clock Start/From: **2**
Clock To:
1st Value: **4.000**
2nd Value:
Value Percent:
Continuous Index:
Within 8" of Joint: **YES**
Remarks: **ROOTS GROWING IN THE TAP**



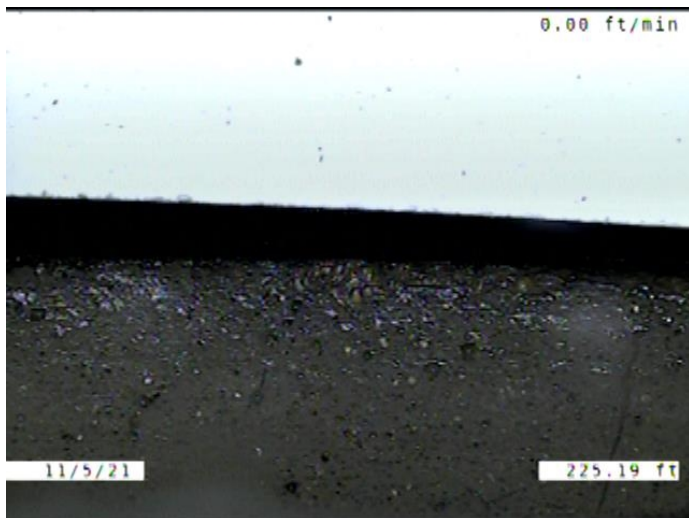
Code: **MWLS**
Description: **Miscellaneous Water Level Sag**

Distance (ft): **198.2**
Structural Grade: **2**
O&M Grade: **0**
Clock Start/From:
Clock To:
1st Value:
2nd Value:
Value Percent: **30.000**
Continuous Index: **S11**
Within 8" of Joint: **NO**
Remarks:



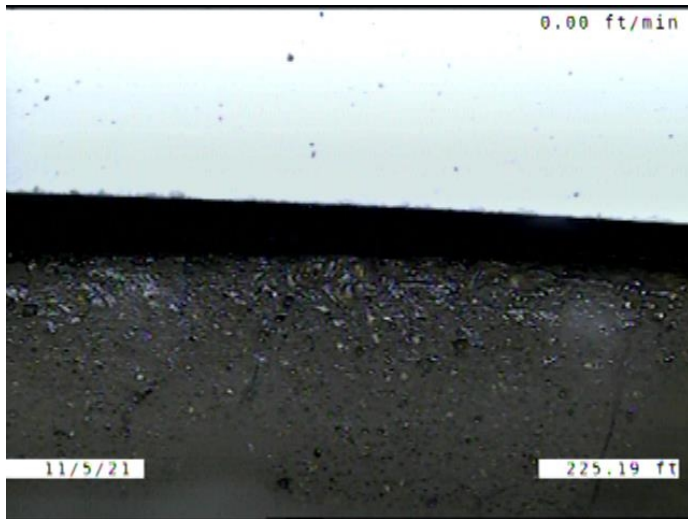
Code: **TF**
Description: **Tap Factory**

Distance (ft): **210.9**
Structural Grade: **0**
O&M Grade: **0**
Clock Start/From: **11**
Clock To:
1st Value: **4.000**
2nd Value:
Value Percent:
Continuous Index:
Within 8" of Joint: **YES**
Remarks: **ROOTS GROWING IN THE TAP**



Code: **MMC**
Description: **Miscellaneous Material Change**

Distance (ft): **225.2**
Structural Grade: **0**
O&M Grade: **0**
Clock Start/From:
Clock To:
1st Value:
2nd Value:
Value Percent:
Continuous Index:
Within 8" of Joint: **NO**
Remarks: **PVC TO VCP**



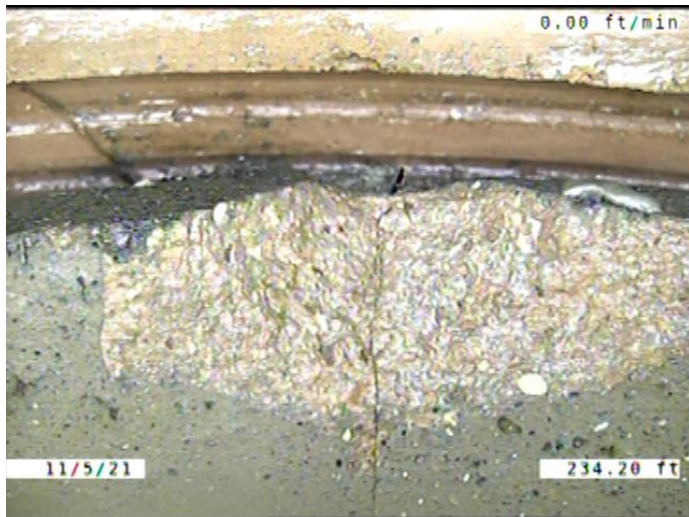
Code: **FM**
Description: **Fracture Multiple**

Distance (ft): **225.2**
Structural Grade: **4**
O&M Grade: **0**
Clock Start/From: **9**
Clock To: **3**
1st Value:
2nd Value:
Value Percent:
Continuous Index: **S12**
Within 8" of Joint: **YES**
Remarks:



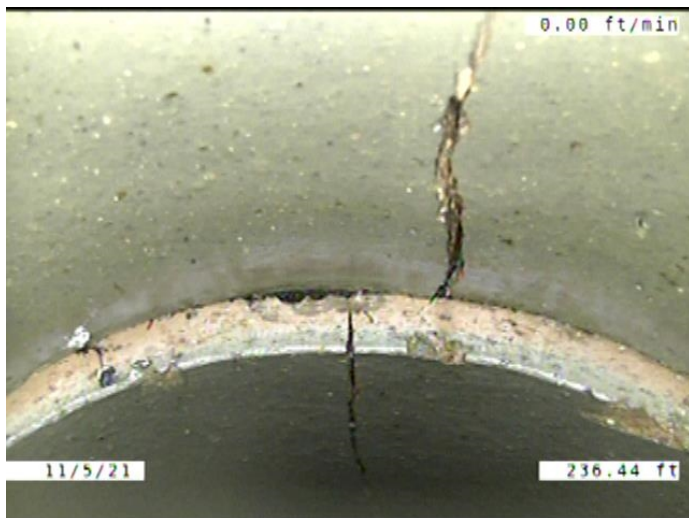
Code: **RFJ**
Description: **Roots Fine Joint**

Distance (ft): **227.9**
Structural Grade: **0**
O&M Grade: **1**
Clock Start/From: **10**
Clock To: **2**
1st Value:
2nd Value:
Value Percent:
Continuous Index:
Within 8" of Joint: **YES**
Remarks:



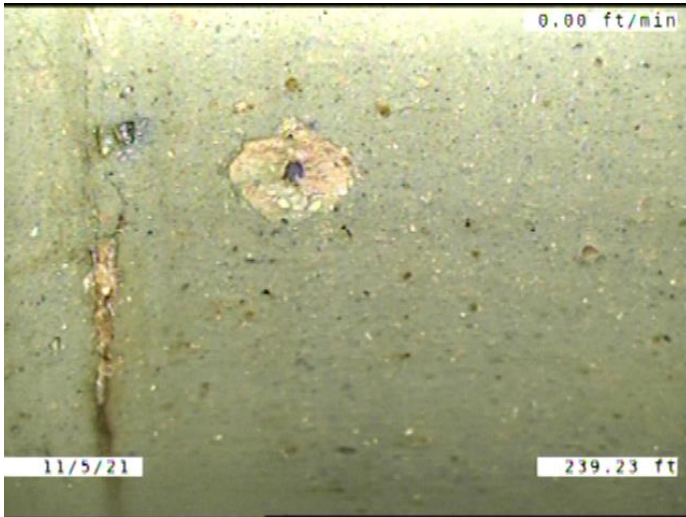
Code: **SZ**
 Description: **Surface Damage Other**

Distance (ft): **234.2**
 Structural Grade: **0**
 O&M Grade: **0**
 Clock Start/From: **11**
 Clock To:
 1st Value:
 2nd Value:
 Value Percent:
 Continuous Index:
 Within 8" of Joint: **YES**
 Remarks: **A PIECE CHIPPED AWAY FROM THE JOINT**



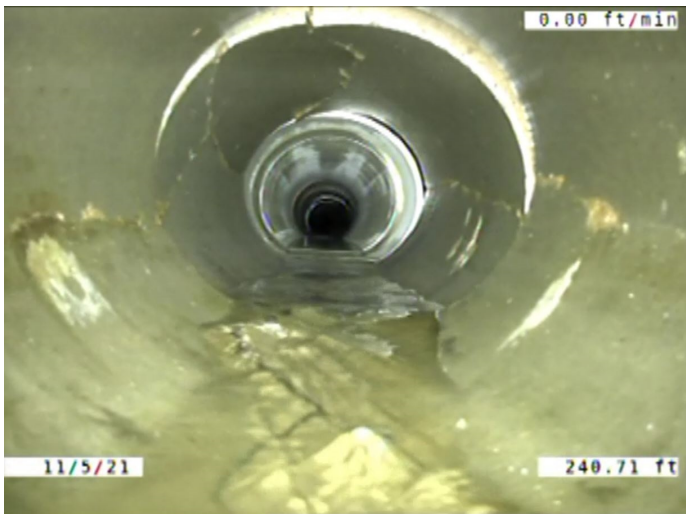
Code: **JOM**
 Description: **Joint Offset Medium**

Distance (ft): **236.4**
 Structural Grade: **3**
 O&M Grade: **0**
 Clock Start/From:
 Clock To:
 1st Value:
 2nd Value:
 Value Percent:
 Continuous Index:
 Within 8" of Joint: **NO**
 Remarks:



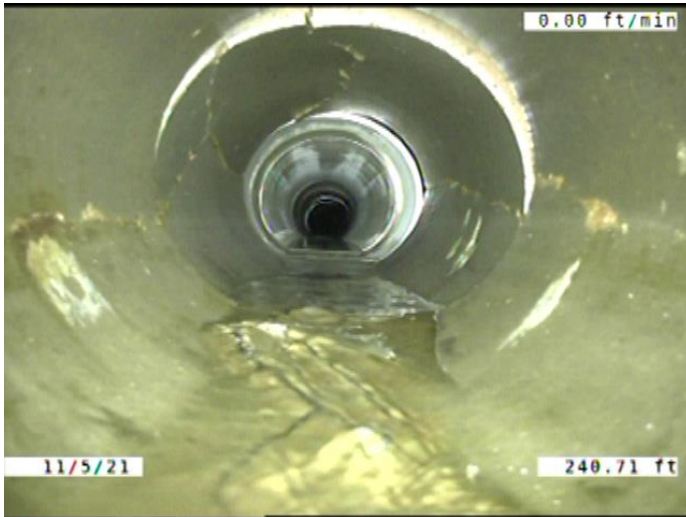
Code: **SSS**
Description: **Surface Damage Surface Spalling**

Distance (ft): **239.2**
Structural Grade: **2**
O&M Grade: **0**
Clock Start/From: **10**
Clock To:
1st Value:
2nd Value:
Value Percent:
Continuous Index:
Within 8" of Joint: **NO**
Remarks:



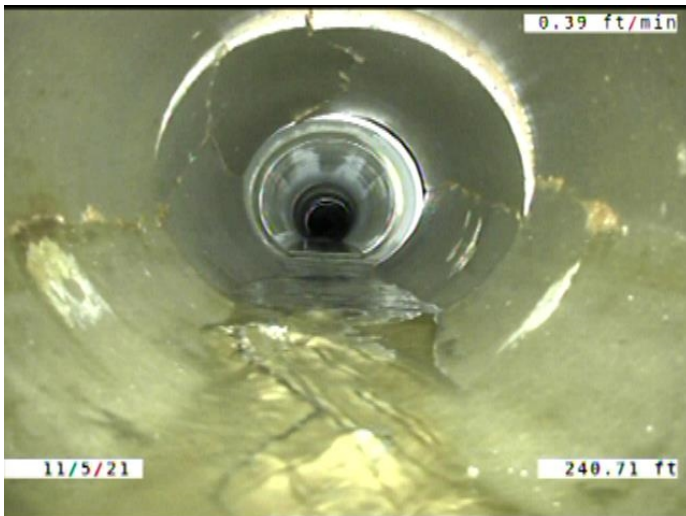
Code: **DR**
Description: **Deformed Rigid**

Distance (ft): **240.7**
Structural Grade: **4**
O&M Grade: **0**
Clock Start/From:
Clock To:
1st Value:
2nd Value:
Value Percent: **5.000**
Continuous Index:
Within 8" of Joint: **NO**
Remarks:



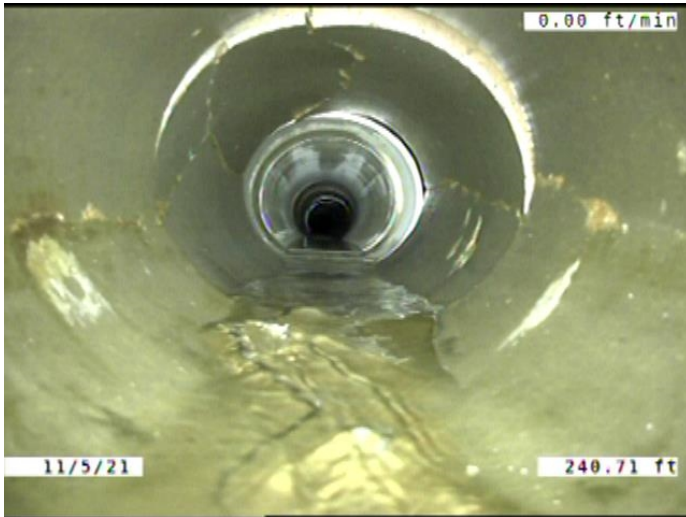
Code: **DSF**
Description: **Deposits Settled Fine**

Distance (ft): **240.7**
Structural Grade: **0**
O&M Grade: **2**
Clock Start/From: **5**
Clock To: **7**
1st Value:
2nd Value:
Value Percent: **5.000**
Continuous Index: **F03**
Within 8" of Joint: **YES**
Remarks:



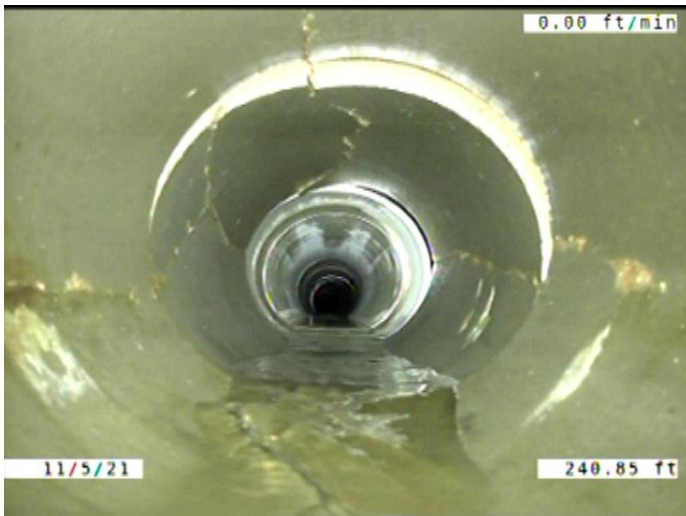
Code: **MWLS**
Description: **Miscellaneous Water Level Sag**

Distance (ft): **240.7**
Structural Grade: **2**
O&M Grade: **0**
Clock Start/From:
Clock To:
1st Value:
2nd Value:
Value Percent: **30.000**
Continuous Index: **F11**
Within 8" of Joint: **NO**
Remarks:



Code: **FM**
Description: **Fracture Multiple**

Distance (ft): **240.7**
Structural Grade: **4**
O&M Grade: **0**
Clock Start/From: **9**
Clock To: **3**
1st Value:
2nd Value:
Value Percent:
Continuous Index: **F12**
Within 8" of Joint: **YES**
Remarks:



Code: **MSA**
Description: **Miscellaneous Survey Abandoned**

Distance (ft): **240.8**
Structural Grade: **0**
O&M Grade: **0**
Clock Start/From:
Clock To:
1st Value:
2nd Value:
Value Percent:
Continuous Index:
Within 8" of Joint: **NO**
Remarks: **MADE IT TO THE POINT OF OVERLAP.
REVERSAL COMPLETE.**