

## Profile/Photo Observation Report

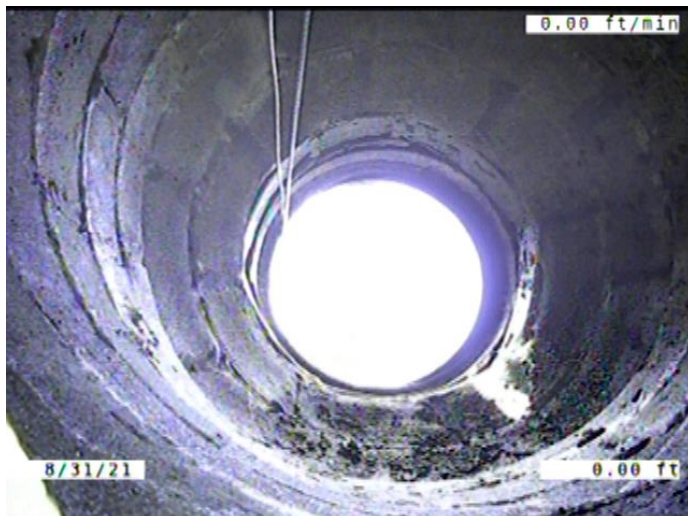


Date:	<b>08/31/2021</b>	Weather:		Coding:	<b>PACP 7.0</b>
Pipe Length (ft):	<b>241.0</b>	Owner:	<b>City of Hobart</b>	Pre Clean:	<b>Light Cleaning</b>
P.O.#:	<b>YES502259</b>	Surveyor:	<b>S. Bucklin</b>	PSR:	<b>P-504-107-106</b>
Customer:	<b>City of Hobart</b>	Clean Date:	<b>08/30/2021</b>	Shape:	<b>C</b>

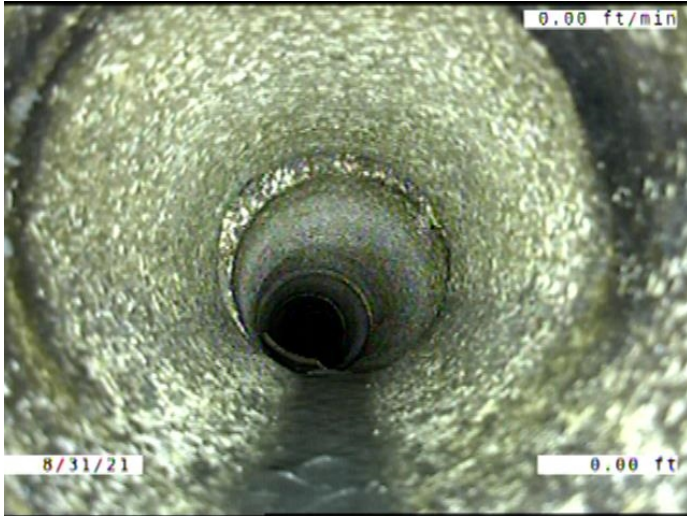
Street:	<b>42nd Avenue</b>	Flow Control:	<b>Not Controlled</b>
City:	<b>Hobart, IN</b>	Year Renewed:	
Location:	<b>Alley</b>	Tape/Media #:	
Purpose:	<b>Routine Assessment</b>	Dia/Height:	<b>8"</b>
Use:	<b>Sanitary Sewage Pipe</b>	Material:	<b>CP</b>
Drain Area:		Lining:	
Category:	<b>NA</b>		
Comment:			
Location Details:		Direction of Survey:	<b>Upstream</b>
US MH:	<b>M-504-106</b>	DS MH:	<b>M-504-107</b>
		Total Length Surveyed (ft):	<b>29.7</b>

O&M Index:	<b>1.75</b>	O&M Quick:	<b>2311</b>	O&M Rating:	<b>7.00</b>
Structural Index:	<b>4.00</b>	Structural Quick:	<b>5141</b>	Structural Rating:	<b>12.00</b>
Overall Index:	<b>2.71</b>	Overall Quick:	<b>5141</b>	Overall Rating:	<b>19.00</b>

	Position	Code	Observation	Video (sec)	Grade
	M-504-107				
	.0	AMH	Manhole	1	NA
	.0	MWL	Miscellaneous Water Level	80	NA
	1.2	FM	Fracture Multiple	163	S 4
	1.2	ISB	Infiltration Stain Barrel	174	M 1
	3.1	JAM	Joint Angular Medium	224	S 3
	7.0	OBM	Obstruction Pipe Material in Invert	274	M 2
	23.5	DSC	Deposits Settled Hard/Compacted	376	M 2
	24.2	OBM	Obstruction Pipe Material in Invert	406	M 2
	26.6	MMC	Miscellaneous Material Change	457	NA
	28.5	TFC	Tap Factory Capped	491	NA
	29.5	X	Collapse	668	S 5
	29.7	MSA	Miscellaneous Survey Abandoned	688	NA
	M-504-106				

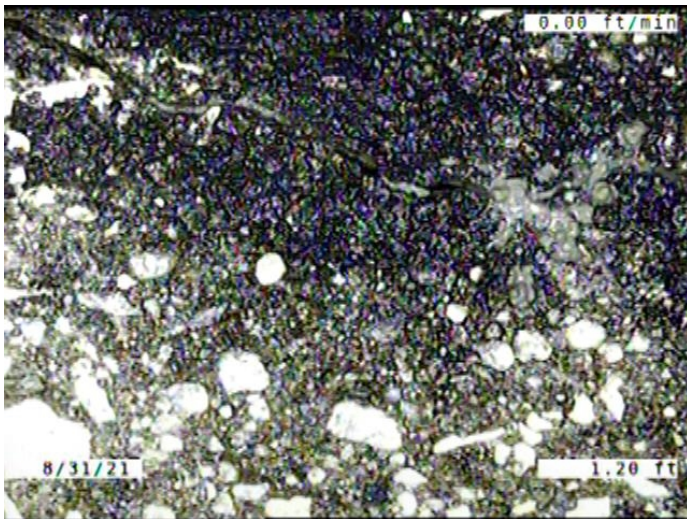


Code: **AMH**  
 Description: **Manhole**  
  
 Distance (ft): **.0**  
 Structural Grade: **0**  
 O&M Grade: **0**  
 Clock Start/From:  
 Clock To:  
 1st Value:  
 2nd Value:  
 Value Percent:  
 Continuous Index:  
 Within 8" of Joint: **NO**  
 Remarks: **M-504-107**



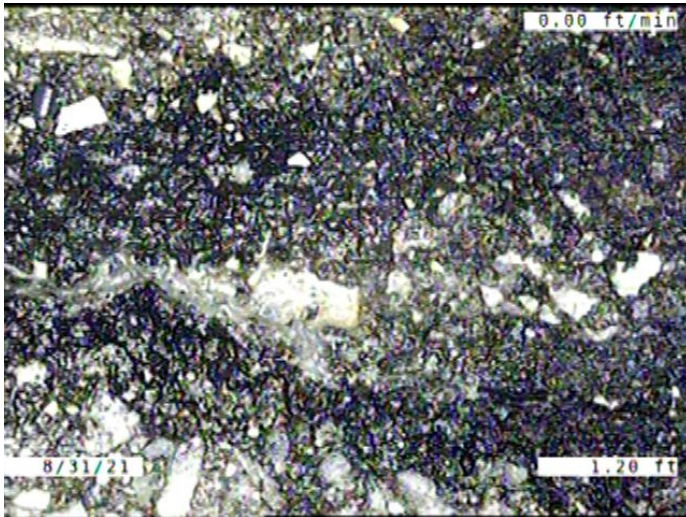
Code:	<b>MWL</b>
Description:	<b>Miscellaneous Water Level</b>
Distance (ft):	<b>.0</b>
Structural Grade:	<b>0</b>
O&M Grade:	<b>0</b>
Clock Start/From:	
Clock To:	
1st Value:	
2nd Value:	
Value Percent:	<b>5.000</b>
Continuous Index:	
Within 8" of Joint:	<b>NO</b>
Remarks:	

---



Code:	<b>FM</b>
Description:	<b>Fracture Multiple</b>
Distance (ft):	<b>1.2</b>
Structural Grade:	<b>4</b>
O&M Grade:	<b>0</b>
Clock Start/From:	<b>7</b>
Clock To:	<b>5</b>
1st Value:	
2nd Value:	
Value Percent:	
Continuous Index:	
Within 8" of Joint:	<b>NO</b>
Remarks:	

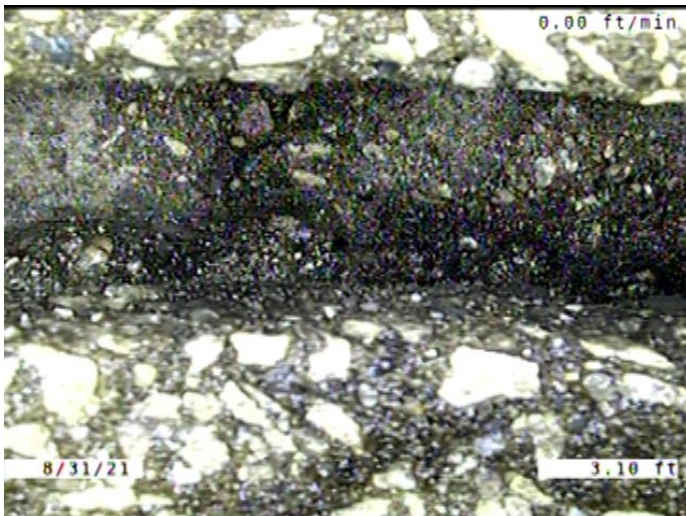
---



Code: **ISB**  
Description: **Infiltration Stain Barrel**

Distance (ft): **1.2**  
Structural Grade: **0**  
O&M Grade: **1**  
Clock Start/From: **7**  
Clock To: **5**  
1st Value:  
2nd Value:  
Value Percent:  
Continuous Index:  
Within 8" of Joint: **NO**  
Remarks:

---

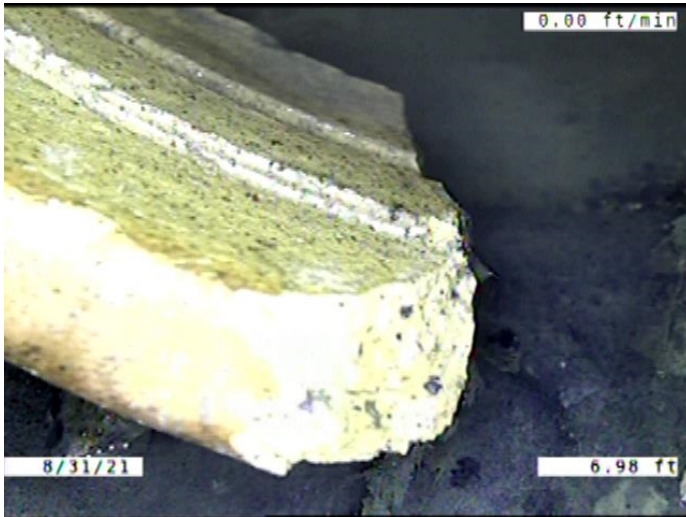


Code: **JAM**  
Description: **Joint Angular Medium**

Distance (ft): **3.1**  
Structural Grade: **3**  
O&M Grade: **0**  
Clock Start/From:  
Clock To:  
1st Value:  
2nd Value:  
Value Percent:  
Continuous Index:  
Within 8" of Joint: **NO**  
Remarks:

---





Code:	<b>OBM</b>
Description:	<b>Obstruction Pipe Material in Invert</b>
Distance (ft):	<b>7.0</b>
Structural Grade:	<b>0</b>
O&M Grade:	<b>2</b>
Clock Start/From:	<b>6</b>
Clock To:	<b>8</b>
1st Value:	
2nd Value:	
Value Percent:	<b>5.000</b>
Continuous Index:	
Within 8" of Joint:	<b>YES</b>
Remarks:	

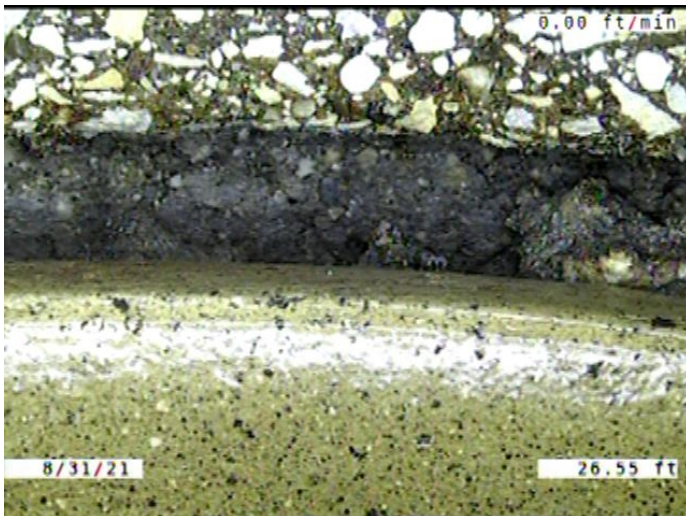


Code:	<b>DSC</b>
Description:	<b>Deposits Settled Hard/Compacted</b>
Distance (ft):	<b>23.5</b>
Structural Grade:	<b>0</b>
O&M Grade:	<b>2</b>
Clock Start/From:	<b>6</b>
Clock To:	
1st Value:	
2nd Value:	
Value Percent:	<b>5.000</b>
Continuous Index:	
Within 8" of Joint:	<b>YES</b>
Remarks:	



Code:	<b>OBM</b>
Description:	<b>Obstruction Pipe Material in Invert</b>
Distance (ft):	<b>24.2</b>
Structural Grade:	<b>0</b>
O&M Grade:	<b>2</b>
Clock Start/From:	<b>6</b>
Clock To:	
1st Value:	
2nd Value:	
Value Percent:	<b>5.000</b>
Continuous Index:	
Within 8" of Joint:	<b>YES</b>
Remarks:	

---



Code:	<b>MMC</b>
Description:	<b>Miscellaneous Material Change</b>
Distance (ft):	<b>26.6</b>
Structural Grade:	<b>0</b>
O&M Grade:	<b>0</b>
Clock Start/From:	
Clock To:	
1st Value:	
2nd Value:	
Value Percent:	
Continuous Index:	
Within 8" of Joint:	<b>NO</b>
Remarks:	<b>CONCRETE TO VCP</b>

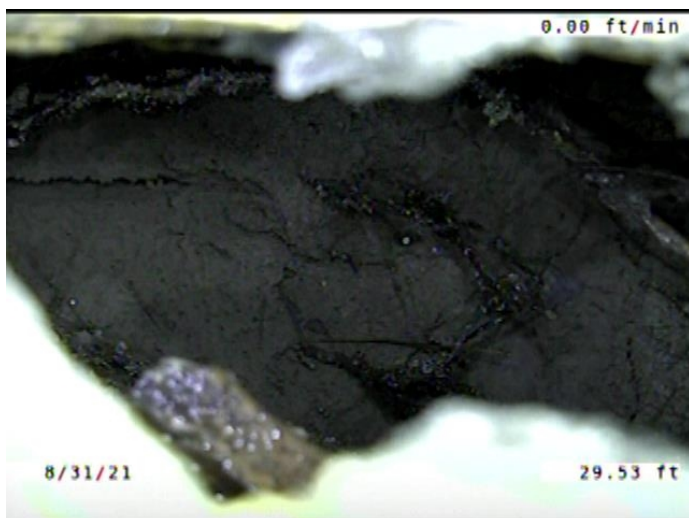
---



Code: **TFC**  
Description: **Tap Factory Capped**

Distance (ft): **28.5**  
Structural Grade: **0**  
O&M Grade: **0**  
Clock Start/From: **11**  
Clock To:  
1st Value: **4.000**  
2nd Value:  
Value Percent:  
Continuous Index:  
Within 8" of Joint: **YES**  
Remarks:

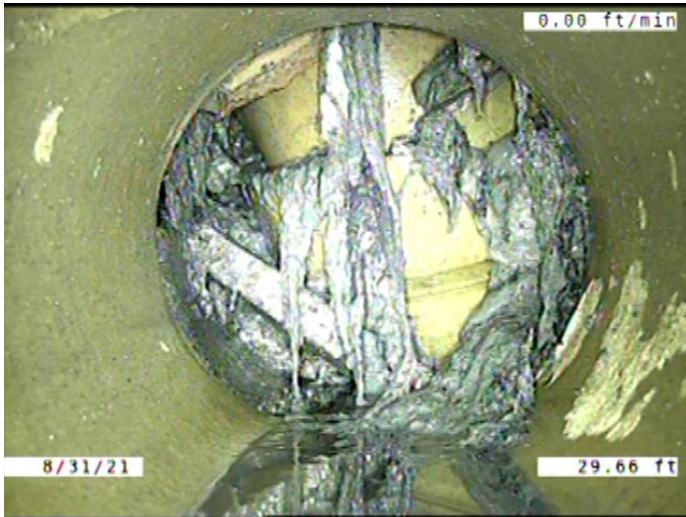
---



Code: **X**  
Description: **Collapse**

Distance (ft): **29.5**  
Structural Grade: **5**  
O&M Grade: **0**  
Clock Start/From:  
Clock To:  
1st Value:  
2nd Value:  
Value Percent: **100.000**  
Continuous Index:  
Within 8" of Joint: **NO**  
Remarks:

---



Code:	<b>MSA</b>
Description:	<b>Miscellaneous Survey Abandoned</b>
Distance (ft):	<b>29.7</b>
Structural Grade:	<b>0</b>
O&M Grade:	<b>0</b>
Clock Start/From:	
Clock To:	
1st Value:	
2nd Value:	
Value Percent:	
Continuous Index:	
Within 8" of Joint:	<b>NO</b>
Remarks:	<b>CAMERA CANT MAKE IT PAST PROTRUDING TAP</b>