

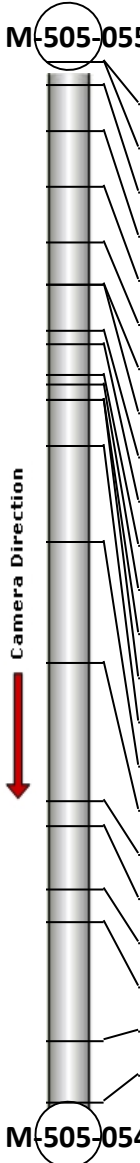
Profile/Photo Observation Report

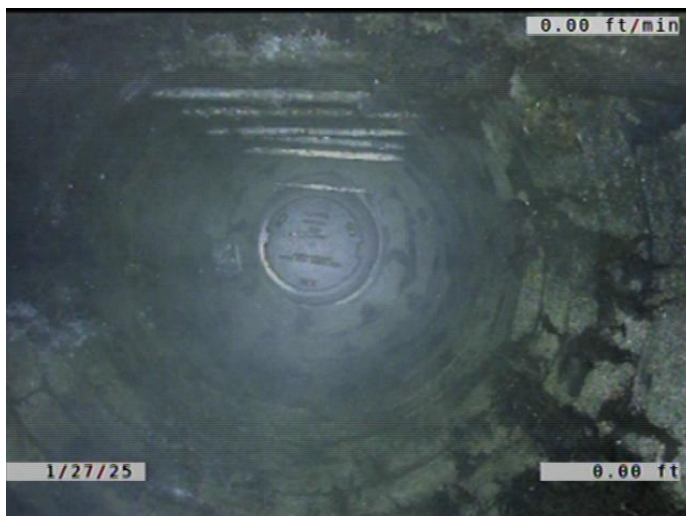


| | | | | | |
|-------------------|-----------------------|-------------|-----------------------|------------|-----------------------|
| Date: | 01/27/2025 | Weather: | | Coding: | PACP 7.0 |
| Pipe Length (ft): | 168.0 | Owner: | City of Hobart | Pre Clean: | Heavy Cleaning |
| P.O.#: | YES502259 | Surveyor: | S. Bucklin | PSR: | P-505-055-054 |
| Customer: | City of Hobart | Clean Date: | 01/13/2025 | Shape: | C |

| | | | |
|-------------------|--|-----------------------------|-----------------------|
| Street: | South Colorado Street | Flow Control: | Not Controlled |
| City: | Hobart, IN | Year Renewed: | |
| Location: | Local rural streets with light traffic, t | Tape/Media #: | |
| Purpose: | Sewer System Evaluation Survey (SS | Dia/Height: | 18" |
| Use: | Sanitary Sewage Pipe | Material: | VCP |
| Drain Area: | | Lining: | None |
| Category: | NA | | |
| Comment: | | | |
| Location Details: | | Direction of Survey: | Downstream |
| US MH: | M-505-055 | DS MH: | M-505-054 |
| | | Total Length Surveyed (ft): | 169.2 |

| | | | | | |
|-------------------|-------------|-------------------|-------------|--------------------|--------------|
| O&M Index: | 2.23 | O&M Quick: | 3428 | O&M Rating: | 29.00 |
| Structural Index: | 1.10 | Structural Quick: | 2119 | Structural Rating: | 11.00 |
| Overall Index: | 1.74 | Overall Quick: | 3429 | Overall Rating: | 40.00 |

| | Position | Code | Observation | Video (sec) | Grade |
|--|-----------|----------|------------------------------------|-------------|-------|
|  | M-505-055 | | | | |
| | .0 | AMH | Manhole | 0 | NA |
| | .0 | MWL | Miscellaneous Water Level | 101 | NA |
| | 3.9 | RTJ(S01) | Roots Tap Joint | 169 | M 2 |
| | 11.1 | SSC | Surface Spalling of Damage Coating | 220 | S 1 |
| | 20.4 | SSC | Surface Spalling of Damage Coating | 286 | S 1 |
| | 29.2 | SSC | Surface Spalling of Damage Coating | 334 | S 1 |
| | 36.2 | TFD | Tap Factory Defective | 506 | M 3 |
| | 36.2 | RML | Roots Medium Lateral | 550 | M 3 |
| | 43.7 | RTJ(F01) | Roots Tap Joint | 677 | M 2 |
| | 45.9 | SSC | Surface Spalling of Damage Coating | 705 | S 1 |
| | 51.0 | SSC | Surface Spalling of Damage Coating | 746 | S 1 |
| | 52.5 | SSC | Surface Spalling of Damage Coating | 774 | S 1 |
| | 54.8 | SSS | Surface Damage Surface Spalling | 821 | S 2 |
| | 55.0 | TBD | Tap Break-in/Hammer Defective | 835 | M 3 |
| | 62.3 | SSC | Surface Spalling of Damage Coating | 879 | S 1 |
| | 78.1 | TFD | Tap Factory Defective | 958 | M 3 |
| | 97.8 | SSC | Surface Spalling of Damage Coating | 1066 | S 1 |
| | 120.1 | TF | Tap Factory | 1187 | NA |
| | 124.2 | RFJ | Roots Fine Joint | 1238 | M 1 |
| | 134.4 | RPR(S02) | Point Repair Replacement | 1325 | NA |
| | 139.9 | RPR(F02) | Point Repair Replacement | 1388 | NA |
| | 159.1 | SSC | Surface Spalling of Damage Coating | 1515 | S 1 |
| | 169.2 | AMH | Manhole | 1717 | NA |
| | M-505-054 | | | | |



Code: **AMH**
Description: **Manhole**

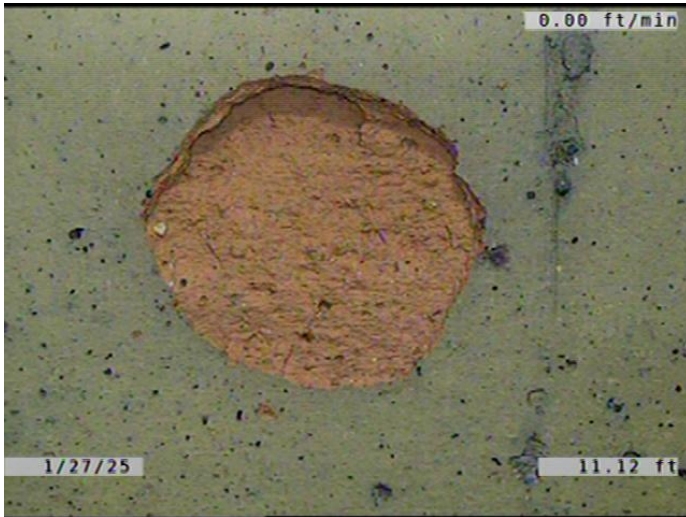
Distance (ft): **.0**
Structural Grade: **0**
O&M Grade: **0**
Clock Start/From:
Clock To:
1st Value:
2nd Value:
Value Percent:
Continuous Index:
Within 8" of Joint: **NO**
Remarks: **M-505-055**



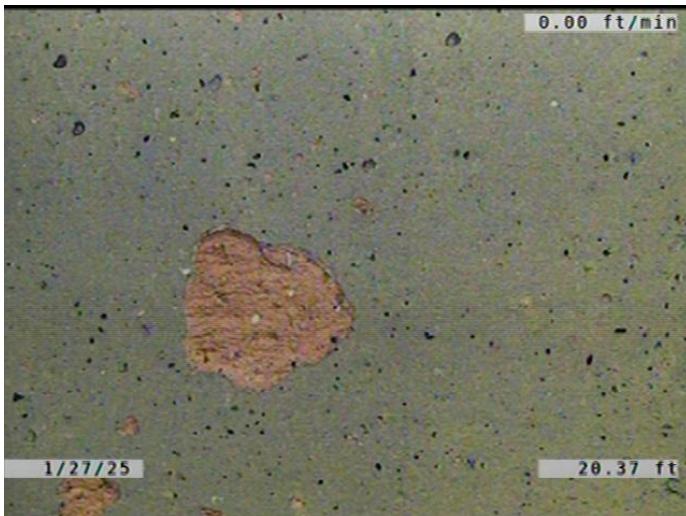
| | |
|---------------------|----------------------------------|
| Code: | MWL |
| Description: | Miscellaneous Water Level |
| Distance (ft): | .0 |
| Structural Grade: | 0 |
| O&M Grade: | 0 |
| Clock Start/From: | |
| Clock To: | |
| 1st Value: | |
| 2nd Value: | |
| Value Percent: | 15.000 |
| Continuous Index: | |
| Within 8" of Joint: | NO |
| Remarks: | |



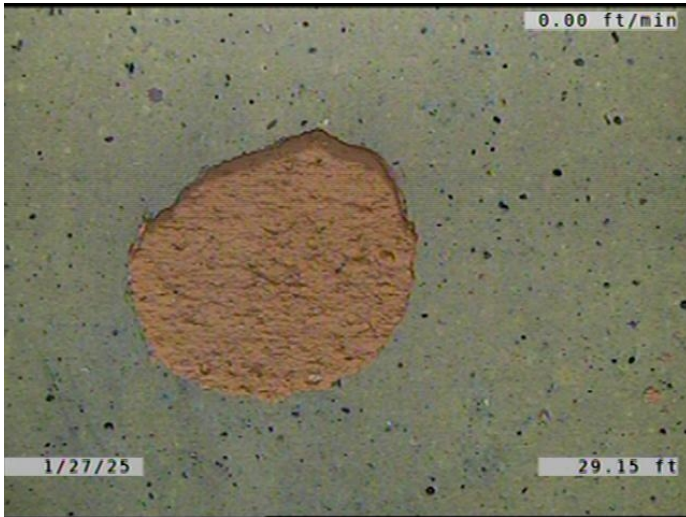
| | |
|---------------------|------------------------|
| Code: | RTJ |
| Description: | Roots Tap Joint |
| Distance (ft): | 3.9 |
| Structural Grade: | 0 |
| O&M Grade: | 2 |
| Clock Start/From: | 8 |
| Clock To: | 4 |
| 1st Value: | |
| 2nd Value: | |
| Value Percent: | 5.000 |
| Continuous Index: | S01 |
| Within 8" of Joint: | YES |
| Remarks: | |



| | |
|---------------------|---|
| Code: | SSC |
| Description: | Surface Spalling of Damage Coating |
| Distance (ft): | 11.1 |
| Structural Grade: | 1 |
| O&M Grade: | 0 |
| Clock Start/From: | 10 |
| Clock To: | 12 |
| 1st Value: | |
| 2nd Value: | |
| Value Percent: | |
| Continuous Index: | |
| Within 8" of Joint: | YES |
| Remarks: | |



| | |
|---------------------|---|
| Code: | SSC |
| Description: | Surface Spalling of Damage Coating |
| Distance (ft): | 20.4 |
| Structural Grade: | 1 |
| O&M Grade: | 0 |
| Clock Start/From: | 11 |
| Clock To: | 3 |
| 1st Value: | |
| 2nd Value: | |
| Value Percent: | |
| Continuous Index: | |
| Within 8" of Joint: | YES |
| Remarks: | |



Code: **SSC**
Description: **Surface Spalling of Damage Coating**

Distance (ft): **29.2**
Structural Grade: **1**
O&M Grade: **0**
Clock Start/From: **12**
Clock To:
1st Value:
2nd Value:
Value Percent:
Continuous Index:
Within 8" of Joint: **YES**
Remarks:



Code: **TFD**
Description: **Tap Factory Defective**

Distance (ft): **36.2**
Structural Grade: **0**
O&M Grade: **3**
Clock Start/From: **11**
Clock To:
1st Value: **6.000**
2nd Value:
Value Percent:
Continuous Index:
Within 8" of Joint: **YES**
Remarks: **SERVICE IS PVC. TAP IS VCP. ROOTS GROWING THROUGH THE SADDLE/**

| | |
|---------------------|--|
| Code: | RML |
| Description: | Roots Medium Lateral |
| Distance (ft): | 36.2 |
| Structural Grade: | 0 |
| O&M Grade: | 3 |
| Clock Start/From: | 10 |
| Clock To: | 12 |
| 1st Value: | |
| 2nd Value: | |
| Value Percent: | 25.000 |
| Continuous Index: | |
| Within 8" of Joint: | NO |
| Remarks: | ROOTS GROWING THROUGH THE SADDLE/ FERNCO CONNECTION INT |

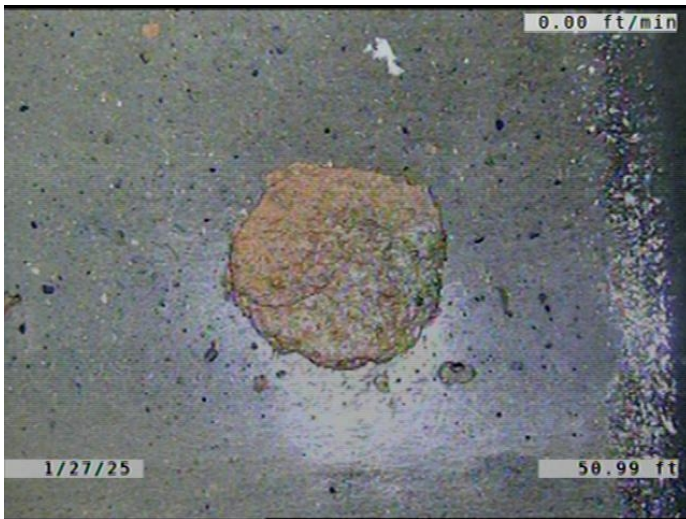


| | |
|---------------------|------------------------|
| Code: | RTJ |
| Description: | Roots Tap Joint |
| Distance (ft): | 43.7 |
| Structural Grade: | 0 |
| O&M Grade: | 2 |
| Clock Start/From: | 8 |
| Clock To: | 4 |
| 1st Value: | |
| 2nd Value: | |
| Value Percent: | 5.000 |
| Continuous Index: | F01 |
| Within 8" of Joint: | YES |
| Remarks: | |



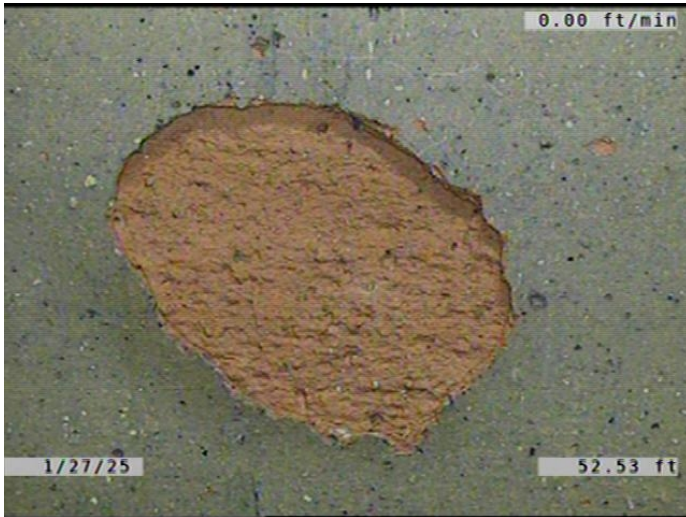
Code: **SSC**
Description: **Surface Spalling of Damage Coating**

Distance (ft): **45.9**
Structural Grade: **1**
O&M Grade: **0**
Clock Start/From: **8**
Clock To:
1st Value:
2nd Value:
Value Percent:
Continuous Index:
Within 8" of Joint: **YES**
Remarks:

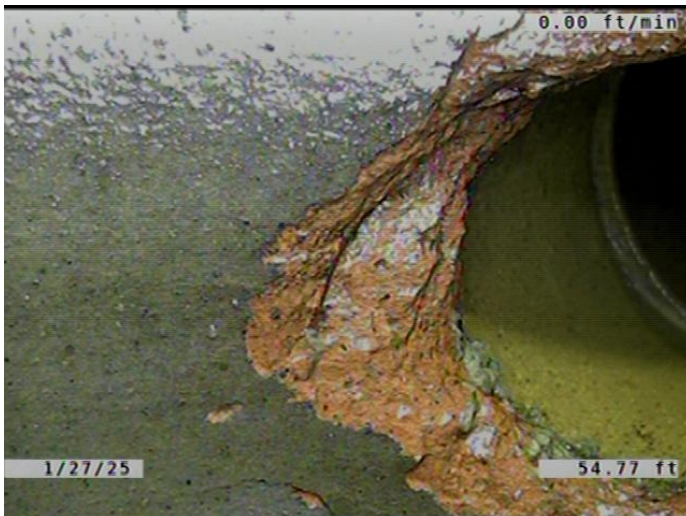


Code: **SSC**
Description: **Surface Spalling of Damage Coating**

Distance (ft): **51.0**
Structural Grade: **1**
O&M Grade: **0**
Clock Start/From: **8**
Clock To:
1st Value:
2nd Value:
Value Percent:
Continuous Index:
Within 8" of Joint: **YES**
Remarks:



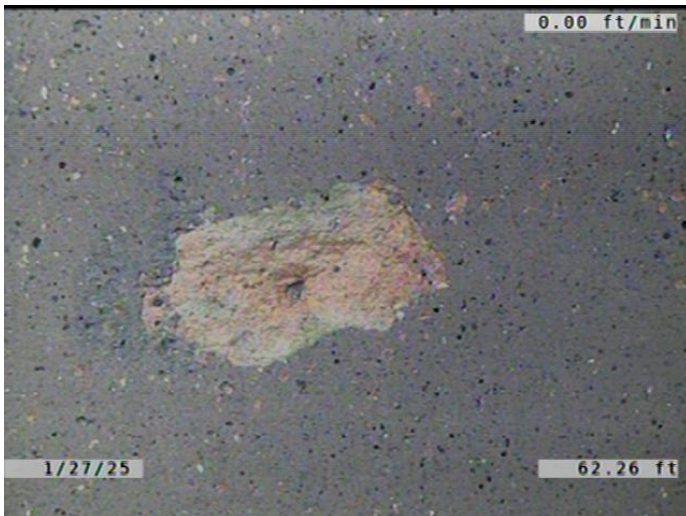
| | |
|---------------------|---|
| Code: | SSC |
| Description: | Surface Spalling of Damage Coating |
| Distance (ft): | 52.5 |
| Structural Grade: | 1 |
| O&M Grade: | 0 |
| Clock Start/From: | 11 |
| Clock To: | |
| 1st Value: | |
| 2nd Value: | |
| Value Percent: | |
| Continuous Index: | |
| Within 8" of Joint: | YES |
| Remarks: | |



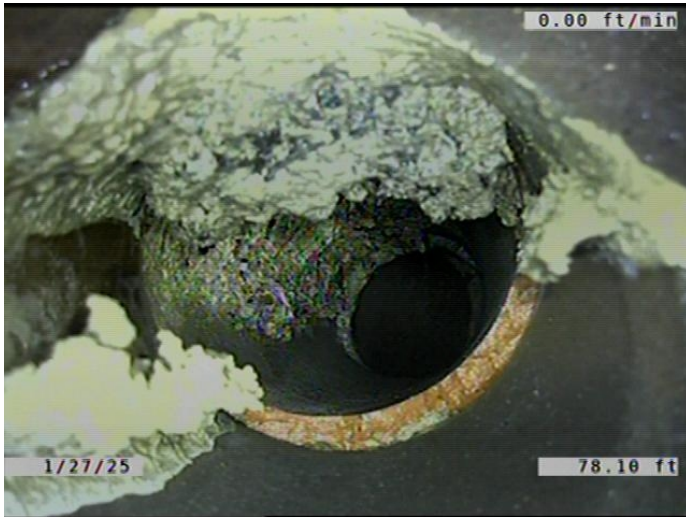
| | |
|---------------------|--|
| Code: | SSS |
| Description: | Surface Damage Surface Spalling |
| Distance (ft): | 54.8 |
| Structural Grade: | 2 |
| O&M Grade: | 0 |
| Clock Start/From: | 11 |
| Clock To: | 1 |
| 1st Value: | |
| 2nd Value: | |
| Value Percent: | |
| Continuous Index: | |
| Within 8" of Joint: | NO |
| Remarks: | |



| | |
|---------------------|--|
| Code: | TBD |
| Description: | Tap Break-in/Hammer Defective |
| Distance (ft): | 55.0 |
| Structural Grade: | 0 |
| O&M Grade: | 3 |
| Clock Start/From: | 12 |
| Clock To: | |
| 1st Value: | 6.000 |
| 2nd Value: | |
| Value Percent: | |
| Continuous Index: | |
| Within 8" of Joint: | YES |
| Remarks: | CONSTANTLY RUNNING WATER. SERVICE COMES IN FROM THE RIGHT |



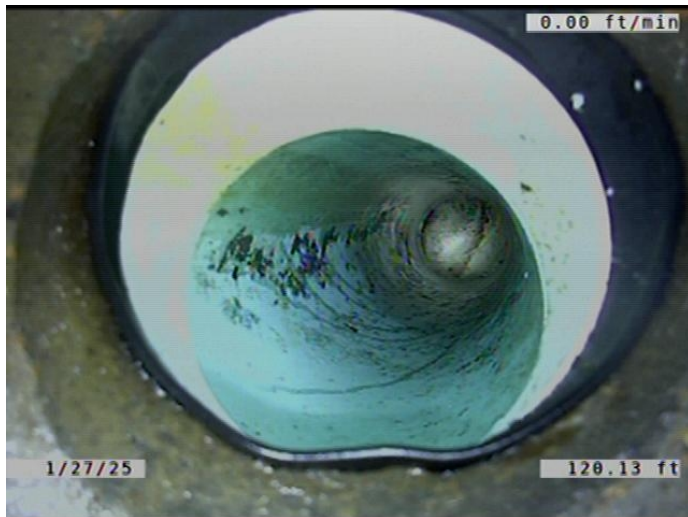
| | |
|---------------------|---|
| Code: | SSC |
| Description: | Surface Spalling of Damage Coating |
| Distance (ft): | 62.3 |
| Structural Grade: | 1 |
| O&M Grade: | 0 |
| Clock Start/From: | 9 |
| Clock To: | 4 |
| 1st Value: | |
| 2nd Value: | |
| Value Percent: | |
| Continuous Index: | |
| Within 8" of Joint: | YES |
| Remarks: | |



| | |
|---------------------|--|
| Code: | TFD |
| Description: | Tap Factory Defective |
| Distance (ft): | 78.1 |
| Structural Grade: | 0 |
| O&M Grade: | 3 |
| Clock Start/From: | 11 |
| Clock To: | |
| 1st Value: | 6.000 |
| 2nd Value: | |
| Value Percent: | |
| Continuous Index: | |
| Within 8" of Joint: | YES |
| Remarks: | CONSTANTLY DRIPPING WATER. ENCrustATION COMING DOWN THE |

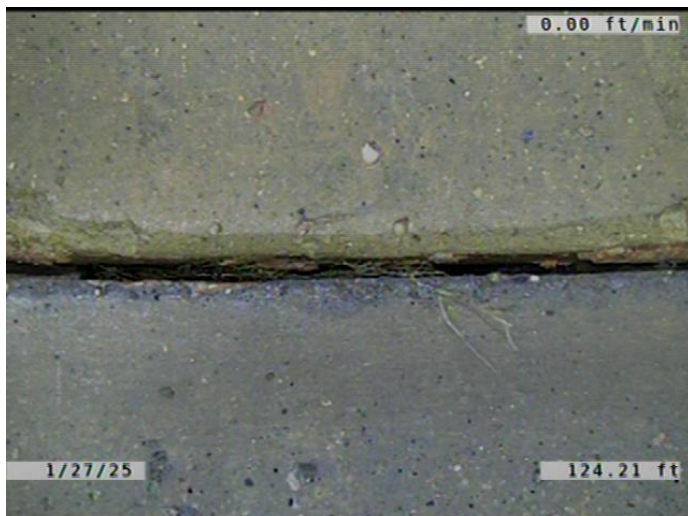


| | |
|---------------------|---|
| Code: | SSC |
| Description: | Surface Spalling of Damage Coating |
| Distance (ft): | 97.8 |
| Structural Grade: | 1 |
| O&M Grade: | 0 |
| Clock Start/From: | 8 |
| Clock To: | 4 |
| 1st Value: | |
| 2nd Value: | |
| Value Percent: | |
| Continuous Index: | |
| Within 8" of Joint: | YES |
| Remarks: | |



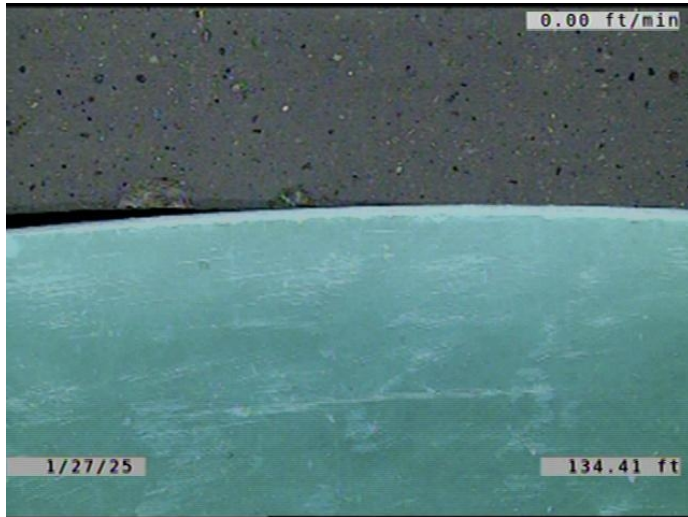
Code: **TF**
Description: **Tap Factory**

Distance (ft): **120.1**
Structural Grade: **0**
O&M Grade: **0**
Clock Start/From: **11**
Clock To:
1st Value: **6.000**
2nd Value:
Value Percent:
Continuous Index:
Within 8" of Joint: **YES**
Remarks: **SERVICE IS PVC. TAP IS VCP.**



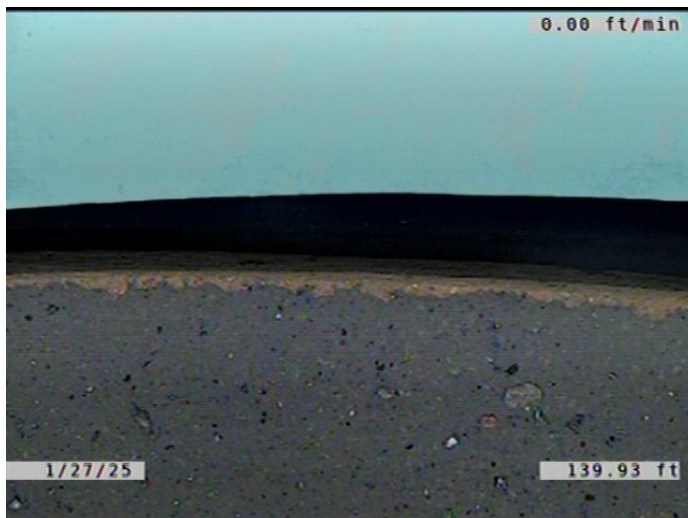
Code: **RFJ**
Description: **Roots Fine Joint**

Distance (ft): **124.2**
Structural Grade: **0**
O&M Grade: **1**
Clock Start/From: **8**
Clock To: **11**
1st Value:
2nd Value:
Value Percent:
Continuous Index:
Within 8" of Joint: **YES**
Remarks:



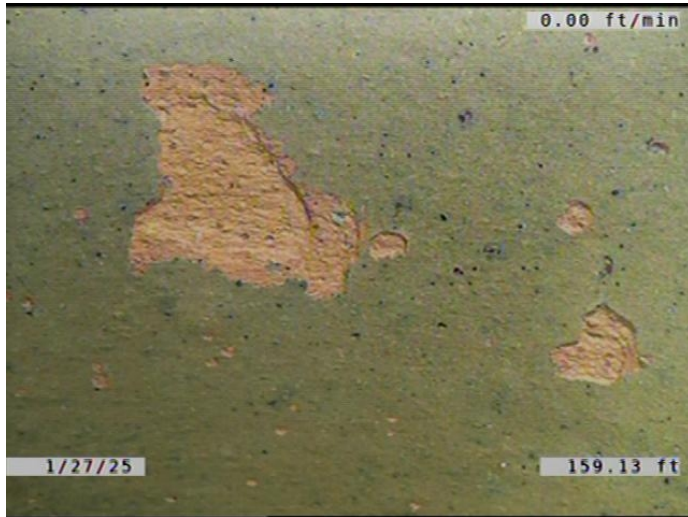
Code: **RPR**
Description: **Point Repair Replacement**

Distance (ft): **134.4**
Structural Grade: **0**
O&M Grade: **0**
Clock Start/From:
Clock To:
1st Value:
2nd Value:
Value Percent:
Continuous Index: **S02**
Within 8" of Joint: **YES**
Remarks: **REPLACED WITH PVC.**

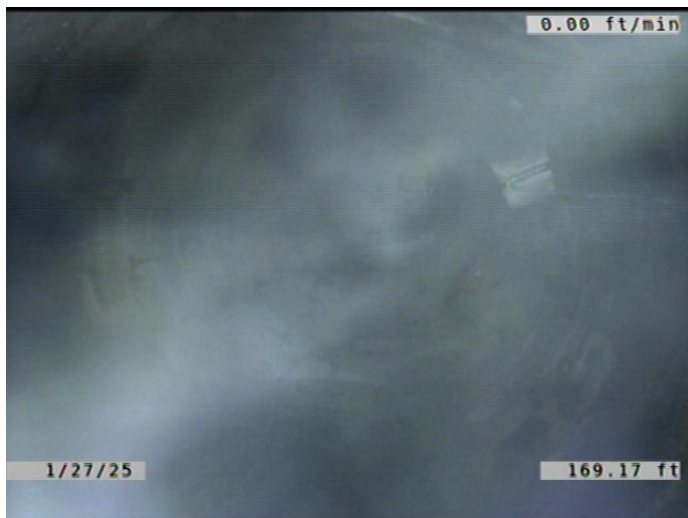


Code: **RPR**
Description: **Point Repair Replacement**

Distance (ft): **139.9**
Structural Grade: **0**
O&M Grade: **0**
Clock Start/From:
Clock To:
1st Value:
2nd Value:
Value Percent:
Continuous Index: **F02**
Within 8" of Joint: **YES**
Remarks: **REPLACED WITH PVC.**



| | |
|---------------------|---|
| Code: | SSC |
| Description: | Surface Spalling of Damage Coating |
| Distance (ft): | 159.1 |
| Structural Grade: | 1 |
| O&M Grade: | 0 |
| Clock Start/From: | 8 |
| Clock To: | 12 |
| 1st Value: | |
| 2nd Value: | |
| Value Percent: | |
| Continuous Index: | |
| Within 8" of Joint: | YES |
| Remarks: | |



| | |
|---------------------|------------------|
| Code: | AMH |
| Description: | Manhole |
| Distance (ft): | 169.2 |
| Structural Grade: | 0 |
| O&M Grade: | 0 |
| Clock Start/From: | |
| Clock To: | |
| 1st Value: | |
| 2nd Value: | |
| Value Percent: | |
| Continuous Index: | |
| Within 8" of Joint: | NO |
| Remarks: | M-505-054 |