


## Profile/Photo Observation Report



Date:	<b>03/29/2018</b>	Weather:		Coding:	<b>PACP 6.0</b>
Pipe Length (ft):	<b>118.4</b>	Owner:	<b>NA</b>	Pre Clean:	<b>No Pre-Cleaning</b>
P.O.#:		Surveyor:	<b>Jen Costello</b>	PSR:	<b>P-507-033-032</b>
Customer:		Clean Date:	<b>01/01/1900</b>	Shape:	<b>C</b>

Street:	<b>ALLEY BETWEEN S DECATUR ST &amp; S</b>	Flow Control:	<b>Not Controlled</b>
City:	<b>Hobart, IN</b>	Year Renewed:	
Location:	<b>Yard</b>	Tape/Media #:	
Purpose:	<b>Routine Assessment</b>	Dia/Height:	<b>10"</b>
Use:	<b>Sanitary</b>	Material:	<b>VCP</b>
Drain Area:	<b>NA</b>	Lining:	
Category:	<b>NA</b>		
Comment:	<b>Flow direction wrong</b>		
Location Details:		Direction of Survey:	<b>Upstream</b>
US MH:	<b>M-507-032</b>	DS MH:	<b>M-507-033</b>
		Total Length Surveyed (ft):	<b>136.4</b>

O&M Index:	<b>2.00</b>	O&M Quick:	<b>2100</b>	O&M Rating:	<b>2.00</b>
Structural Index:	<b>3.00</b>	Structural Quick:	<b>3100</b>	Structural Rating:	<b>3.00</b>
Overall Index:	<b>2.50</b>	Overall Quick:	<b>3121</b>	Overall Rating:	<b>5.00</b>

	Position	Code	Observation	Video (sec)	Grade
					
	.0	AMH	Manhole	10	NA
	.0	MWL	Water Level	21	NA
	19.7	TFA	Tap Factory Active	73	NA
	51.5	TFA	Tap Factory Active	150	NA
	78.9	TFA	Tap Factory Active	219	NA
	130.7	CM	Crack Multiple	335	S 3
	134.4	DAE	Deposits Attached Encrustation	354	M 2
	136.4	AMH	Manhole	369	NA
<div> <div>Code:</div> <div>AMH</div> </div> <div> <div>Description:</div> <div>Manhole</div> </div> <div> <div>Distance (ft):</div> <div>.0</div> </div> <div> <div>Structural Grade:</div> <div>0</div> </div> <div> <div>O&amp;M Grade:</div> <div>0</div> </div> <div> <div>Clock Start/From:</div> <div></div> </div> <div> <div>Clock To:</div> <div></div> </div> <div> <div>1st Value:</div> <div></div> </div> <div> <div>2nd Value:</div> <div></div> </div> <div> <div>Value Percent:</div> <div></div> </div> <div> <div>Continuous Index:</div> <div></div> </div> <div> <div>Within 8" of Joint:</div> <div>NO</div> </div> <div> <div>Remarks:</div> <div>M-507-033</div> </div>					



---

Code:	<b>MWL</b>
Description:	<b>Water Level</b>



Distance (ft):	<b>.0</b>
Structural Grade:	<b>0</b>
O&M Grade:	<b>0</b>
Clock Start/From:	
Clock To:	
1st Value:	
2nd Value:	
Value Percent:	<b>5.000</b>
Continuous Index:	
Within 8" of Joint:	<b>NO</b>
Remarks:	

---

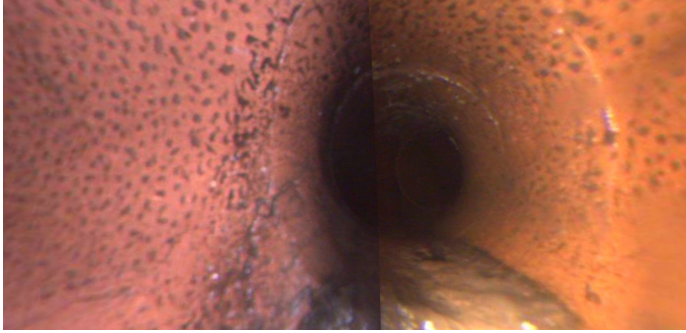
Code:	<b>TFA</b>
Description:	<b>Tap Factory Active</b>



Distance (ft):	<b>19.7</b>
Structural Grade:	<b>0</b>
O&M Grade:	<b>0</b>
Clock Start/From:	<b>9</b>
Clock To:	
1st Value:	<b>4.000</b>
2nd Value:	
Value Percent:	
Continuous Index:	
Within 8" of Joint:	
Remarks:	

---

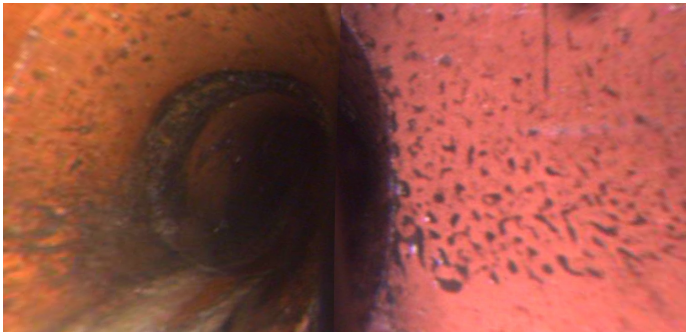
Code: **TFA**  
Description: **Tap Factory Active**



Distance (ft): **51.5**  
Structural Grade: **0**  
O&M Grade: **0**  
Clock Start/From: **3**  
Clock To:  
1st Value: **4.000**  
2nd Value:  
Value Percent:  
Continuous Index:  
Within 8" of Joint:  
Remarks:

---

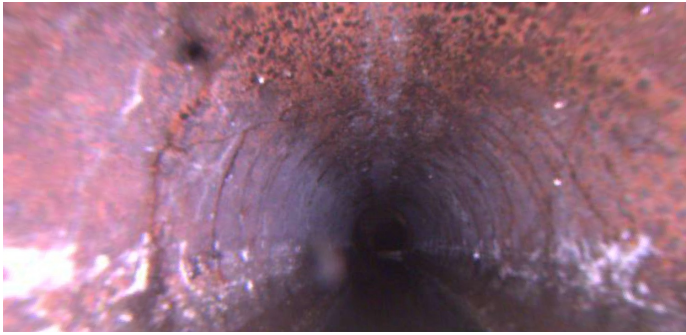
Code: **TFA**  
Description: **Tap Factory Active**



Distance (ft): **78.9**  
Structural Grade: **0**  
O&M Grade: **0**  
Clock Start/From: **9**  
Clock To:  
1st Value: **4.000**  
2nd Value:  
Value Percent:  
Continuous Index:  
Within 8" of Joint:  
Remarks:

---

Code: **CM**  
Description: **Crack Multiple**



Distance (ft): **130.7**  
Structural Grade: **3**  
O&M Grade: **0**  
Clock Start/From: **8**  
Clock To: **4**  
1st Value:  
2nd Value:  
Value Percent:  
Continuous Index:  
Within 8" of Joint:  
Remarks:

---

Code: **DAE**  
Description: **Deposits Attached Encrustation**



Distance (ft): **134.4**  
Structural Grade: **0**  
O&M Grade: **2**  
Clock Start/From: **8**  
Clock To: **4**  
1st Value:  
2nd Value:  
Value Percent: **10.000**  
Continuous Index:  
Within 8" of Joint:  
Remarks: **AT MH**

---



Code:	AMH
Description:	Manhole
Distance (ft):	136.4
Structural Grade:	0
O&M Grade:	0
Clock Start/From:	
Clock To:	
1st Value:	
2nd Value:	
Value Percent:	
Continuous Index:	
Within 8" of Joint:	NO
Remarks:	M-507-032