

Profile/Photo Observation Report



| | | | | | |
|-------------------|-------------------|-------------|-----------------------|------------|------------------------|
| Date: | 04/18/2018 | Weather: | | Coding: | PACP 4.2 |
| Pipe Length (ft): | 152.4 | Owner: | City of Hobart | Pre Clean: | No Pre-Cleaning |
| P.O.#: | 2004 | Surveyor: | SAN | PSR: | P-804-033-030 |
| Customer: | Red Zone | Clean Date: | | Shape: | C |

| | | | |
|-------------------|------------------------------|-----------------------------|-----------------------|
| Street: | N Hobart Rd | Flow Control: | Not Controlled |
| City: | Hobart In | Year Renewed: | |
| Location: | Easement/Right of Way | Tape/Media #: | Deliverable 1 |
| Purpose: | Routine Assessment | Dia/Height: | 18" |
| Use: | Sanitary | Material: | VCP |
| Drain Area: | Northeast | Lining: | |
| Category: | NA | | |
| Comment: | 415-1 | | |
| Location Details: | Grass between homes | Direction of Survey: | Upstream |
| US MH: | M-804-033 | DS MH: | M-804-030 |
| | | Total Length Surveyed (ft): | 152.4 |

| | | | | | |
|-------------------|-------------|-------------------|-------------|--------------------|---------------|
| O&M Index: | 2.34 | O&M Quick: | 4239 | O&M Rating: | 89.00 |
| Structural Index: | 3.00 | Structural Quick: | 3500 | Structural Rating: | 15.00 |
| Overall Index: | 2.42 | Overall Quick: | 423A | Overall Rating: | 104.00 |

| | Position | Code | Observation | Video (sec) | Grade |
|------------------|----------|-----------|--------------------------------|-------------|-------|
| M-804-030 | | | | | |
| | .0 | AMH | Manhole | 13 | NA |
| | .0 | MWL | Water Level | 48 | NA |
| | 13.6 | IW(S01) | Infil Weeper | 119 | M 2 |
| | 20.1 | MWLS(S02) | Water Level Sag | 140 | S 3 |
| | 35.0 | MWLS(F02) | Water Level Sag | 280 | S 3 |
| | 39.9 | MWL | Water Level | 299 | NA |
| | 40.3 | IW(F01) | Infil Weeper | 310 | M 2 |
| | 51.1 | IR | Infil Runner | 340 | M 4 |
| | 63.5 | IW(S03) | Infil Weeper | 419 | M 2 |
| | 67.4 | MWLS(S04) | Water Level Sag | 440 | S 3 |
| | 73.1 | TFD | Tap Factory Defective | 486 | M 2 |
| | 73.1 | DAE | Deposits Attached Encrustation | 534 | M 2 |
| | 76.2 | TFD | Tap Factory Defective | 608 | M 2 |
| | 76.7 | MWLS(F04) | Water Level Sag | 655 | S 3 |
| | 76.7 | MWL | Water Level | 689 | NA |
| | 89.3 | TBD | Tap Break-in Defective | 750 | M 3 |
| | 89.3 | DAE | Deposits Attached Encrustation | 788 | M 2 |
| | 102.3 | MWL | Water Level | 808 | NA |
| | 121.6 | IR | Infil Runner | 873 | M 4 |
| | 138.1 | RMJ(S05) | Roots Medium Joint | 951 | M 3 |
| | 152.4 | RMJ(F05) | Roots Medium Joint | 984 | M 3 |
| | 152.4 | IW(F03) | Infil Weeper | 999 | M 2 |
| | 152.4 | AMH | Manhole | 1043 | NA |
| M-804-033 | | | | | |

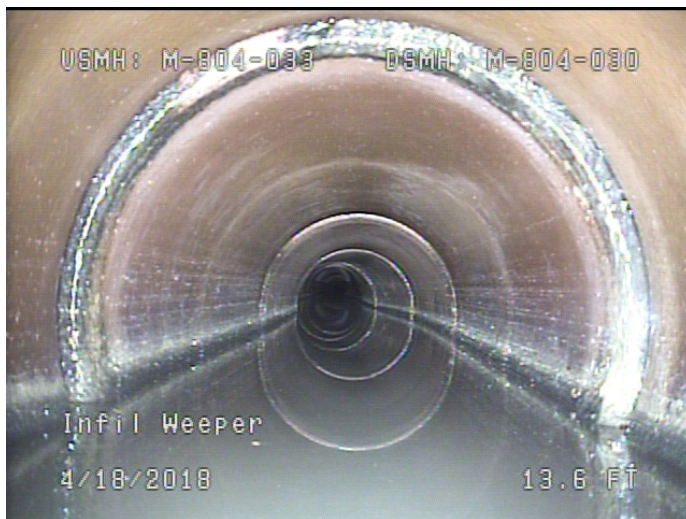


Code: **AMH**
Description: **Manhole**

Distance (ft): **.0**
Structural Grade: **0**
O&M Grade: **0**
Clock Start/From:
Clock To:
1st Value:
2nd Value:
Value Percent:
Continuous Index:
Within 8" of Joint: **NO**
Remarks: **M-804-030**



| | |
|---------------------|--------------------|
| Code: | MWL |
| Description: | Water Level |
| Distance (ft): | .0 |
| Structural Grade: | 0 |
| O&M Grade: | 0 |
| Clock Start/From: | |
| Clock To: | |
| 1st Value: | |
| 2nd Value: | |
| Value Percent: | 15.000 |
| Continuous Index: | |
| Within 8" of Joint: | NO |
| Remarks: | |



| | |
|---------------------|---------------------|
| Code: | IW |
| Description: | Infil Weeper |
| Distance (ft): | 13.6 |
| Structural Grade: | 0 |
| O&M Grade: | 2 |
| Clock Start/From: | 12 |
| Clock To: | 12 |
| 1st Value: | |
| 2nd Value: | |
| Value Percent: | |
| Continuous Index: | S01 |
| Within 8" of Joint: | YES |
| Remarks: | |



| | |
|---------------------|------------------------|
| Code: | MWLS |
| Description: | Water Level Sag |
| Distance (ft): | 20.1 |
| Structural Grade: | 3 |
| O&M Grade: | 3 |
| Clock Start/From: | |
| Clock To: | |
| 1st Value: | |
| 2nd Value: | |
| Value Percent: | 35.000 |
| Continuous Index: | S02 |
| Within 8" of Joint: | NO |
| Remarks: | |



| | |
|---------------------|------------------------|
| Code: | MWLS |
| Description: | Water Level Sag |
| Distance (ft): | 35.0 |
| Structural Grade: | 3 |
| O&M Grade: | 3 |
| Clock Start/From: | |
| Clock To: | |
| 1st Value: | |
| 2nd Value: | |
| Value Percent: | 35.000 |
| Continuous Index: | F02 |
| Within 8" of Joint: | NO |
| Remarks: | |



| | |
|---------------------|--------------------|
| Code: | MWL |
| Description: | Water Level |
| Distance (ft): | 39.9 |
| Structural Grade: | 0 |
| O&M Grade: | 0 |
| Clock Start/From: | |
| Clock To: | |
| 1st Value: | |
| 2nd Value: | |
| Value Percent: | 10.000 |
| Continuous Index: | |
| Within 8" of Joint: | NO |
| Remarks: | |



| | |
|---------------------|---------------------|
| Code: | IW |
| Description: | Infil Weeper |
| Distance (ft): | 40.3 |
| Structural Grade: | 0 |
| O&M Grade: | 2 |
| Clock Start/From: | 12 |
| Clock To: | 12 |
| 1st Value: | |
| 2nd Value: | |
| Value Percent: | |
| Continuous Index: | F01 |
| Within 8" of Joint: | YES |
| Remarks: | |



Code: **IR**
 Description: **Infil Runner**

Distance (ft): **51.1**
 Structural Grade: **0**
 O&M Grade: **4**
 Clock Start/From: **9**
 Clock To:
 1st Value:
 2nd Value:
 Value Percent:
 Continuous Index:
 Within 8" of Joint: **YES**
 Remarks:



Code: **IW**
 Description: **Infil Weeper**

Distance (ft): **63.5**
 Structural Grade: **0**
 O&M Grade: **2**
 Clock Start/From: **3**
 Clock To: **8**
 1st Value:
 2nd Value:
 Value Percent:
 Continuous Index: **S03**
 Within 8" of Joint: **YES**
 Remarks:



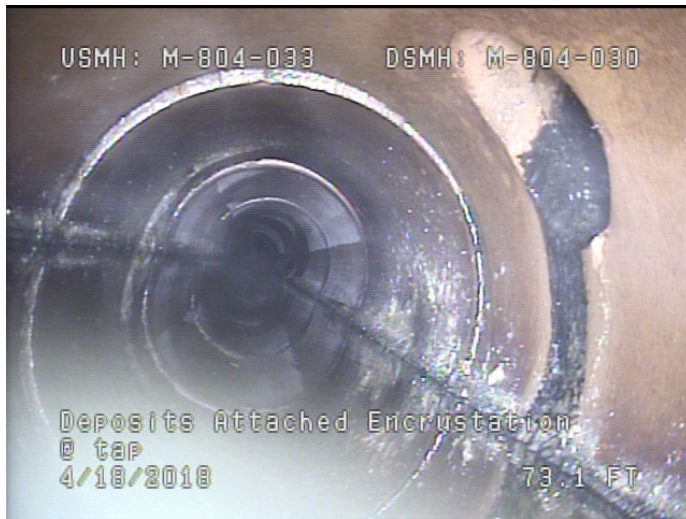
Code: **MWLS**
 Description: **Water Level Sag**

Distance (ft): **67.4**
 Structural Grade: **3**
 O&M Grade: **3**
 Clock Start/From:
 Clock To:
 1st Value:
 2nd Value:
 Value Percent: **35.000**
 Continuous Index: **S04**
 Within 8" of Joint: **NO**
 Remarks:



Code: **TFD**
 Description: **Tap Factory Defective**

Distance (ft): **73.1**
 Structural Grade: **0**
 O&M Grade: **2**
 Clock Start/From: **1**
 Clock To:
 1st Value: **4.000**
 2nd Value:
 Value Percent:
 Continuous Index:
 Within 8" of Joint: **NO**
 Remarks: **Defective**



| | |
|---------------------|---------------------------------------|
| Code: | DAE |
| Description: | Deposits Attached Encrustation |
| Distance (ft): | 73.1 |
| Structural Grade: | 0 |
| O&M Grade: | 2 |
| Clock Start/From: | 2 |
| Clock To: | 5 |
| 1st Value: | |
| 2nd Value: | |
| Value Percent: | 5.000 |
| Continuous Index: | |
| Within 8" of Joint: | NO |
| Remarks: | @ tap |



| | |
|---------------------|------------------------------|
| Code: | TFD |
| Description: | Tap Factory Defective |
| Distance (ft): | 76.2 |
| Structural Grade: | 0 |
| O&M Grade: | 2 |
| Clock Start/From: | 10 |
| Clock To: | |
| 1st Value: | 4.000 |
| 2nd Value: | |
| Value Percent: | |
| Continuous Index: | |
| Within 8" of Joint: | NO |
| Remarks: | hole in tap |



Code: **MWLS**
 Description: **Water Level Sag**

Distance (ft): **76.7**
 Structural Grade: **3**
 O&M Grade: **3**
 Clock Start/From:
 Clock To:
 1st Value:
 2nd Value:
 Value Percent: **35.000**
 Continuous Index: **F04**
 Within 8" of Joint: **NO**
 Remarks:



Code: **MWL**
 Description: **Water Level**

Distance (ft): **76.7**
 Structural Grade: **0**
 O&M Grade: **0**
 Clock Start/From:
 Clock To:
 1st Value:
 2nd Value:
 Value Percent: **20.000**
 Continuous Index:
 Within 8" of Joint: **NO**
 Remarks:



| | |
|---------------------|-------------------------------|
| Code: | TBD |
| Description: | Tap Break-in Defective |
| Distance (ft): | 89.3 |
| Structural Grade: | 0 |
| O&M Grade: | 3 |
| Clock Start/From: | 2 |
| Clock To: | |
| 1st Value: | 4.000 |
| 2nd Value: | |
| Value Percent: | |
| Continuous Index: | |
| Within 8" of Joint: | NO |
| Remarks: | infil around tap |



| | |
|---------------------|---------------------------------------|
| Code: | DAE |
| Description: | Deposits Attached Encrustation |
| Distance (ft): | 89.3 |
| Structural Grade: | 0 |
| O&M Grade: | 2 |
| Clock Start/From: | 2 |
| Clock To: | 5 |
| 1st Value: | |
| 2nd Value: | |
| Value Percent: | 10.000 |
| Continuous Index: | |
| Within 8" of Joint: | NO |
| Remarks: | |



| | |
|---------------------|--------------------|
| Code: | MWL |
| Description: | Water Level |
| Distance (ft): | 102.3 |
| Structural Grade: | 0 |
| O&M Grade: | 0 |
| Clock Start/From: | |
| Clock To: | |
| 1st Value: | |
| 2nd Value: | |
| Value Percent: | 10.000 |
| Continuous Index: | |
| Within 8" of Joint: | NO |
| Remarks: | |



| | |
|---------------------|---------------------|
| Code: | IR |
| Description: | Infil Runner |
| Distance (ft): | 121.6 |
| Structural Grade: | 0 |
| O&M Grade: | 4 |
| Clock Start/From: | 11 |
| Clock To: | |
| 1st Value: | |
| 2nd Value: | |
| Value Percent: | |
| Continuous Index: | |
| Within 8" of Joint: | YES |
| Remarks: | |



| | |
|---------------------|---------------------------|
| Code: | RMJ |
| Description: | Roots Medium Joint |
| Distance (ft): | 138.1 |
| Structural Grade: | 0 |
| O&M Grade: | 3 |
| Clock Start/From: | 7 |
| Clock To: | 5 |
| 1st Value: | |
| 2nd Value: | |
| Value Percent: | 15.000 |
| Continuous Index: | S05 |
| Within 8" of Joint: | YES |
| Remarks: | |



| | |
|---------------------|---------------------------|
| Code: | RMJ |
| Description: | Roots Medium Joint |
| Distance (ft): | 152.4 |
| Structural Grade: | 0 |
| O&M Grade: | 3 |
| Clock Start/From: | 7 |
| Clock To: | 5 |
| 1st Value: | |
| 2nd Value: | |
| Value Percent: | 15.000 |
| Continuous Index: | F05 |
| Within 8" of Joint: | YES |
| Remarks: | |



Code: **IW**
 Description: **Infil Weeper**

Distance (ft): **152.4**
 Structural Grade: **0**
 O&M Grade: **2**
 Clock Start/From: **3**
 Clock To: **8**
 1st Value:
 2nd Value:
 Value Percent:
 Continuous Index: **F03**
 Within 8" of Joint: **YES**
 Remarks:



Code: **AMH**
 Description: **Manhole**

Distance (ft): **152.4**
 Structural Grade: **0**
 O&M Grade: **0**
 Clock Start/From:
 Clock To:
 1st Value:
 2nd Value:
 Value Percent:
 Continuous Index:
 Within 8" of Joint: **NO**
 Remarks: **M-804-033**