

Profile/Photo Observation Report




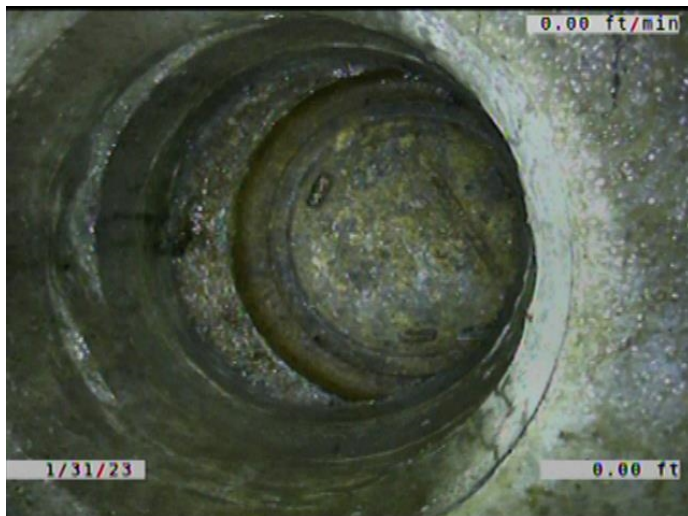
| | | | | | |
|-------------------|-----------------------|-------------|-----------------------|------------|------------------------------|
| Date: | 01/31/2023 | Weather: | | Coding: | PACP 7.0 |
| Pipe Length (ft): | 120.0 | Owner: | City of Hobart | Pre Clean: | Heavy Cleaning |
| P.O.#: | YES502259 | Surveyor: | S. Bucklin | PSR: | M-805-036-M-805-037.1 |
| Customer: | City of Hobart | Clean Date: | 11/30/2022 | Shape: | C |

| | | | |
|-------------|------------------------------|---------------|-----------------------|
| Street: | South Liberty Place | Flow Control: | Not Controlled |
| City: | Hobart, IN | Year Renewed: | |
| Location: | Easement/Right of Way | Tape/Media #: | |
| Purpose: | Routine Assessment | Dia/Height: | 12" |
| Use: | Sanitary Sewage Pipe | Material: | DIP |
| Drain Area: | | Lining: | None |
| Category: | NA | | |
| Comment: | | | |

| | | | |
|-------------------|------------------|-----------------------------|--------------------|
| Location Details: | | Direction of Survey: | Upstream |
| US MH: | M-805-036 | DS MH: | M-805-037.1 |
| | | Total Length Surveyed (ft): | 120.9 |

| | | | | | |
|-------------------|-------------|-------------------|-------------|--------------------|--------------|
| O&M Index: | 2.00 | O&M Quick: | 2B00 | O&M Rating: | 32.00 |
| Structural Index: | 2.13 | Structural Quick: | 512C | Structural Rating: | 51.00 |
| Overall Index: | 2.08 | Overall Quick: | 512F | Overall Rating: | 83.00 |

| | Position | Code | Observation | Video (sec) | Grade |
|--|----------|----------|---------------------------------|-------------|-------|
| M-805-037.1 | | | | | |
|  | .0 | AMH | Manhole | 1 | NA |
| | .0 | MWL | Miscellaneous Water Level | 70 | NA |
| | .0 | SSS(S01) | Surface Damage Surface Spalling | 78 | S 2 |
| | 17.4 | DAR | Deposits Attached Ragging | 163 | M 2 |
| | 42.7 | DAE(S02) | Deposits Attached Encrustation | 271 | M 2 |
| | 115.9 | SSS(F01) | Surface Damage Surface Spalling | 530 | S 2 |
| | 115.9 | DAE(F02) | Deposits Attached Encrustation | 538 | M 2 |
| | 116.5 | MMC | Miscellaneous Material Change | 579 | NA |
| | 116.5 | BVV | Broken Void Visible | 660 | S 5 |
| | 120.9 | AMH | Manhole | 795 | NA |
| M-805-036 | | | | | |



Code: **AMH**
Description: **Manhole**

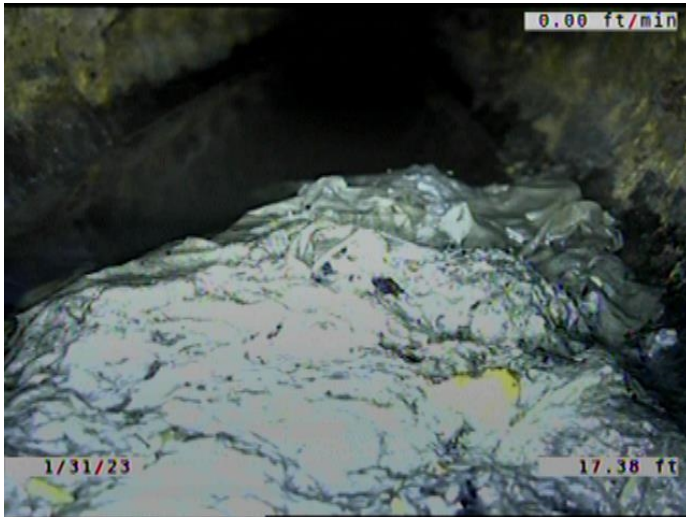
Distance (ft): **.0**
Structural Grade: **0**
O&M Grade: **0**
Clock Start/From:
Clock To:
1st Value:
2nd Value:
Value Percent:
Continuous Index:
Within 8" of Joint: **NO**
Remarks: **M-805-037.1**



| | |
|---------------------|----------------------------------|
| Code: | MWL |
| Description: | Miscellaneous Water Level |
| Distance (ft): | .0 |
| Structural Grade: | 0 |
| O&M Grade: | 0 |
| Clock Start/From: | |
| Clock To: | |
| 1st Value: | |
| 2nd Value: | |
| Value Percent: | 5.000 |
| Continuous Index: | |
| Within 8" of Joint: | NO |
| Remarks: | |



| | |
|---------------------|--|
| Code: | SSS |
| Description: | Surface Damage Surface Spalling |
| Distance (ft): | .0 |
| Structural Grade: | 2 |
| O&M Grade: | 0 |
| Clock Start/From: | 7 |
| Clock To: | 5 |
| 1st Value: | |
| 2nd Value: | |
| Value Percent: | |
| Continuous Index: | S01 |
| Within 8" of Joint: | YES |
| Remarks: | |



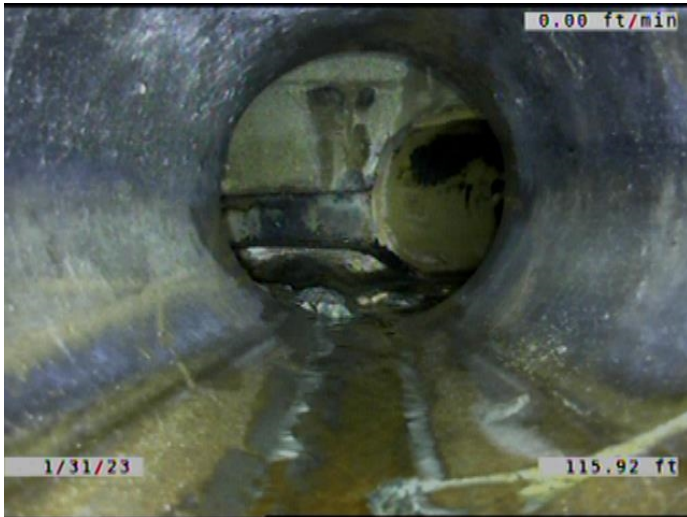
Code: **DAR**
 Description: **Deposits Attached Ragging**

Distance (ft): **17.4**
 Structural Grade: **0**
 O&M Grade: **2**
 Clock Start/From: **5**
 Clock To: **7**
 1st Value:
 2nd Value:
 Value Percent: **5.000**
 Continuous Index:
 Within 8" of Joint: **NO**
 Remarks:



Code: **DAE**
 Description: **Deposits Attached Encrustation**

Distance (ft): **42.7**
 Structural Grade: **0**
 O&M Grade: **2**
 Clock Start/From: **8**
 Clock To: **4**
 1st Value:
 2nd Value:
 Value Percent: **5.000**
 Continuous Index: **S02**
 Within 8" of Joint: **YES**
 Remarks:



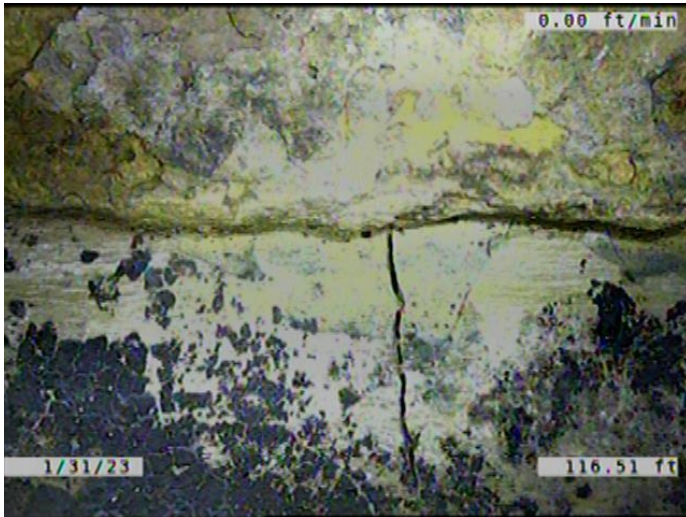
Code: **SSS**
Description: **Surface Damage Surface Spalling**

Distance (ft): **115.9**
Structural Grade: **2**
O&M Grade: **0**
Clock Start/From: **7**
Clock To: **5**
1st Value:
2nd Value:
Value Percent:
Continuous Index: **F01**
Within 8" of Joint: **YES**
Remarks:



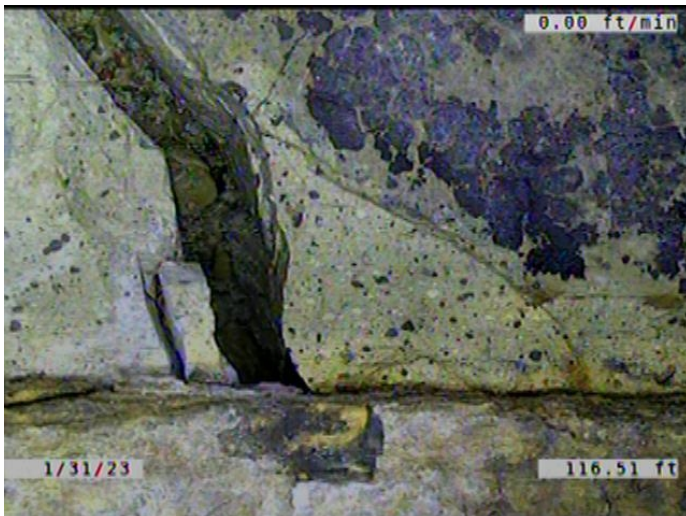
Code: **DAE**
Description: **Deposits Attached Encrustation**

Distance (ft): **115.9**
Structural Grade: **0**
O&M Grade: **2**
Clock Start/From: **8**
Clock To: **4**
1st Value:
2nd Value:
Value Percent: **5.000**
Continuous Index: **F02**
Within 8" of Joint: **YES**
Remarks:



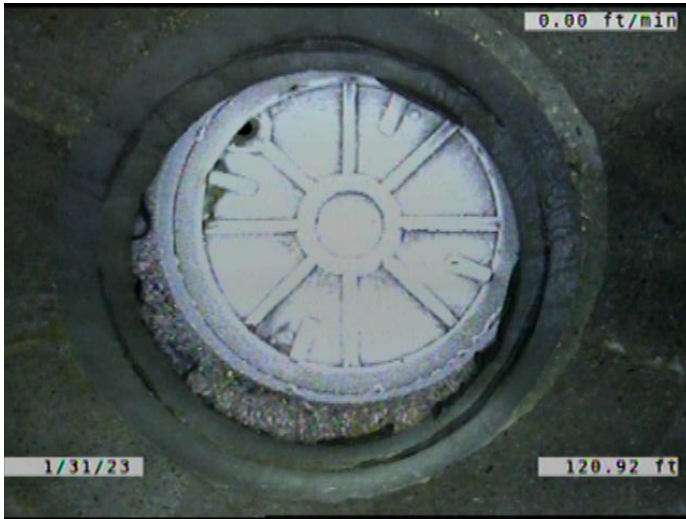
Code: **MMC**
 Description: **Miscellaneous Material Change**

Distance (ft): **116.5**
 Structural Grade: **0**
 O&M Grade: **0**
 Clock Start/From:
 Clock To:
 1st Value:
 2nd Value:
 Value Percent:
 Continuous Index:
 Within 8" of Joint: **NO**
 Remarks: **DIP TO VCP**



Code: **BVV**
 Description: **Broken Void Visible**

Distance (ft): **116.5**
 Structural Grade: **5**
 O&M Grade: **0**
 Clock Start/From: **12**
 Clock To: **8**
 1st Value:
 2nd Value:
 Value Percent:
 Continuous Index:
 Within 8" of Joint: **YES**
 Remarks:



| | |
|---------------------|------------------|
| Code: | AMH |
| Description: | Manhole |
| Distance (ft): | 120.9 |
| Structural Grade: | 0 |
| O&M Grade: | 0 |
| Clock Start/From: | |
| Clock To: | |
| 1st Value: | |
| 2nd Value: | |
| Value Percent: | |
| Continuous Index: | |
| Within 8" of Joint: | NO |
| Remarks: | M-805-036 |