

Profile/Photo Observation Report





Date:	03/23/2018	Weather:		Coding:	PACP 6.0
Pipe Length (ft):	80.6	Owner:	NA	Pre Clean:	Not Known
P.O.#:		Surveyor:	Jen Costello	PSR:	P-809-048-049
Customer:		Clean Date:	01/01/1900	Shape:	C

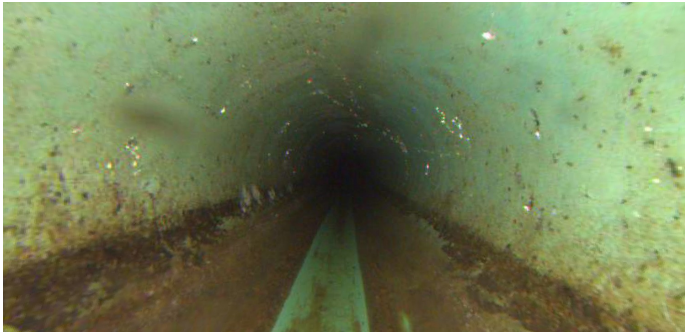
Street:	TANAGER ST	Flow Control:	Not Controlled
City:	Hobart, IN	Year Renewed:	
Location:	Ditch	Tape/Media #:	
Purpose:	Maintenance Related	Dia/Height:	8"
Use:	Sanitary	Material:	PVC
Drain Area:	NA	Lining:	
Category:	NA		
Comment:			

Location Details:		Direction of Survey:	Downstream
US MH:	M-809-048	DS MH:	M-809-049
		Total Length Surveyed (ft):	80.1

O&M Index:	0.00	O&M Quick:	0000	O&M Rating:	0.00
Structural Index:	0.00	Structural Quick:	0000	Structural Rating:	0.00
Overall Index:	0.00	Overall Quick:	0000	Overall Rating:	0.00

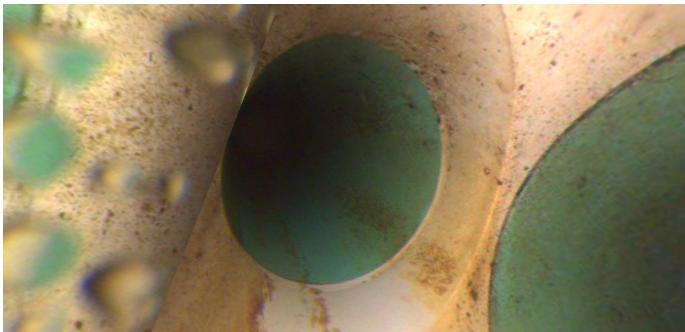
	Position	Code	Observation	Video (sec)	Grade
					
	.0	AMH	Manhole	10	NA
	.0	MWL	Water Level	21	NA
	58.5	TF	Tap Factory	151	NA
	80.1	AMH	Manhole	207	NA
<div> <div> <div>Code:</div> <div>AMH</div> </div> <div> <div>Description:</div> <div>Manhole</div> </div> </div> <div>  <div> <div>Distance (ft):</div> <div>.0</div> </div> <div> <div>Structural Grade:</div> <div>0</div> </div> <div> <div>O&M Grade:</div> <div>0</div> </div> <div> <div>Clock Start/From:</div> <div></div> </div> <div> <div>Clock To:</div> <div></div> </div> <div> <div>1st Value:</div> <div></div> </div> <div> <div>2nd Value:</div> <div></div> </div> <div> <div>Value Percent:</div> <div></div> </div> <div> <div>Continuous Index:</div> <div></div> </div> <div> <div>Within 8" of Joint:</div> <div>NO</div> </div> <div> <div>Remarks:</div> <div>M-809-048</div> </div> </div>					

Code:	MWL
Description:	Water Level

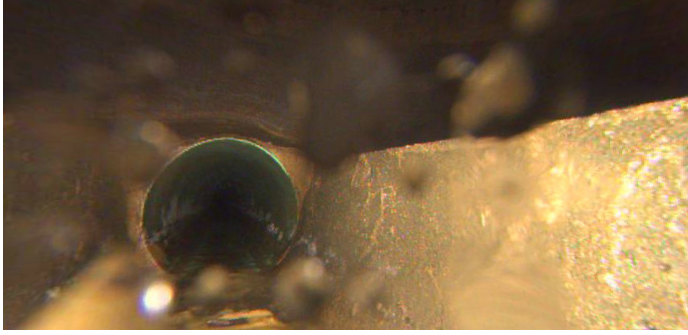


Distance (ft):	.0
Structural Grade:	0
O&M Grade:	0
Clock Start/From:	
Clock To:	
1st Value:	
2nd Value:	
Value Percent:	5.000
Continuous Index:	
Within 8" of Joint:	NO
Remarks:	

Code:	TF
Description:	Tap Factory



Distance (ft):	58.5
Structural Grade:	0
O&M Grade:	0
Clock Start/From:	2
Clock To:	
1st Value:	4.000
2nd Value:	
Value Percent:	
Continuous Index:	
Within 8" of Joint:	
Remarks:	



Code:	AMH
Description:	Manhole
Distance (ft):	80.1
Structural Grade:	0
O&M Grade:	0
Clock Start/From:	
Clock To:	
1st Value:	
2nd Value:	
Value Percent:	
Continuous Index:	
Within 8" of Joint:	NO
Remarks:	M-809-049