

## Profile/Photo Observation Report

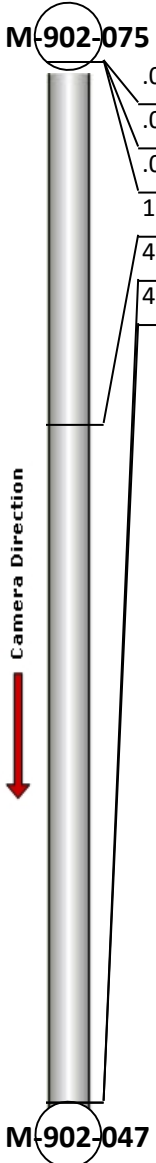


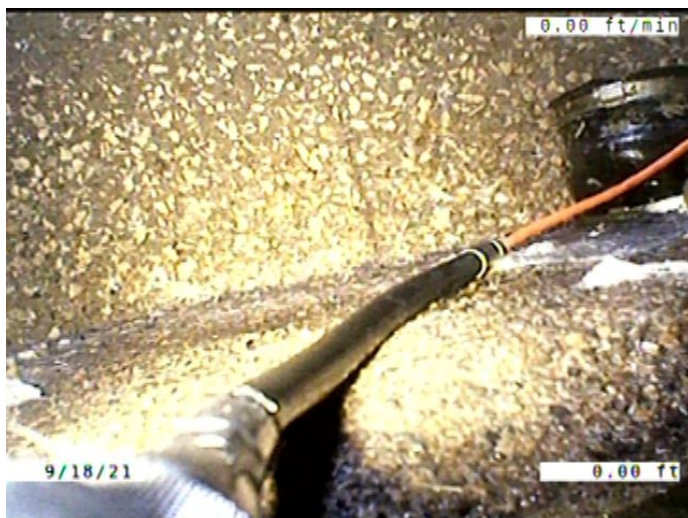
|                   |                       |             |                       |            |                       |
|-------------------|-----------------------|-------------|-----------------------|------------|-----------------------|
| Date:             | <b>09/18/2021</b>     | Weather:    |                       | Coding:    | <b>PACP 7.0</b>       |
| Pipe Length (ft): | <b>332.0</b>          | Owner:      | <b>City of Hobart</b> | Pre Clean: | <b>Light Cleaning</b> |
| P.O.#:            | <b>YES502259</b>      | Surveyor:   | <b>S. Bucklin</b>     | PSR:       | <b>P-902-047-075</b>  |
| Customer:         | <b>City of Hobart</b> | Clean Date: | <b>08/25/2021</b>     | Shape:     | <b>C</b>              |

|             |                             |               |                       |
|-------------|-----------------------------|---------------|-----------------------|
| Street:     | <b>East Ridge Road</b>      | Flow Control: | <b>Not Controlled</b> |
| City:       | <b>Hobart, IN</b>           | Year Renewed: |                       |
| Location:   | <b>Yard</b>                 | Tape/Media #: |                       |
| Purpose:    | <b>Routine Assessment</b>   | Dia/Height:   | <b>6"</b>             |
| Use:        | <b>Sanitary Sewage Pipe</b> | Material:     | <b>PVC</b>            |
| Drain Area: |                             | Lining:       | <b>None</b>           |
| Category:   | <b>NA</b>                   |               |                       |
| Comment:    |                             |               |                       |

|                   |                  |                             |                   |
|-------------------|------------------|-----------------------------|-------------------|
| Location Details: |                  | Direction of Survey:        | <b>Downstream</b> |
| US MH:            | <b>M-902-075</b> | DS MH:                      | <b>M-902-047</b>  |
|                   |                  | Total Length Surveyed (ft): | <b>4.3</b>        |

|                   |             |                   |             |                    |             |
|-------------------|-------------|-------------------|-------------|--------------------|-------------|
| O&M Index:        | <b>2.00</b> | O&M Quick:        | <b>2100</b> | O&M Rating:        | <b>2.00</b> |
| Structural Index: | <b>0.00</b> | Structural Quick: | <b>0000</b> | Structural Rating: | <b>0.00</b> |
| Overall Index:    | <b>2.00</b> | Overall Quick:    | <b>2100</b> | Overall Rating:    | <b>2.00</b> |

|  | Position | Code     | Observation                       | Video (sec) | Grade |
|--|----------|----------|-----------------------------------|-------------|-------|
|  | .0       | AMH      | Manhole                           | 1           | NA    |
|  | .0       | MWL      | Miscellaneous Water Level         | 11          | NA    |
|  | .0       | DSF(S01) | Deposits Settled Fine             | 19          | M 2   |
|  | 1.5      | MGO      | Miscellaneous General Observation | 26          | NA    |
|  | 4.3      | DSF(F01) | Deposits Settled Fine             | 77          | M 2   |
|  | 4.3      | MSA      | Miscellaneous Survey Abandoned    | 85          | NA    |
|  |          |          |                                   |             |       |



Code: **AMH**  
Description: **Manhole**

Distance (ft): **.0**  
Structural Grade: **0**  
O&M Grade: **0**  
Clock Start/From:  
Clock To:  
1st Value:  
2nd Value:  
Value Percent:  
Continuous Index:  
Within 8" of Joint: **NO**  
Remarks: **M-902-075**



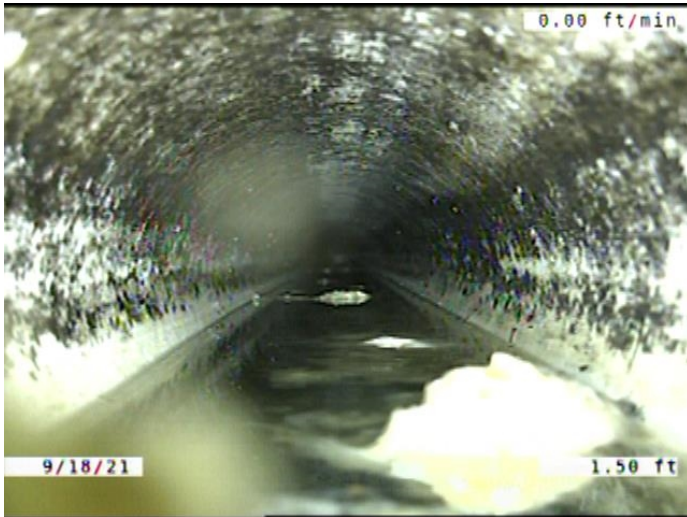
Code: **MWL**  
Description: **Miscellaneous Water Level**

Distance (ft): **.0**  
Structural Grade: **0**  
O&M Grade: **0**  
Clock Start/From:  
Clock To:  
1st Value:  
2nd Value:  
Value Percent: **10.000**  
Continuous Index:  
Within 8" of Joint: **NO**  
Remarks:

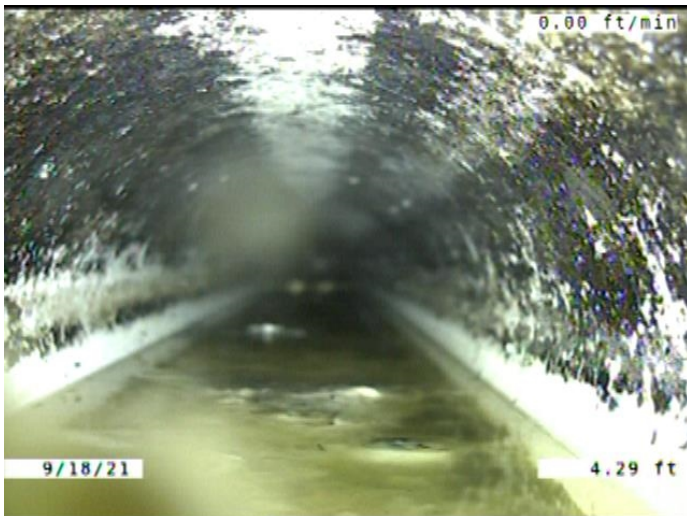


Code: **DSF**  
Description: **Deposits Settled Fine**

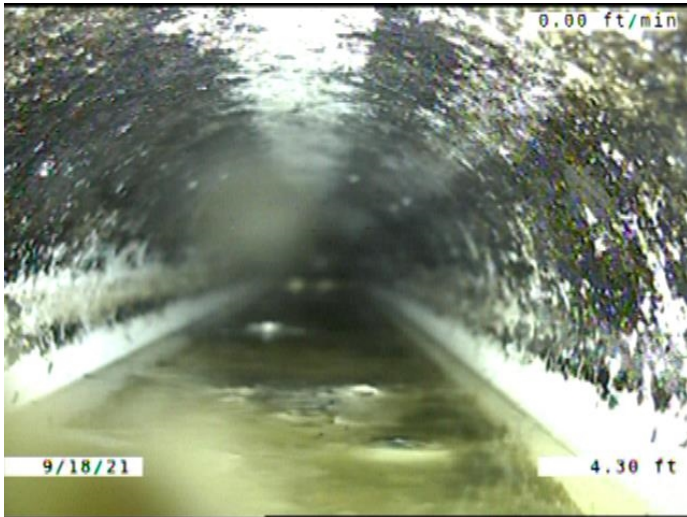
Distance (ft): **.0**  
Structural Grade: **0**  
O&M Grade: **2**  
Clock Start/From: **5**  
Clock To: **7**  
1st Value:  
2nd Value:  
Value Percent: **5.000**  
Continuous Index: **S01**  
Within 8" of Joint: **YES**  
Remarks:



|                     |   |
|---------------------|---|
| Code:               | <b>MGO</b>  |
| Description:        | <b>Miscellaneous General Observation</b>                          |
| Distance (ft):      | <b>1.5</b>  |
| Structural Grade:   | <b>0</b>  |
| O&M Grade:          | <b>0</b>  |
| Clock Start/From:   |   |
| Clock To:           |   |
| 1st Value:          |   |
| 2nd Value:          |   |
| Value Percent:      |   |
| Continuous Index:   |   |
| Within 8" of Joint: | <b>NO</b>   |
| Remarks:            | <b>TIGHT ACCESS IN THE MANHOLE.<br/>HAD TO START IN THE PIPE.</b> |



|                     |                              |
|---------------------|------------------------------|
| Code:               | <b>DSF</b>                   |
| Description:        | <b>Deposits Settled Fine</b> |
| Distance (ft):      | <b>4.3</b>                   |
| Structural Grade:   | <b>0</b>                     |
| O&M Grade:          | <b>2</b>                     |
| Clock Start/From:   | <b>5</b>                     |
| Clock To:           | <b>7</b>                     |
| 1st Value:          |                              |
| 2nd Value:          |                              |
| Value Percent:      | <b>5.000</b>                 |
| Continuous Index:   | <b>F01</b>                   |
| Within 8" of Joint: | <b>YES</b>                   |
| Remarks:            |                              |



|                     |   |
|---------------------|---|
| Code:               | <b>MSA</b>                              |
| Description:        | <b>Miscellaneous Survey Abandoned</b>   |
| Distance (ft):      | <b>4.3</b>                              |
| Structural Grade:   | <b>0</b>                                |
| O&M Grade:          | <b>0</b>                                |
| Clock Start/From:   |   |
| Clock To:           |   |
| 1st Value:          |   |
| 2nd Value:          |   |
| Value Percent:      |   |
| Continuous Index:   |   |
| Within 8" of Joint: | <b>NO</b>                               |
| Remarks:            | <b>CAMERA CANT MAKE IT PAST DEBRIS.</b> |